

# CORNER RECORD

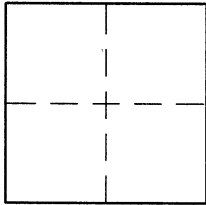
Agency Index 21-127

Document Number 026-132-10

City of CORTE MADERA

County of MARIN, California

Brief Legal Description LOT 158, MAP OF MARIN ESTATES, 8 MAPS 110



### CORNER TYPE

Government Corner  Control   
Meander  Property   
Rancho  Other

Date of Survey 10/8/2020

### COORDINATES (Optional)

N. \_\_\_\_\_ E. \_\_\_\_\_  
Elevation \_\_\_\_\_  
Units Metric  U.S. Survey Foot   
Horizontal Datum \_\_\_\_\_  
Zone \_\_\_\_\_ Epoch Date \_\_\_\_\_  
Vertical Datum \_\_\_\_\_

Complies with Public Resources Code §§8801-8819

Complies with Public Resources Code §§8890-8902

PLS Act Ref:  8765(d)  8771  8773  Other:

Corner / Monument:  Left as found  Established  Rebuilt  Pre-Construction  
 Found and tagged  Reestablished  Referenced  Post-Construction

Narrative of corner identified and monument as found, set, reset, replaced, or removed:

See sheet #2 for description (s):

### SURVEYOR'S STATEMENT

This Corner Record was prepared by me or under my direction in conformance with the Professional Land Surveyors' Act on 11/10/21

Signed *Dylan M. Gonsalves* P.L.S. or R.C.E. No. 8475



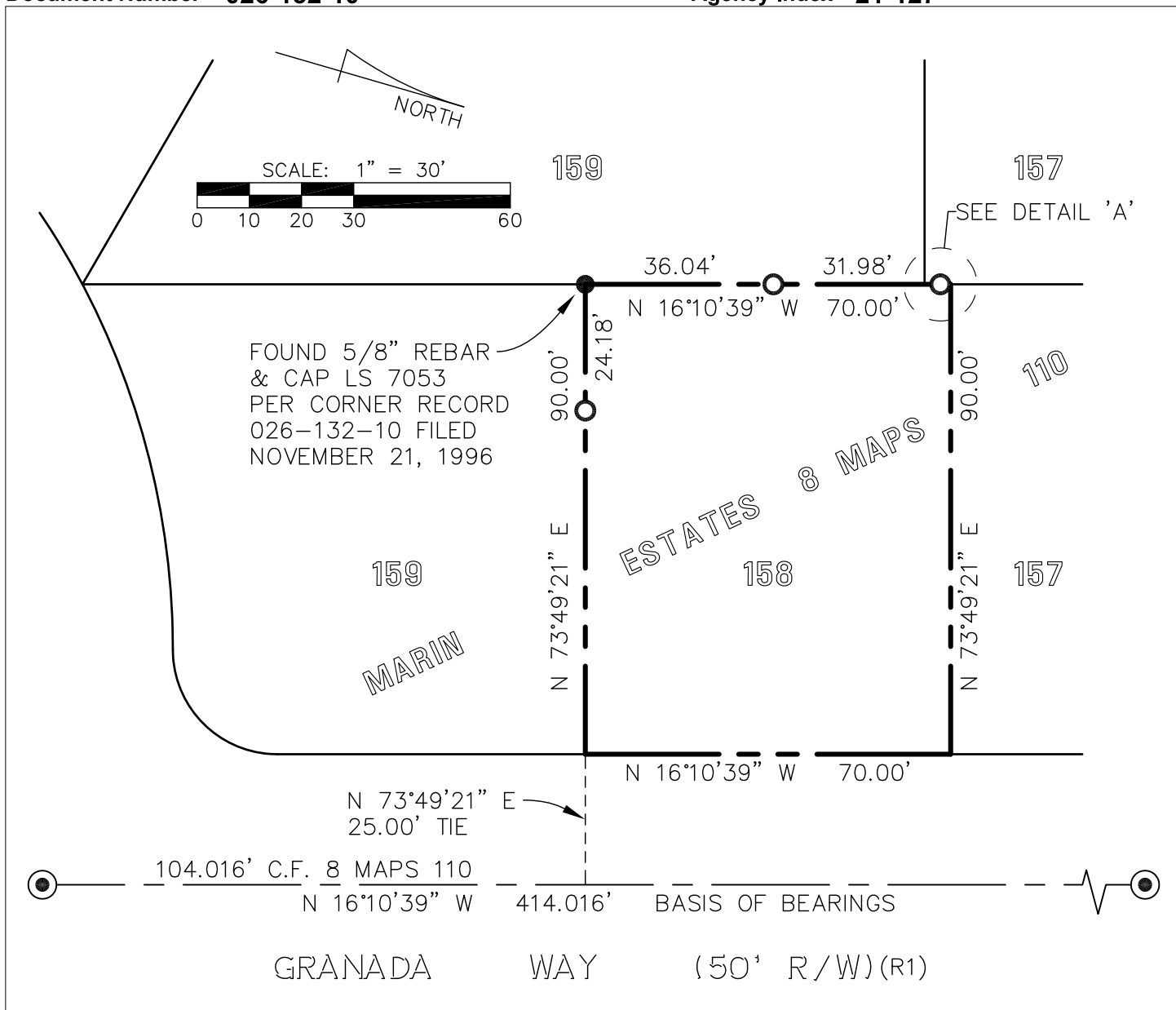
### COUNTY SURVEYOR'S STATEMENT

This Corner Record was received November 10, 2021 and examined and filed November 15, 2021

Signed *T.W. Park* P.L.S. 8176  
Title County Surveyor



County Surveyor's Comment \_\_\_\_\_

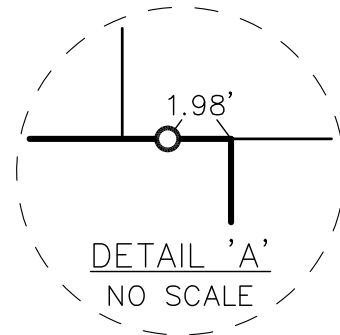


BASIS OF BEARINGS

THE CENTER LINE OF GRANADA WAY, TAKEN AS NORTH 16°10'39" WEST, AS SHOWN ON 8 MAPS 110.

LEGEND

- BOUNDARY
- MONUMENT LINE
- FOUND PIN MONUMENT IN WELL CASING PER 8 MAPS 110
- FOUND REBAR AS NOTED
- SET REBAR & PLASTIC CAP STAMPED "PLS 8475"



**DMG ENGINEERING, INC.**

30 OAKVUE COURT, PLEASANT HILL, CALIF. 94523  
 PHONE (925) 787-0463 • FAX (925) 287-8503

JOB: 20-96 DATE: 11/10/2021