

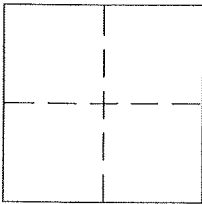
CORNER RECORD

Document Number A.P.N. 026-132-04

City of CORTE MADERA

County of MARIN, California

Brief Legal Description LOT 153 AS SHOWN ON THE "MAP OF MARIN ESTATES"
FILED DECEMBER 15, 1955 IN MAP BOOK 8 AT PAGE 110, MARIN COUNTY RECORDS



CORNER TYPE

Government Corner Control
Meander Property
Rancho Other
Date of Survey 6/3/2015

COORDINATES (Optional)

N. _____
E. _____
Zone _____ NAD27 NAD83
NAD83 Epoch _____
Elev. _____
Vert. Datum: NGVD29 NAVD88
Meas. Units: Metric Imperial

Corner - Left as found Found and tagged Established Reestablished Rebuilt

Identification and type of corner found: Evidence used to identify or procedure used to establish or reestablish the corner:
SEE PAGE 2

A description of the physical condition of the monument as found and as set or reset:
SEE PAGE 2

SURVEYOR'S STATEMENT

This Corner Record was prepared by me or under my direction in conformance with
the Land Surveyor's Act on 1/12 2016

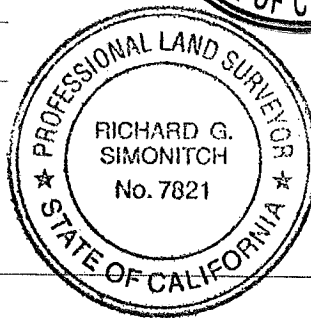
Signed [Signature] P.L.S. or R.C.E. No. 6784



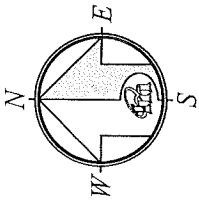
COUNTY SURVEYOR'S STATEMENT

This Corner Record was received JULY 2, 2015
and examined and filed MARCH 14, 2016

Signed [Signature] P.L.S. or R.C.E. No. 7821
Title County Surveyor



County Surveyor's Comment _____



REFERENCE

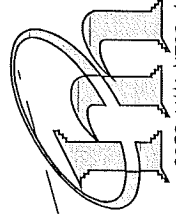
"MAP OF MARIN ESTATES" FILED FOR RECORD IN 1955 IN BOOK 8 OF MAPS, AT PAGE 110, MARIN COUNTY RECORDS.

LEGEND

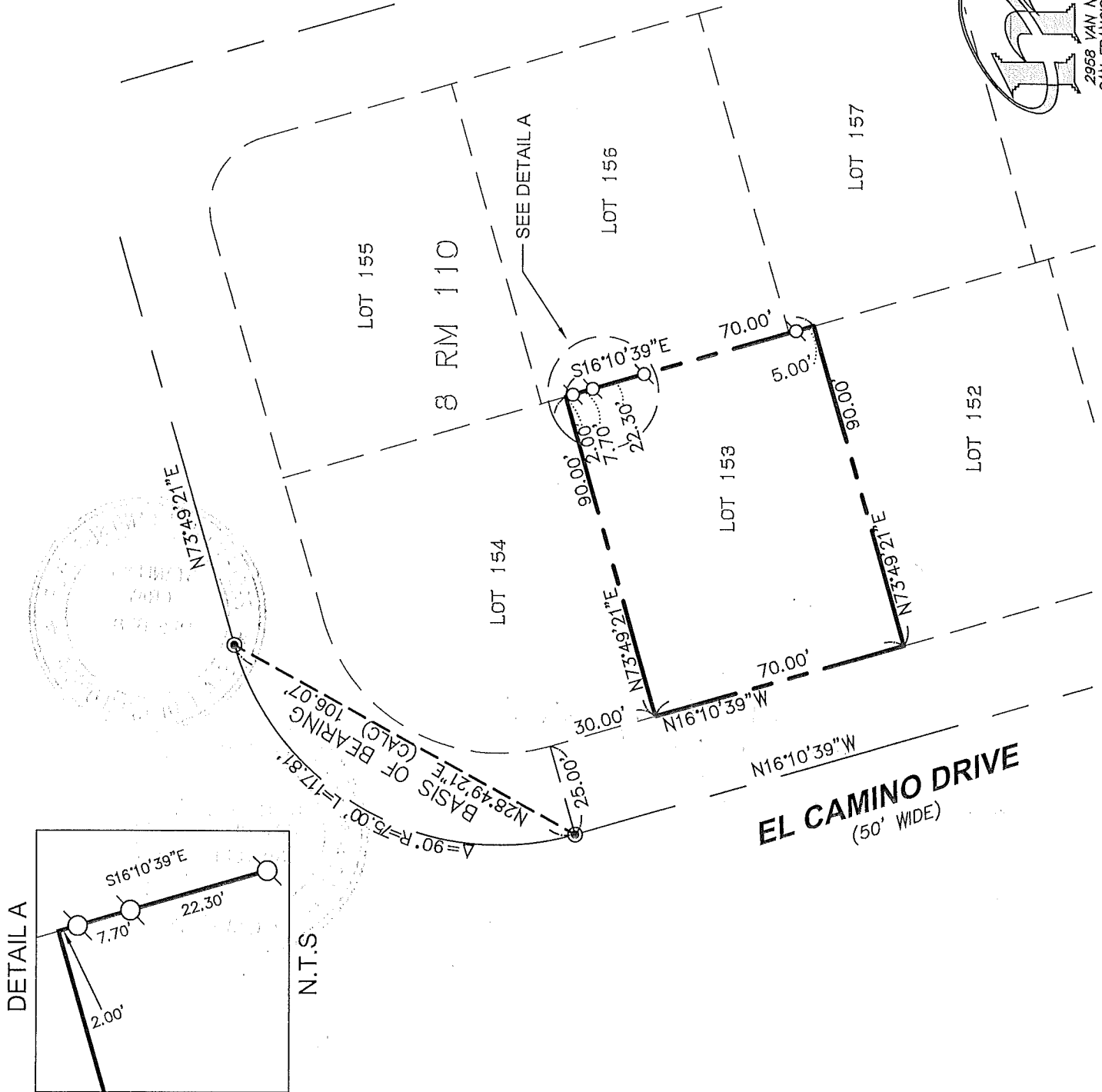
- FOUND STREET MONUMENT
- SET 5/8" REBAR WITH CAP, PLS 6784

NOTE:
RECORD=MEASURED.

CORNER RECORD



MERIDIAN SURVEYING, INC.
 2968 VAN NESS AVENUE (15054) 777 GRAND AVENUE, #202
 SAN FRANCISCO, CA 94109 SAN RAFAEL, CA 94901
 (415) 440-4131 info@meridiansurvey.com (415) 466-5450



DETAIL A

N.T.S.

EL CAMINO DRIVE
(50' WIDE)