

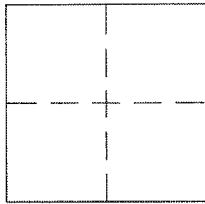
CORNER RECORD

Document Number A.P.N. 026-073-01

City of CORTE MADERA

County of MARIN, California

Brief Legal Description LANDS OF PACIFIC HIGHLANDS DEVELOPMENT CO. AS SHOWN ON THE "MAP OF MARIN ESTABLISHED AND FILED DECEMBER 15, 1955 IN MAP BOOK 8 AT PAGE 110, MARIN COUNTY RECORDS"



CORNER TYPE

Government Corner Control
 Meander Property
 Rancho Other
 Date of Survey 04/16/2014

COORDINATES (Optional)

N. _____
 E. _____
 Zone _____ NAD27 NAD83
 NAD83 Epoch _____
 Elev. _____
 Vert. Datum: NGVD29 NAVD88
 Meas. Units: Metric Imperial

Corner - Left as found Found and tagged Established Reestablished Rebuilt

Identification and type of corner found: Evidence used to identify or procedure used to establish or reestablish the corner:
SEE PAGE 2

A description of the physical condition of the monument as found and as set or reset:
SEE PAGE 2

SURVEYOR'S STATEMENT

This Corner Record was prepared by me or under my direction in conformance with the Land Surveyor's Act on 10/29/15

Signed [Signature] P.L.S. or R.C.E. No. 6784



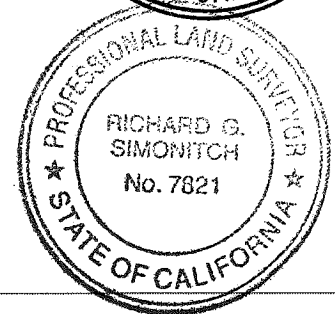
COUNTY SURVEYOR'S STATEMENT

This Corner Record was received JULY 2, 2015

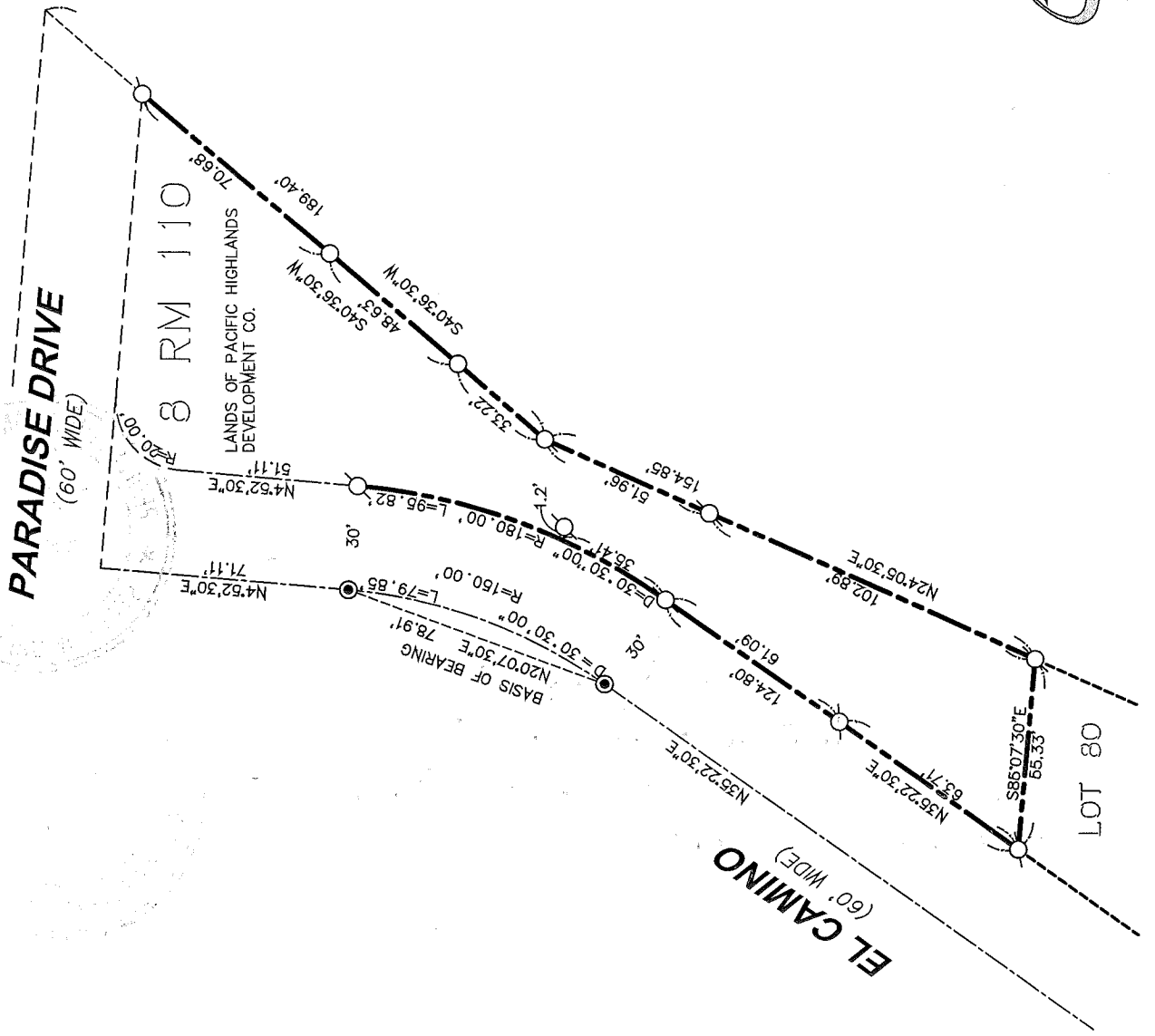
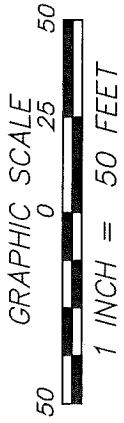
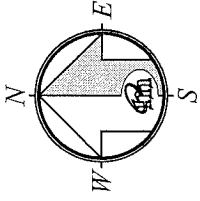
and examined and filed NOVEMBER 25, 2015

Signed [Signature] P.L.S. or R.C.E. No. 7821

Title County Surveyor



County Surveyor's Comment _____



REFERENCE

"MAP OF MARIN ESTATES" FILED FOR RECORD OCTOBER 1955, IN BOOK 8 OF MAPS, AT PAGE 110, MARIN COUNTY RECORDS.

LEGEND

- FOUND STREET MONUMENT
- SET 5/8" REBAR WITH CAP, PLS 6784
- SET N&T, PLS 6784

NOTE:
RECORD=MEASURED.

CORNER RECORD

MERIDIAN SURVEYING
ENGINEERING, INC.

2968 VAN NESS AVENUE (14087) 777 GRAND AVENUE, #202
SAN FRANCISCO, CA 94109 SAN RAFAEL, CA 94901
(415) 440-4131 info@meridiansurvey.com (415) 456-5450