

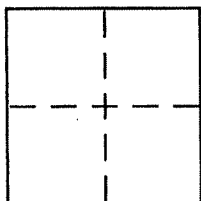
**CORNER RECORD**

Document Number APN 026-053-11

City of Corte Madera

County of Marin, California

Brief Legal Description Lot 5, Block E of 7 RM 27



**CORNER TYPE**

Government Corner  Control   
Meander  Property   
Rancho  Other   
Date of Survey 04-01-11

**COORDINATES (Optional)**

N. \_\_\_\_\_  
E. \_\_\_\_\_  
Zone \_\_\_\_\_ NAD27  NAD83   
NAD83 Epoch \_\_\_\_\_  
Elev. \_\_\_\_\_  
Vert. Datum: NGVD29  NAVD88   
Meas. Units: Metric  Imperial

Corner - Left as found  Found and tagged  Established  Reestablished  Rebuilt

Identification and type of corner found: Evidence used to identify or procedure used to establish or reestablish the corner:

See page 2 of 2

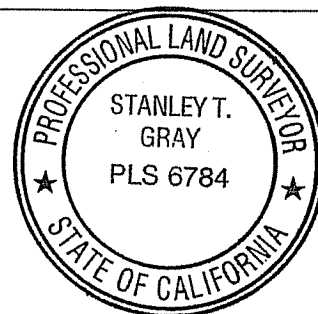
A description of the physical condition of the monument as found and as set or reset:

See page 2 of 2

**SURVEYOR'S STATEMENT**

This Corner Record was prepared by me or under my direction in conformance with the Land Surveyor's Act on 4/4 2011

Signed [Signature] P.L.S. or R.C.E. No. 6784



**COUNTY SURVEYOR'S STATEMENT**

This Corner Record was received APRIL 21, 2011

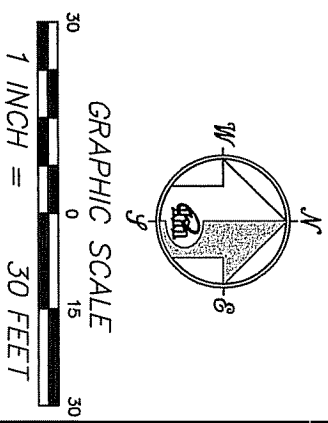
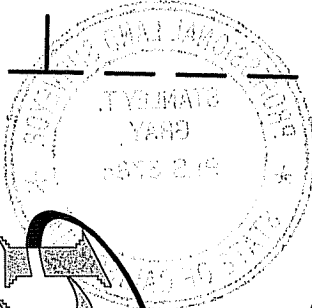
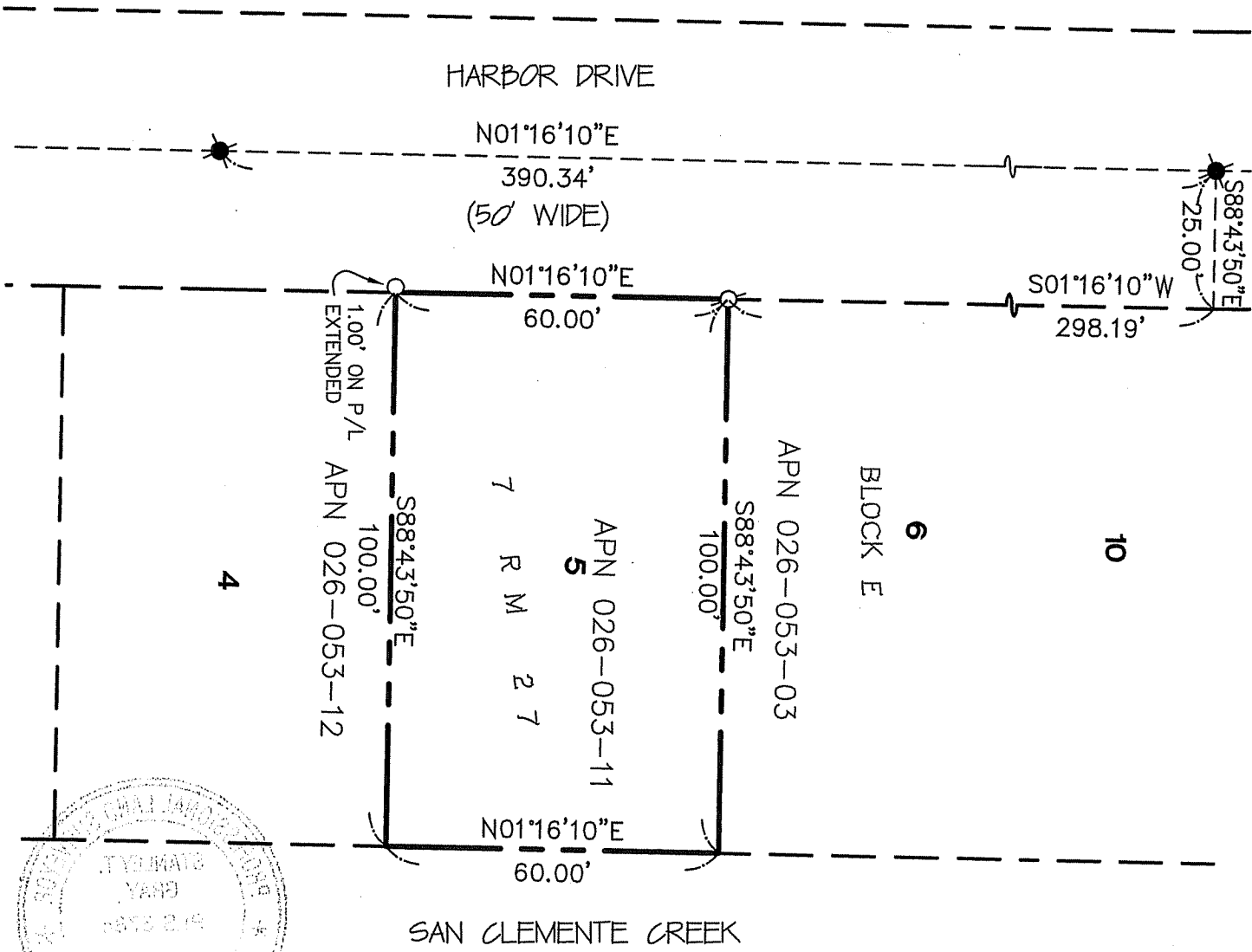
and examined and filed MAY 18, 2011

Signed [Signature] P.L.S. or R.C.E. No. 7128

Title COUNTY SURVEYOR



County Surveyor's Comment \_\_\_\_\_



**REFERENCE**

[A] "MAP OF MARINA VILLAGE UNIT ONE" FILED FOR RECORD FEBRUARY 16, 1951 IN VOLUME 7 OF MAPS, AT PAGE 27, MARIN COUNTY RECORDS.

**LEGEND**

- ⊗ FOUND STREET MONUMENT PER [A]
- ⊗ SET 5/8" REBAR WITH CAP, PLS 6784
- SET LEAD PLUG, BRASS TACK AND TAG, PLS 6784

NOTE  
RECORD=MEASURED

**CORNER RECORD**

**Meridian Surveying**  
 777 GRAND AVENUE, SUITE 202  
 SAN RAFAEL, CA 94901  
 (415) 456-5460

1812 UNION STREET  
 SAN FRANCISCO, CA 94123  
 (415) 440-4131  
 info@meridiansurvey.com