

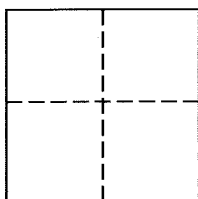
**Lands of Naveh**  
**Job #: 151683**

**CORNER RECORD**

Document Number 026-053-06

Town of Corte Madera in County of Marin, California

Brief Legal Description: Being a Lot 2 in Block E, per "Map of Marina Village Unit One" filed in Volume 7 of Official Records, at Page 27, Marin County Records.



**CORNER TYPE**

- Government Corner  Control   
Meander  Property   
Rancho  Other

Date of Survey August 21, 2015

**COORDINATES (Optional)**

- N \_\_\_\_\_  
E \_\_\_\_\_  
Zone \_\_\_\_\_ NAD27  NAD83   
NAD 83 Epoch \_\_\_\_\_  
Elev. \_\_\_\_\_  
Vert. Datum: NGVD29  NAVD88   
Meas. Units: Metric  Imperial

**Corner -** Left as found  Found and tagged  Established  Reestablished  Rebuilt

Identification and type of corner found: Evidence used to identify or procedure used to establish or reestablish the corner:  
See Page 2 of 2 for additional information

A description of the physical condition of the monument as found and as set or reset:  
See Page 2 of 2 for additional information

**SURVEYOR'S STATEMENT**

This Corner Record was prepared by me or under my direction in conformance with  
The Land Surveyor's Act on August 24, 2015.

Signed [Signature] P.L.S. 6649



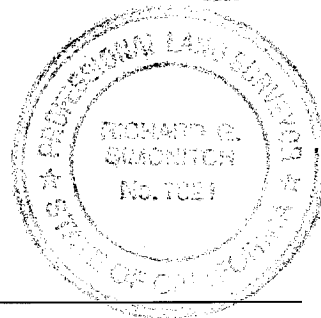
**COUNTY SURVEYOR'S STATEMENT**

This Corner Record was received SEPTEMBER 10, 2015  
and examined and filed DECEMBER 3, 2015

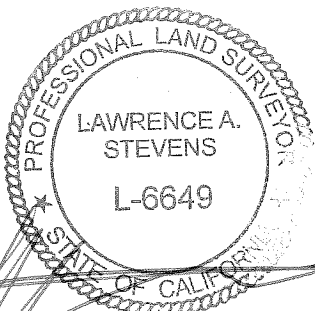
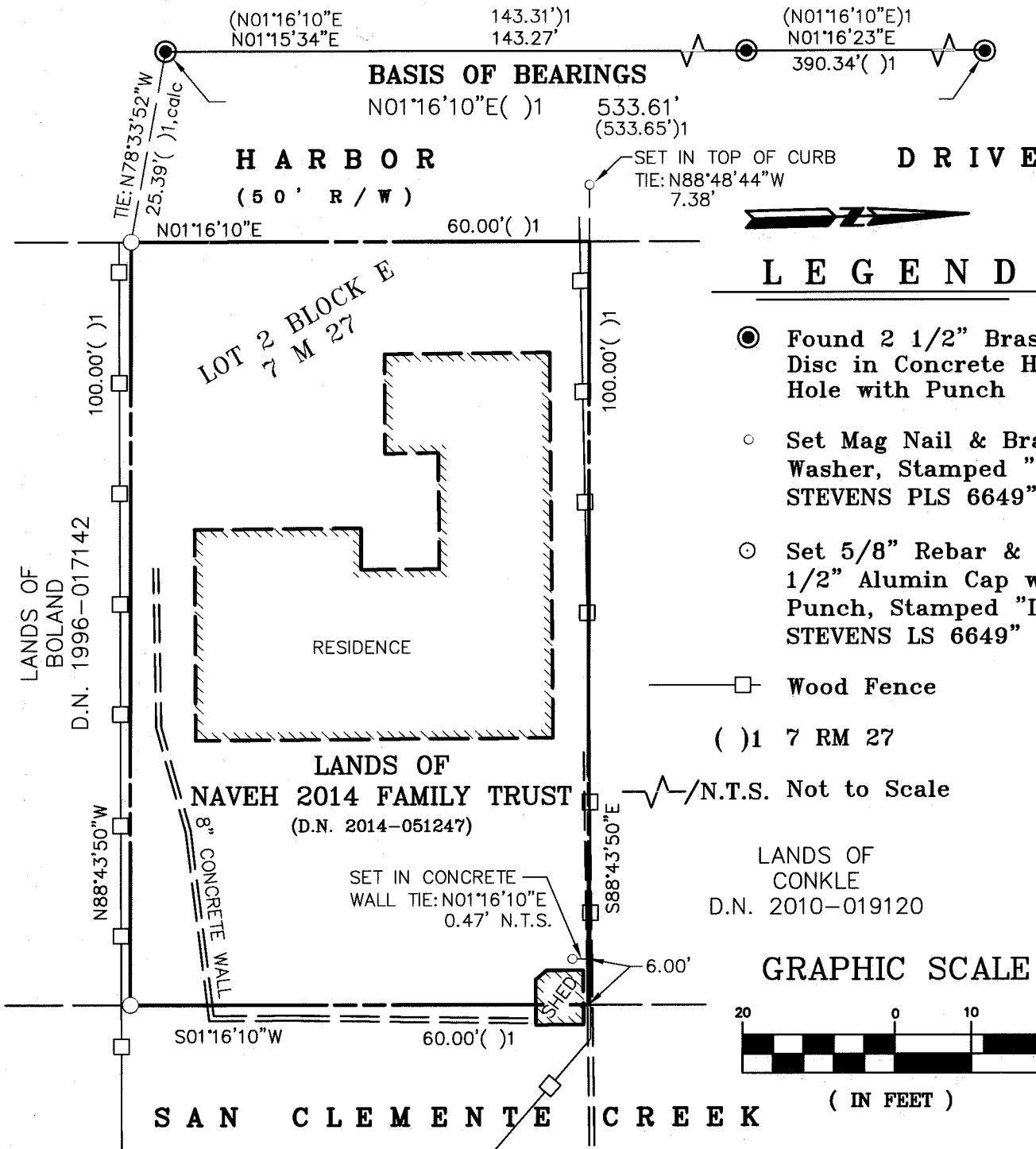
Signed [Signature] P.L.S. or R.C.E. No. 7821

Title County Surveyor

County Surveyors' Comment \_\_\_\_\_



All distances shown are in feet and decimals thereof



**Corner Record  
 Lands of Naveh  
 2014 Family Trust**

(Lot 2, Block E, 7 RM 27)

Corte Madera Marin County California  
 Scale: 1" = 20' August 24, 2015

**L.A. Stevens & Associates, Inc.**

Professional Land Surveyors \* (415) 382-7713  
 7 Commercial Blvd., Suite 1 \* Novato, CA 94949

Job # 15-1683

Page 2 Of 2

Lawrence A. Stevens, PLS 6649

Copyright © Lawrence A. Stevens 2015