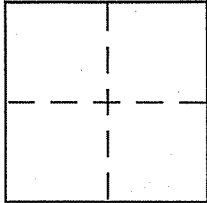


CORNER RECORD

Document Number 025-251-38

City of CORTE MADERA County of _____, California

Brief Legal Description BEING A PORTION OF ^{LOT 10} THE OLNEY TRACT, 6 RM 28, 110S 88



CORNER TYPE

Government Corner Control
Meander Property
Rancho Other
Date of Survey JULY 26, 2006

COORDINATES (Optional)

N. _____
E. _____
Zone _____ NAD27 NAD83
NAD83 Epoch _____
Elev. _____
Vert. Datum: NGVD29 NAVD88
Meas. Units: Metric Imperial

Corner - Left as found Found and tagged Established Reestablished Rebuilt

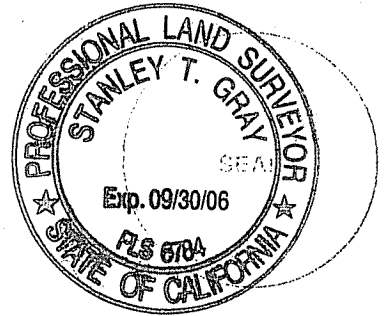
Identification and type of corner found: Evidence used to identify or procedure used to establish or reestablish the corner:
SEE PAGE 2 OF 2

A description of the physical condition of the monument as found and as set or reset:
SEE PAGE 2 OF 2

SURVEYOR'S STATEMENT

This Corner Record was prepared by me or under my direction in conformance with the Land Surveyor's Act on 8/16 2006

Signed [Signature] P.L.S or R.C.E. No. 6784



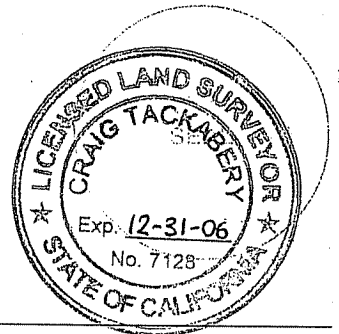
COUNTY SURVEYOR'S STATEMENT

This Corner Record was received 8-25-2006

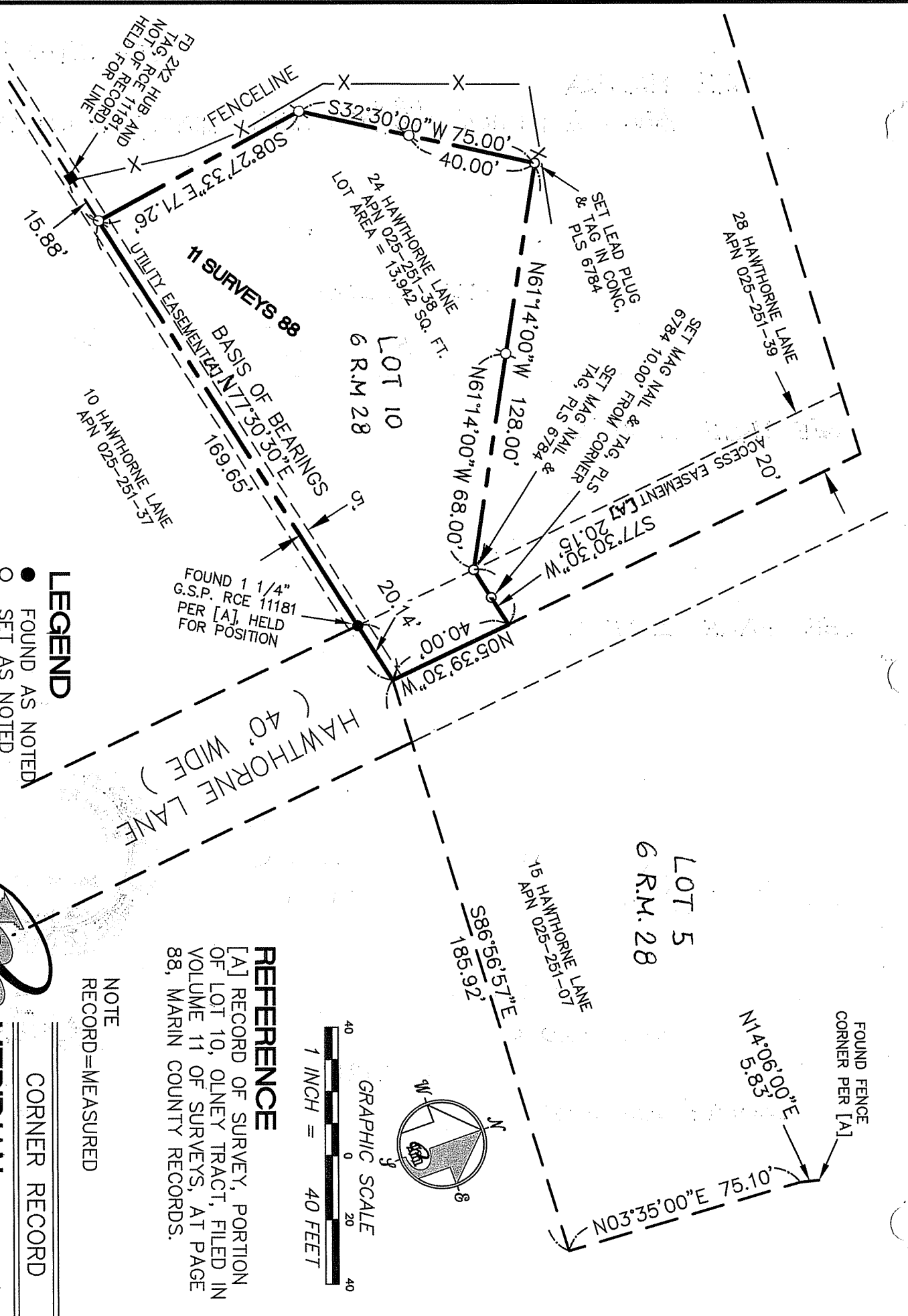
and examined and filed 9-25-2006

Signed [Signature] P.L.S or R.C.E. No. 7128

Title COUNTY SURVEYOR



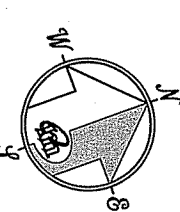
County Surveyor's Comment _____



LEGEND

- FOUND AS NOTED
- SET AS NOTED
- ⊗ SET 5/8" REBAR WITH CAP, PLS 6784
- FOUND AS NOTED
- G.S.P. GALVANIZED STEEL PIPE

NOTE
RECORD=MEASURED



REFERENCE

[A] RECORD OF SURVEY, PORTION OF LOT 10, OLNEY TRACT, FILED IN VOLUME 11 OF SURVEYS, AT PAGE 88, MARIN COUNTY RECORDS.

CORNER RECORD

MERIDIAN SURVEYING
ENGINEERING, INC.

1812 UNION STREET
SAN FRANCISCO, CA 94123
(415) 440-4131 info@meridiansurvey.com

777 GRAND AVENUE, SUITE 202
SAN RAFAEL, CA 94901
(415) 456-5450

06105