

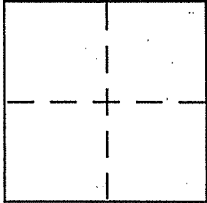
CORNER RECORD

Document Number 025-216-10

City of Corte Madera

County of Marin, California

Brief Legal Description Lot "C" of Book 6 of Parcel Maps, page 81



CORNER TYPE

Government Corner Control
Meander Property
Rancho Other
Date of Survey 12-06-06

COORDINATES (Optional)

N. _____
E. _____
Zone _____ NAD27 NAD83
NAD83 Epoch _____
Elev. _____
Vert. Datum: NGVD29 NAVD88
Meas. Units: Metric Imperial

Corner -- Left as found Found and tagged Established Reestablished Rebuilt

Identification and type of corner found: Evidence used to identify or procedure used to establish or reestablish the corner:

See page 2 of 2

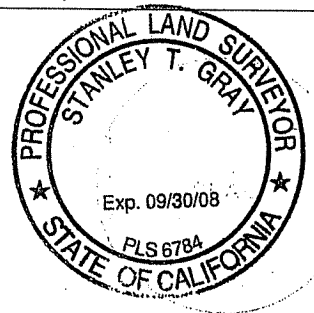
A description of the physical condition of the monument as found and as set or reset:

See page 2 of 2

SURVEYOR'S STATEMENT

This Corner Record was prepared by me or under my direction in conformance with the Land Surveyor's Act on 1/25/07

Signed [Signature] P.L.S or R.C.E. No. 6784



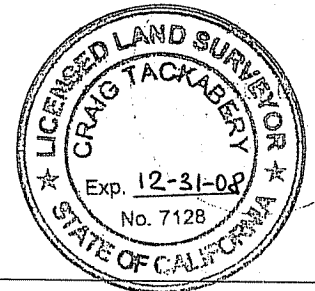
COUNTY SURVEYOR'S STATEMENT

This Corner Record was received JANUARY 29, 2007

and examined and filed FEBRUARY 1, 2007

Signed [Signature] P.L.S or R.C.E. No. 7128

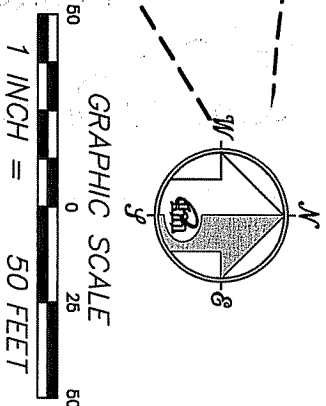
Title COUNTY SURVEYOR



County Surveyor's Comment _____

APN 025-216-12
 EASEMENT FOR SEWER PURPOSES
 PER DOCUMENT RECORDED
 JANUARY 27, 1972 IN BOOK
 2537, PAGE 22, O.R.

5' WIDE EASEMENT FOR
 WATER AND WATER
 PIPELINES PER
 2003-94037
 (PARCEL 4)



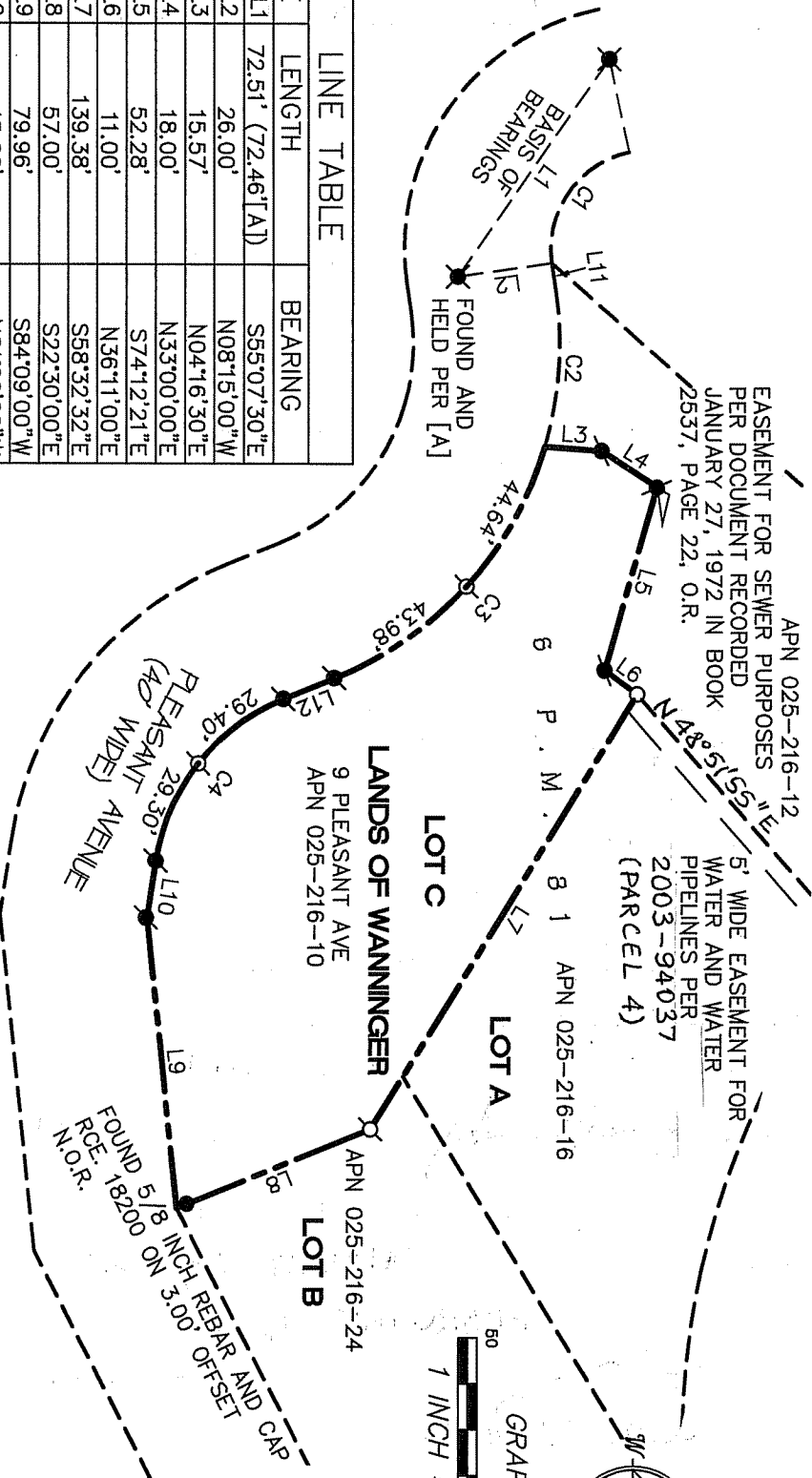
LINE	LENGTH	BEARING
L1	72.51' (72.46[A])	S65°07'30"E
L2	26.00'	N08°15'00"W
L3	15.57'	N04°16'30"E
L4	18.00'	N33°00'00"E
L5	52.28'	S74°12'21"E
L6	11.00'	N36°11'00"E
L7	139.38'	S58°32'32"E
L8	57.00'	S22°30'00"E
L9	79.96'	S84°09'00"W
L10	15.60'	N81°20'00"W
L11	8.00'	S81°45'00"W
L12	15.00'	N22°20'00"W

CURVE	LENGTH	RADIUS	DELTA
C1	40.64	27.00	86°15'00"
C2	42.55	99.00	24°37'32"
C3	88.62	99.00	51°17'28"
C4	58.70	57.00	59°00'00"

LEGEND

- FOUND CITY MONUMENT PER [A]
 - FOUND AS NOTED
 - SET 5/8" REBAR WITH CAP L.S. 6784
 - FOUND 1" I.P WITH TAG RCE. 12510. N.O.R.
 - SET BRASS TAG AND NAIL L.S. 6784
- N.O.R. NOT OF RECORD

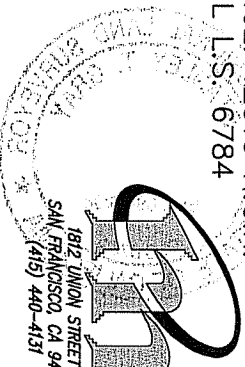
NOTE
 RECORD=MEASURED



REFERENCE

[A] MAP OF RECORD FILED JANUARY
 27th 1972 IN BOOK 6 OF PARCEL
 MAPS AT PAGE 81 MARIN COUNTY
 RECORDS

CORNER RECORD



MERIDIAN SURVEYING ENGINEERING, INC.
 1812 UNION STREET
 SAN FRANCISCO, CA 94123
 (415) 440-4131
 info@meridiansurvey.com
 06163
 777 GRAND AVENUE, SUITE 202
 SAN RAFAEL, CA 94901
 (415) 456-6450