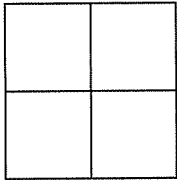


# CORNER RECORD

Document Number APN: 025-216-08

City of CORTE MADERA County of Marin, State of California.

Brief Legal Description: RECORD OF SURVEY OF THE LANDS OF VAN SANT 35 RS 77



**CORNER TYPE:**

Government Corner  Control   
Meander  Property   
Rancho  Other   
Date of Survey March 2010

**COORDINATES:**

[Optional]  
N> \_\_\_\_\_  
E> \_\_\_\_\_  
Zone \_\_\_\_\_ Datum \_\_\_\_\_  
Elev> \_\_\_\_\_

CORNER: ----- Left as found  Found & Tagged  Established  Reestablished  Rebuilt

Identification & Type of Corner Found: Evidence used to identify or procedure used to establish or reestablish the corner:

**FOUND MONUMENTS PER 35-OS 77 AND SET POINTS AS SHOWN ON REVERSE.**

A description of the physical condition of the monument as found and as set or reset:

**Fnd. 5/8" Rebar & Cap in good condition  
Set reference points as shown on reverse.**



**SURVEYOR'S STATEMENT:**

The corner record was prepared by me or under my direction in conformance with the Land Surveyors' Act on MARCH 2010

Signed: Douglas J. Matteson RCE# 18200

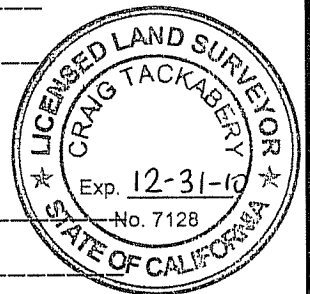
**COUNTY SURVEYORS STATEMENT:**

This corner record was received: MARCH 24, 2010

and filed APRIL 19, 2010

Signed CRAIG TACKABERY

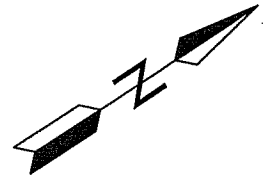
Title: COUNTY SURVEYOR



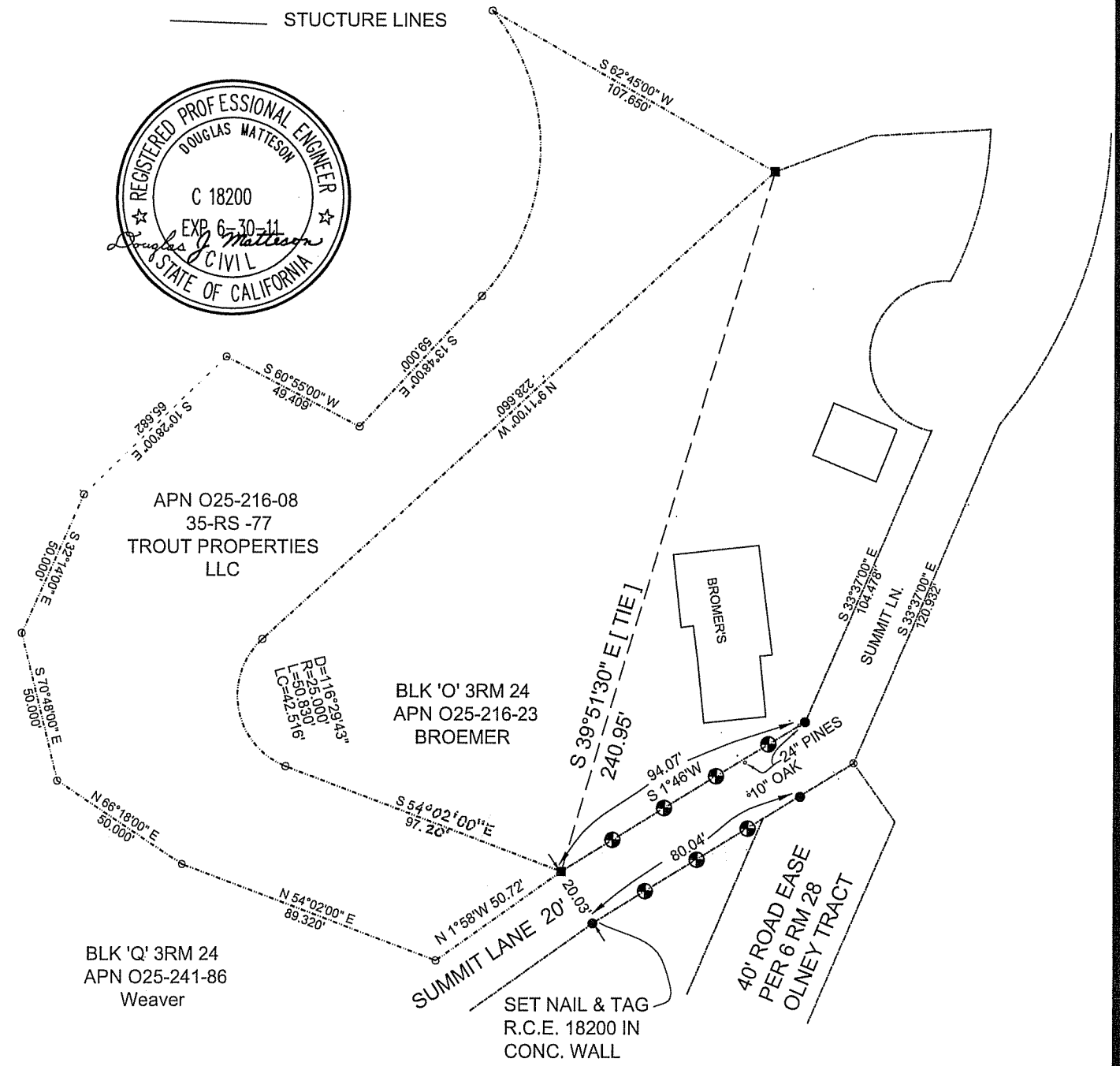
COUNTY SURVEYOR'S COMMENT \_\_\_\_\_

# LEGEND

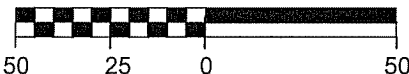
- SET #5 REBAR & CAP R.C.E. 18200 EXCEPT AS NOTED
- FOUND 5/8" Rebar & Cap RCE 18200 per RS 35-077
- ⊕ Set temporary rebar on line.



- SUBJECT PROPERTY LINES
- ADJOINER PROPERTY LINES
- STRUCTURE LINES



GRAPHIC SCALE: 1" = 50'



**DJ MATTESON CIVIL ENGINEER AND SURVEYOR**  
 200 GATE FIVE RD SUITE 210A SAUSALITO, CA  
 5 HERON CT. SAN RAFAEL