

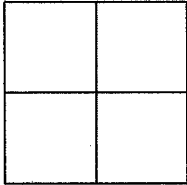
CORNER RECORD

Document Number CR APN 025-211-96

City of CORTE MADERA

County of MARIN

Brief Legal Description; LOTS 19 & 20, BLOCK M, MAP OF MADERA PARK
FILED 1909 IN BOOK 3 MAPS PAGE 24



CORNER TYPE

Government corner Control
Meander Property
Rancho Other
Date of Survey august 12, 2012

COORDINATES (optional)

N.
E.

CORNER - LEFT AS FOUND FOUND AND TAGGED ESTABLISHED REESTABLISHED REBUILT

IDENTIFICATION AND TYPE OF CORNER FOUND: EVIDENCE USED TO IDENTIFY AND PROCEEDURE TO ESTABLISH OR REESTABLISH CORNER:

FOUND 3/4 IP CORNER MONUMENTS ON COMMON LINE OF LOT 19, 3 RM 24, AND LOT C ,13 RM 81 PER CORNER RECORD: CR APN 026-211-41

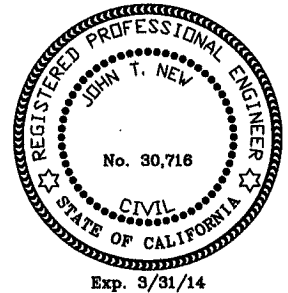
A DESCRIPTION OF THE PHYSICAL CONDITION OF THE MONUMENT FOUND AND AS SET OR RESET:

SET 5/8" ø METAL FORM STAKE WITH PLASTIC CAP RCE30716 ON FRONT PROPERTY CORNERS AS SHOWN ON SKETCH

Surveyor's Statement:

This Corner Record was prepared by me or under my direction in conformance with the Land Surveyors' Act on August 12, 2012

signed: [Signature] RCE 30716



County Surveyor's Statement:

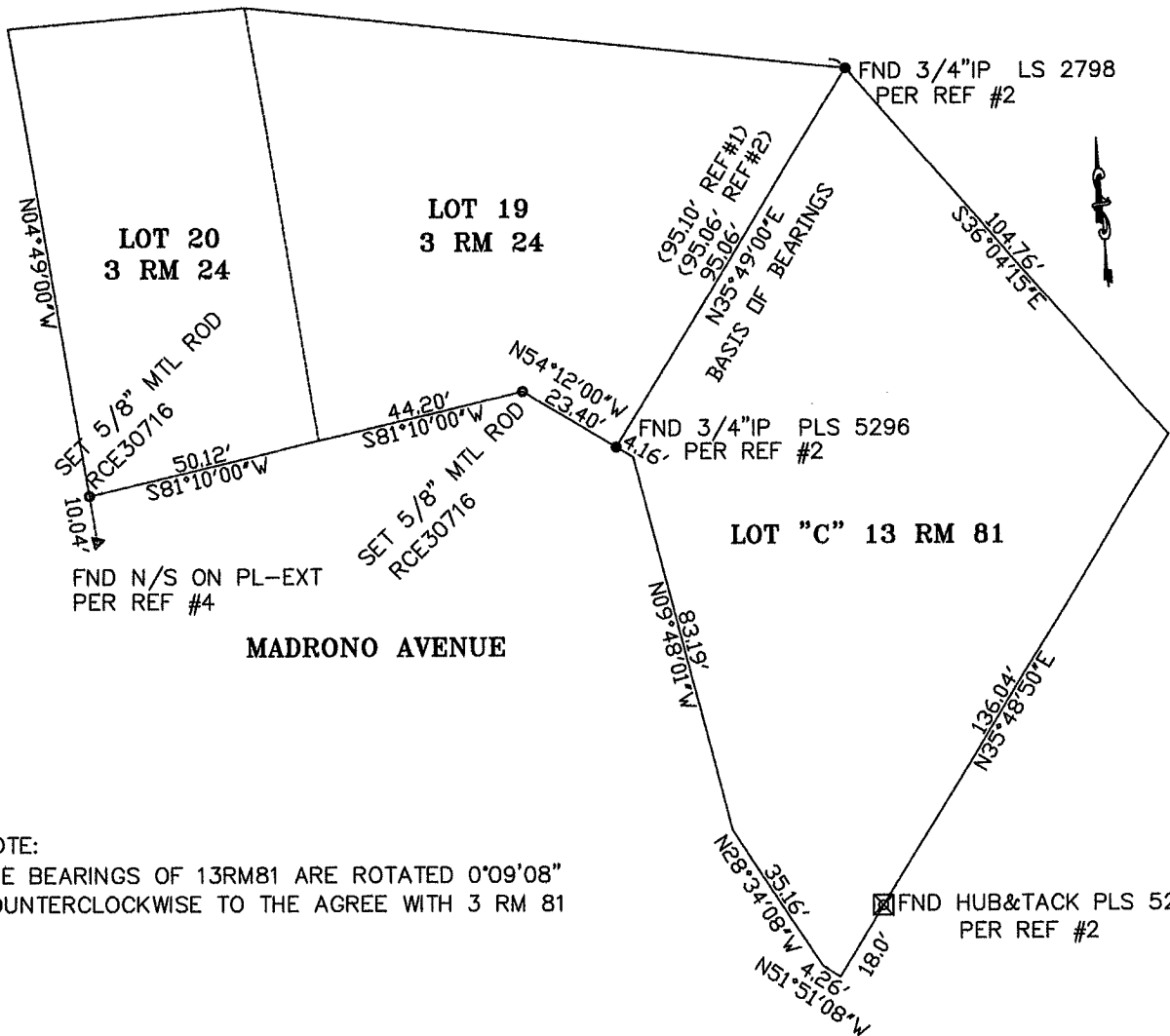
This Corner Record was received AUGUST 21, 2012.

and examined and filed DECEMBER 26, 2012.

signed: [Signature] title COUNTY SURVEYOR



County Surveyor's Comment _____

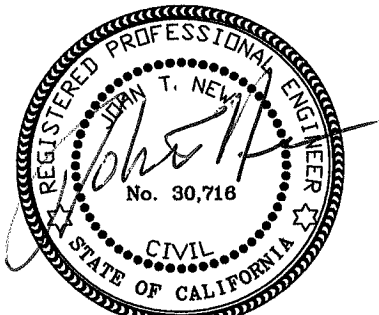


NOTE:
 THE BEARINGS OF 13RM81 ARE ROTATED 0°09'08"
 COUNTERCLOCKWISE TO THE AGREE WITH 3 RM 81

LEDGEND:

- ▼ FOUND N/S ON PL-EXT
- FOUND 3/4" IP TAGGED AS NOTED
- ☒ FOUND HUB&TACK PLS 5296
- SET 5/8" ROD W/PLASTIC CAP RCE30716

- REFERENCE #1 MAP OF MADERA PARK, 3 RM 24
- REFERENCE #2 CORNER RECORD APN 025-211-41
- REFERENCE #3 13 RM 81
- REFERENCE #4 UNRECORDED SITE PLAN ON FILE WITH THE CITY OF CORTE MADERA



Exp. 3/31/14

NEW ENGINEERING, INC.
 126 MARLOW DR. OAKLAND CA. 94605
 510-339-9887

SCALE 1=40
 AUGUST 12, 2012
 Page 2 of 2