

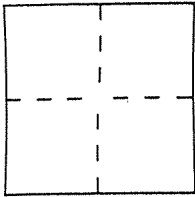
CORNER RECORD

Document Number AP 025 - 211-67

City of CORTE MADEIRA

County of MARIN, California

Brief Legal Description LOT 1 14 R.M.76



CORNER TYPE

Government Corner Control
 Meander Property
 Rancho Other
 Date of Survey 5/11/00

COORDINATES (Optional)

N. _____
 E. _____
 Zone _____ Datum _____
 Elev. _____

Corner — Left as found Found and tagged Established Reestablished Rebuilt

Identification and type of corner found: Evidence used to identify or procedure used to establish or reestablish the corner:
REESTABLISHED THE PROPERTY CORNERS FROM
THE STREET MONUMENTS SHOWN ON 14 R.M.76

A description of the physical condition of the monument as found and as set or reset: SEE SHEET 2

SURVEYOR'S STATEMENT

This Corner Record was prepared by me or under my direction in conformance with the Land Surveyors' Act on 5/11 2000.

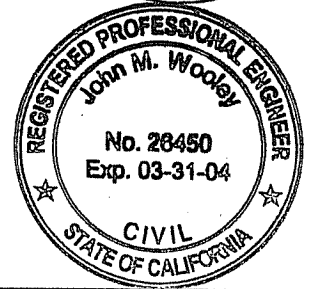
Signed Lawrence P. Doyle L.S. or R.C.E. Number P.L.S. 4694



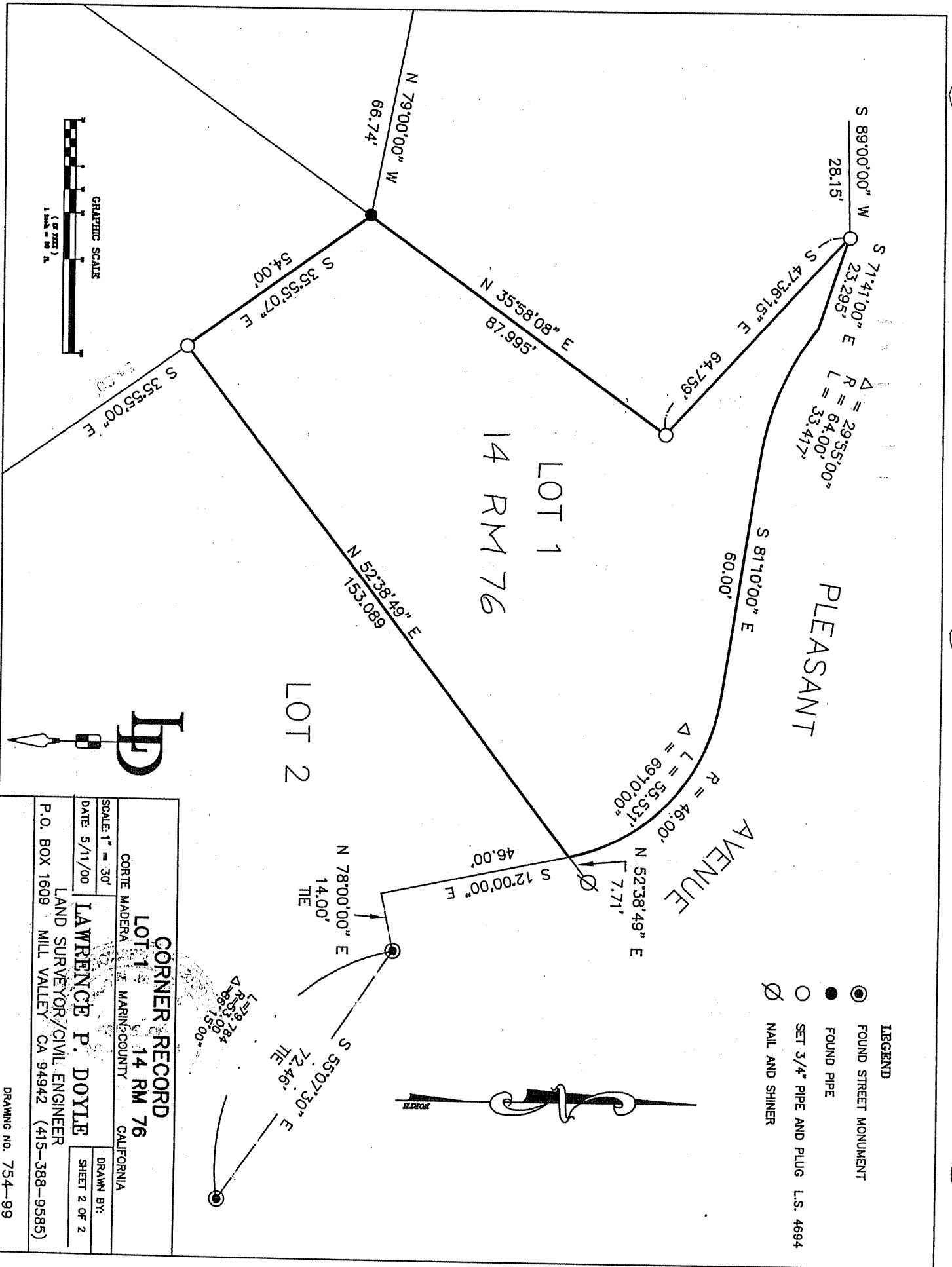
COUNTY SURVEYOR'S STATEMENT

This Corner Record was received 8-7 2000 and examined and filed 8-9 2000.

Signed John M. Woolley Title DEPUTY



County Surveyor's Comment _____



S 89°00'00" W 28.15'
 S 71°41'00" E 23.295'
 S 47°36'15" E 64.759'
 R = 29°35'00"
 L = 64.00'
 L = 33.417'

PLEASANT AVENUE

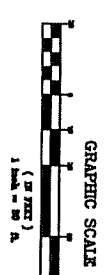
R = 46.00'
 L = 55.531'
 L = 69.1000'
 N 52°38'49" E 7.71'
 S 12°00'00" E 46.00'

LOT 1
 14 RM 76

LOT 2

N 78°00'00" E 14.00'
 S 55°07'30" E 72.46'
 L = 19.784'
 R = 33.00'
 L = 46.1500'

- LEGEND**
- FOUND STREET MONUMENT
 - FOUND PIPE
 - SET 3/4" PIPE AND PLUG L.S. 4694
 - ∅ NAIL AND SHINER



CORNER RECORD	
LOT 1 14 RM 76	
CORTE MADERA MARIN COUNTY CALIFORNIA	
SCALE: 1" = 30'	DRAWN BY:
DATE: 5/11/00	SHEET 2 OF 2
LAWRENCE P. DOYLE	
LAND SURVEYOR/CIVIL ENGINEER	
P.O. BOX 1609 MILL VALLEY CA 94942 (415-388-9585)	

DRAWING NO. 754-99