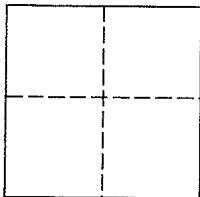


Lands of Forbes
AP #: 025-201-09
Document Number 99-059550

CORNER RECORD

City of Corte Madera, County of Marin, California

Brief Legal Description: Being a portion of Lots 31A & 31B, as shown on that certain Record Map entitled, "Map No. 2 of Chapman Park," recorded in Book 2 of Maps at page 73, Marin County Records.



CORNER TYPE

Government Corner Control

Meander Property

Rancho Other

Date of Survey: 8/20/04

COORDINATES (Optional)

N _____

E _____

Zone _____ NAD27 NAD83

NAD 83 Epoch _____

Elev. _____

Vert. Datum: NGVD29 NAVD88

Meas. Units:

Metric Imperial

Corner - Left as found Found and tagged Established Reestablished Rebuilt

Identification and type of corner found: Evidence used to identify or procedure used to establish or reestablish the corner:
See Page 2 of 2

A description of the physical condition of the monument as found and as set or reset:
See Page 2 of 2

SURVEYOR'S STATEMENT

This Corner Record was prepared by me or under my direction in conformance with

The Land Surveyor's Act on October 7, 2004.

Signed [Signature] P.L.S. 6649



COUNTY SURVEYOR'S STATEMENT

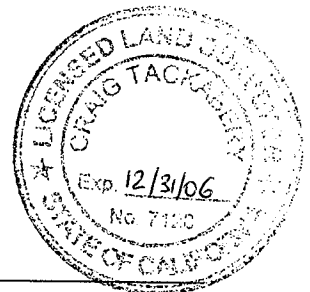
This Corner Record was received OCTOBER 12, 2004

and examined and filed OCTOBER 29, 2004

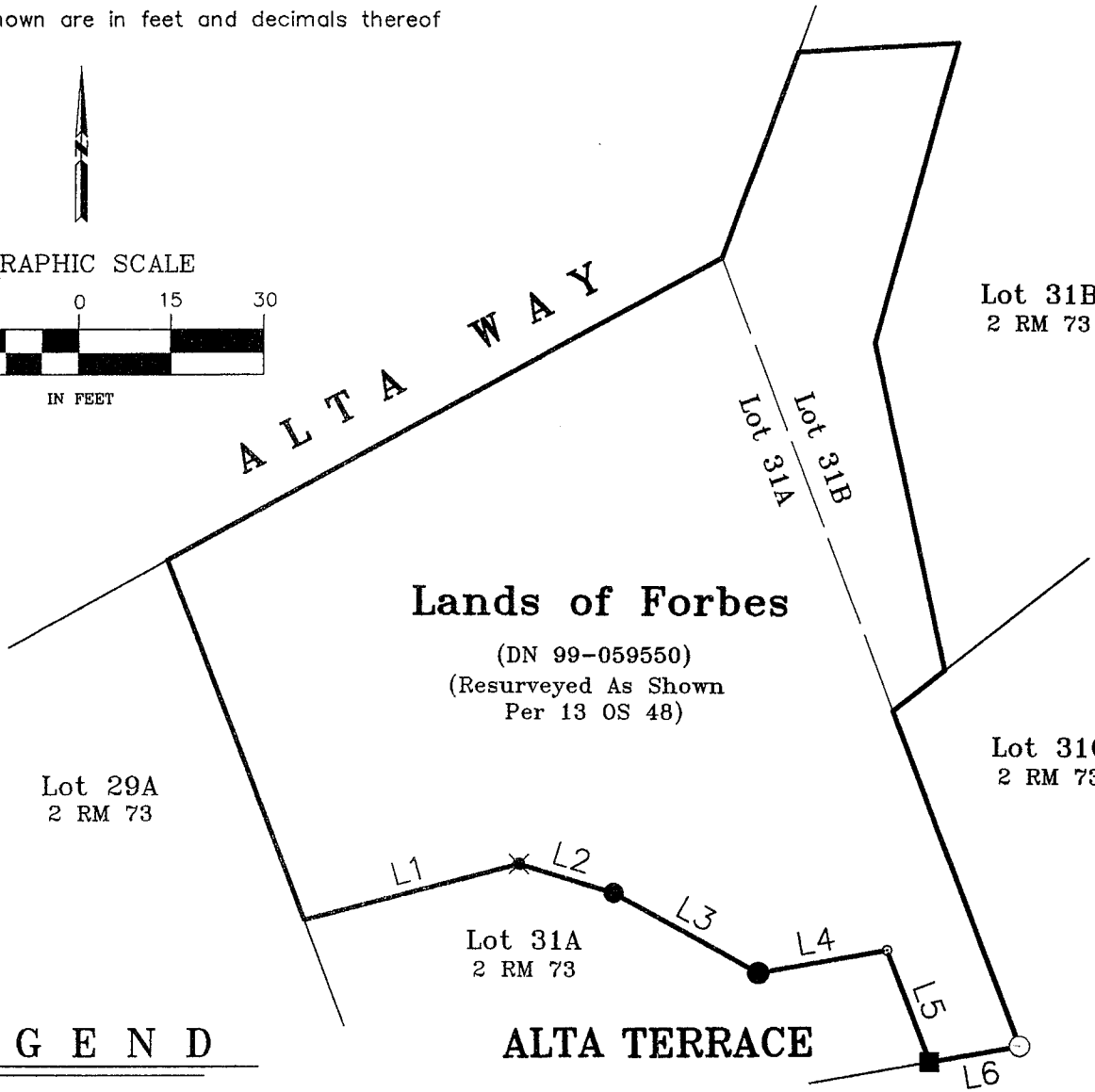
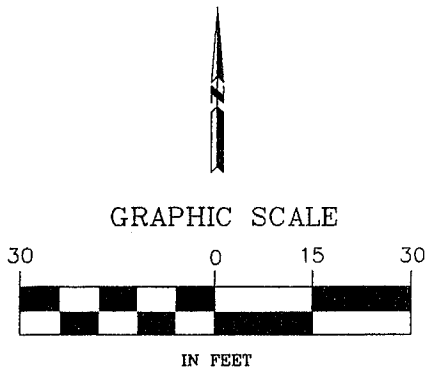
Signed [Signature] P.L.S. or R.C.E. No. 7128

Title COUNTY SURVEYOR

County Surveyors' Comment _____



All distances shown are in feet and decimals thereof



LEGEND

- Found 3/4" Iron Pipe & Plastic Plug, Stamped "LS 3770"
- ✕ Found Nail & Tag, Stamped "LS 3971"
- Found Scribed X in Concrete
- Set 3/4" Iron Pipe & Plastic Plug, Stamped "LS 3770"
- Set Nail and Tag, Stamped "LS 6649"

LINE TABLE		
LINE	LENGTH	BEARING
L1	36.38	S75°00'00"W
L2	16.35	N73°05'00"W
L3	27.12	N60°52'00"W
L4	21.50	S79°37'00"W
L5	19.88	N20°46'00"W
L6	15.00	S79°37'00"W



Lawrence A. Stevens, PLS 6649
my license expires 12/31/05

**Plat of Survey
Lands of Forbes**

Being a Portion of Lots 31A & 31B,
Map No. 2 of Chapman Park, 2 M 73

Corte Madera Marin County California
Scale: 1" = 30' August, 2004

L.A. Stevens & Associates, Inc.

Professional Land Surveyors * (415) 382-7713
7 Commercial Blvd., Suite 1 * Novato, CA 94949

Job # 04-811

Page 2 Of 2