

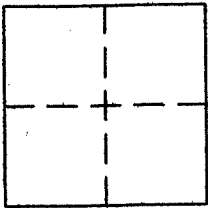
CORNER RECORD

Document Number APN 025-181-41

City of CORTE MADERA

County of MARIN, California

Brief Legal Description _____



CORNER TYPE

Government Corner Control
 Meander Property
 Rancho Other
 Date of Survey 7-26-07

COORDINATES (Optional)

N. _____
 E. _____
 Zone _____ NAD27 NAD83
 NAD83 Epoch _____
 Elev. _____
 Vert. Datum: NGVD29 NAVD88
 Meas. Units: Metric Imperial

Corner - Left as found Found and tagged Established Reestablished Rebuilt

Identification and type of corner found: Evidence used to identify or procedure used to establish or reestablish the corner:
FOUND 3/4" IP TAGGED RCE 10057 AND CUT CROSS ON THE NORTHERLY TELEPHONE MANHOLE RIM
AS SHOWN ON 34 OS 08 AND ON REVERSE.

A description of the physical condition of the monument as found and as set or reset:
SET 3/4" IRON PIPES AS PROPERTY CORNER AND LINE POINT AS SHOWN ON REVERSE.

SURVEYOR'S STATEMENT

This Corner record was prepared by me or under my direction in conformance with
 the Land Surveyor's Act on AUGUST 1, 2007

Signed [Signature] P.L.S. or R.C.E. No. PLS 5296



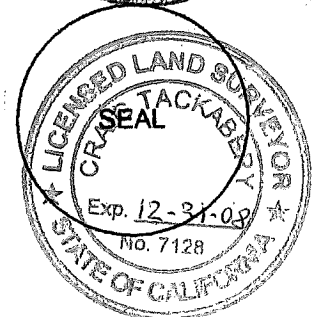
COUNTY SURVEYOR'S STATEMENT

This Corner Record was received SEPTEMBER 24, 2007

and examined and filed OCTOBER 25, 2007

Signed [Signature] P.L.S. or R.C.E. No. 7128

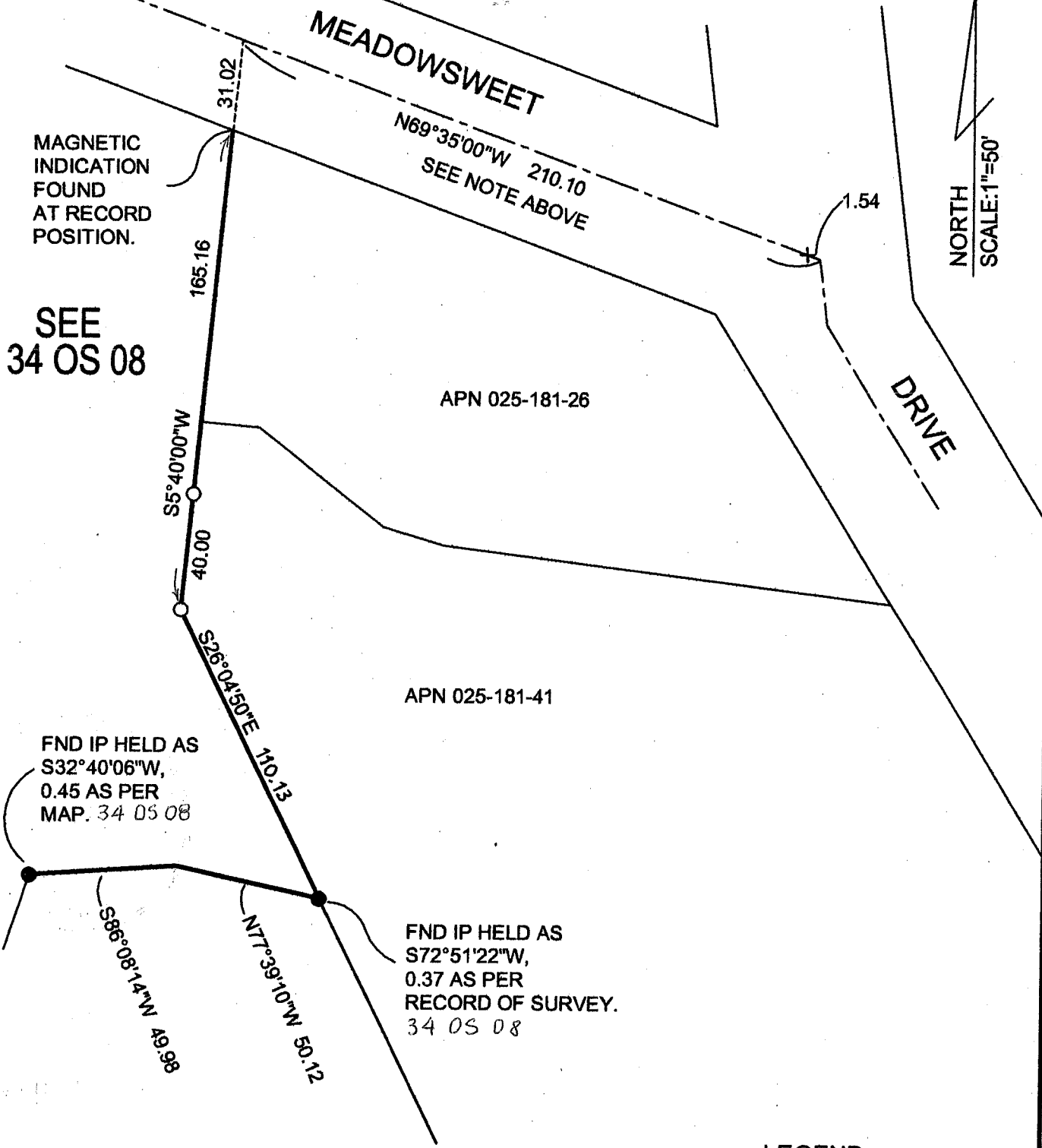
Title COUNTY SURVEYOR



County Surveyor's Comment _____

NOTE

DISTANCE ALONG THE CENTERLINE OF MEADOWSWEET DRIVE IS MIS-DIMENSIONED ON THE RECORD OF SURVEY.



MAGNETIC INDICATION FOUND AT RECORD POSITION.

SEE 34 OS 08

FND IP HELD AS S32°40'06\"W, 0.45 AS PER MAP. 34 OS 08

FND IP HELD AS S72°51'22\"W, 0.37 AS PER RECORD OF SURVEY. 34 OS 08

NORTH
SCALE: 1\"=50'

LEGEND

- + FND '+' IN MH RIM PER R/S
- SET 3/4\" IP
- FND 3/4\" IP RCE 10057 PER 34 OS 08