

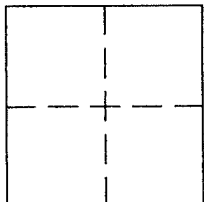
# CORNER RECORD

Document Number APN 025-181-41

City of CORTE MADERA

County of MARIN, California

Ref Legal Description LINE BETWEEN APN 025-171-41 & 025-181-43 AS SHOWN ON 34 OS 8



### CORNER TYPE

Government Corner  Control   
 Meander  Property   
 Rancho  Other   
 Date of Survey 8-30-11

### COORDINATES (Optional)

N. \_\_\_\_\_  
 E. \_\_\_\_\_  
 Zone \_\_\_\_\_ NAD27  NAD83   
 NAD83 Epoch \_\_\_\_\_  
 Elev. \_\_\_\_\_  
 Vert. Datum: NGVD29  NAVD88   
 Meas. Units: Metric  Imperial

Corner - Left as found  Found and tagged  Established  Reestablished  Rebuilt

Identification and type of corner found: Evidence used to identify or procedure used to establish or reestablish the corner:

FOUND 3/4" IP'S TAGGED RCE 10057 AND PLS 5296 AS SHOWN ON 34 OS 8 AND ON THAT  
CORNER RECORD FILED FOR APN 025-181-41 ON OCT. 25, 2007 AND ON THE REVERSE OF THIS SHEET

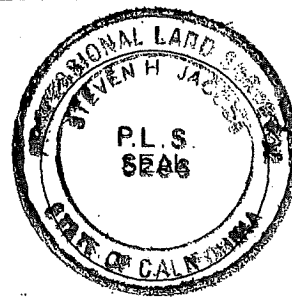
A description of the physical condition of the monument as found and as set or reset:

SET REBARS W/CAP, PLS 5296, AND HUB & TAG, LINE POINT, PLS 5296, AS SHOWN ON REVERSE

### SURVEYOR'S STATEMENT

This Corner record was prepared by me or under my direction in conformance with  
 the Land Surveyor's Act on SEPTEMBER 21, 2011

Signed [Signature] P.L.S. or R.C.E. No. PLS 5296



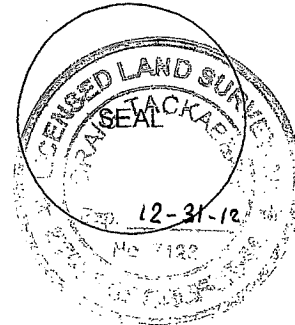
### COUNTY SURVEYOR'S STATEMENT

This Corner Record was received NOVEMBER 2, 2011

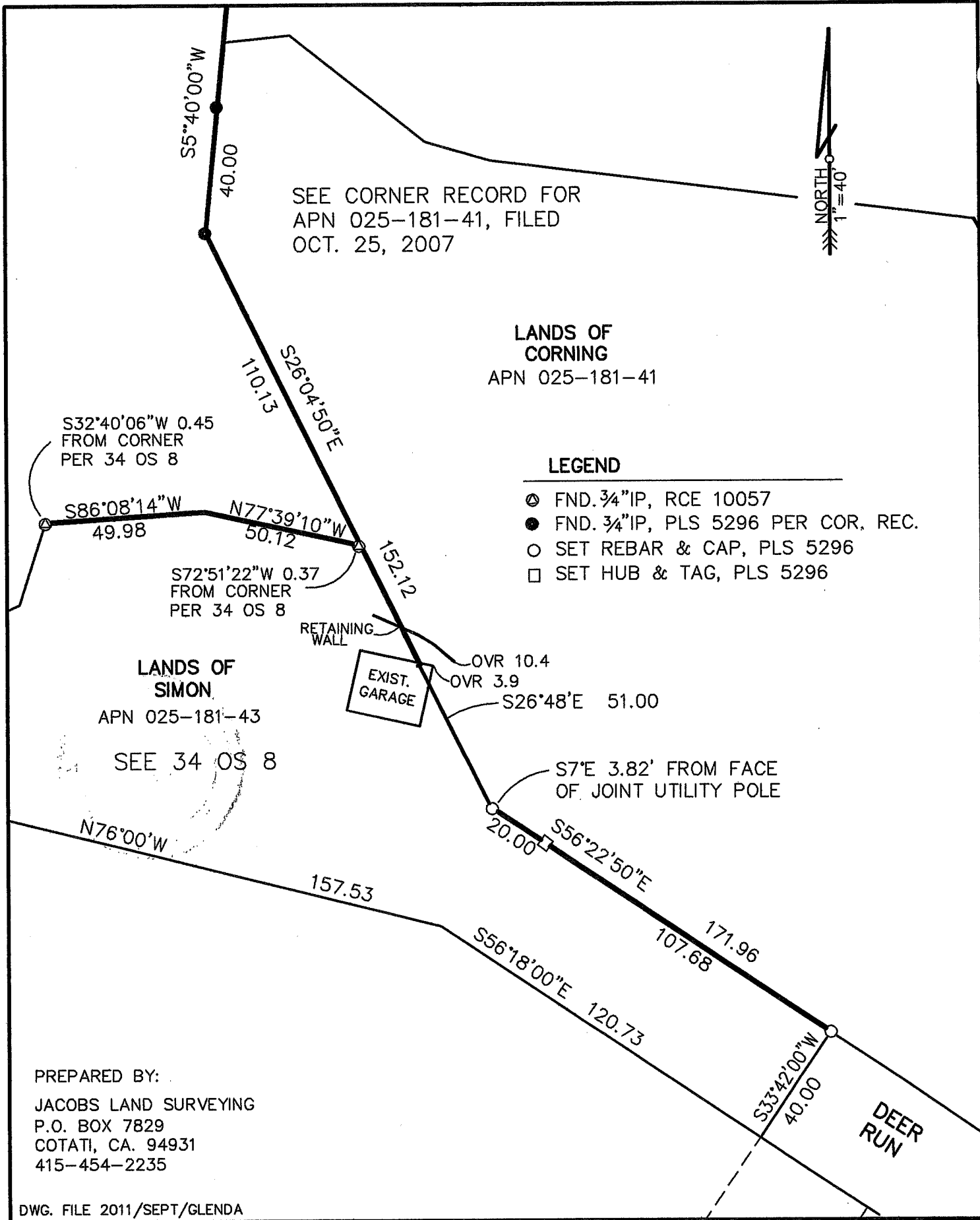
and examined and filed JANUARY 4, 2012

Signed [Signature] P.L.S. or R.C.E. No. 7128

Title COUNTY SURVEYOR



County Surveyor's Comment \_\_\_\_\_



**LEGEND**

- ⊙ FND. 3/4"IP, RCE 10057
- FND. 3/4"IP, PLS 5296 PER COR. REC.
- SET REBAR & CAP, PLS 5296
- SET HUB & TAG, PLS 5296

PREPARED BY:  
 JACOBS LAND SURVEYING  
 P.O. BOX 7829  
 COTATI, CA. 94931  
 415-454-2235

**NOTE**

DISTANCE ALONG THE CENTERLINE OF MEADOWSWEET DRIVE IS MIS-DIMENSIONED ON THE RECORD OF SURVEY.

MAGNETIC INDICATION FOUND AT RECORD POSITION.

SEE 34 OS 08

NORTH  
SCALE: 1"=50'

MEADOWSWEET

N69°35'00"W 210.10  
SEE NOTE ABOVE

1.54

DRIVE

APN 025-181-26

APN 025-181-41

FND IP HELD AS  
S32°40'06"W,  
0.45 AS PER  
MAP. 34 OS 08

FND IP HELD AS  
S72°51'22"W,  
0.37 AS PER  
RECORD OF SURVEY.  
34 OS 08

31.02

165.16

S5°40'00"W

40.00

S26°04'50"E 110.13

S86°08'14"W 49.98

N77°39'10"W 50.12

**LEGEND**

- + FND '+' IN MH RIM PER R/S
- SET 3/4" IP
- FND 3/4" IP RCE 10057 PER 34 OS 08