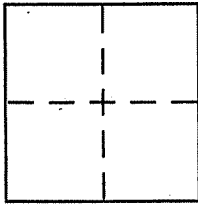


CORNER RECORD

Document Number APN 025-171-42
County of Marin, California

City of Corte Madera
Brief Legal Description Parcel 1 of 16 PM 99



CORNER TYPE

Government Corner Control
Meander Property
Rancho Other
Date of Survey 06-30-90

COORDINATES (Optional)

N. _____
E. _____
Zone _____ NAD27 NAD83
NAD83 Epoch _____
Elev. _____
Vert. Datum: NGVD29 NAVD88
Meas. Units: Metric Imperial

Corner - Left as found Found and tagged Established Reestablished Rebuilt

Identification and type of corner found: Evidence used to identify or procedure used to establish or reestablish the corner:

See page 2 of 2

A description of the physical condition of the monument as found and as set or reset:

See page 2 of 2

SURVEYOR'S STATEMENT

This Corner Record was prepared by me or under my direction in conformance with the Land Surveyor's Act on October 11, 2010

Signed [Signature] P.L.S. or R.C.E. No. 6784



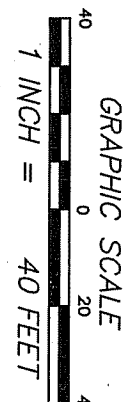
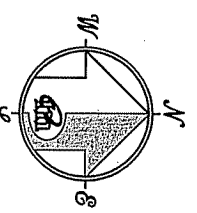
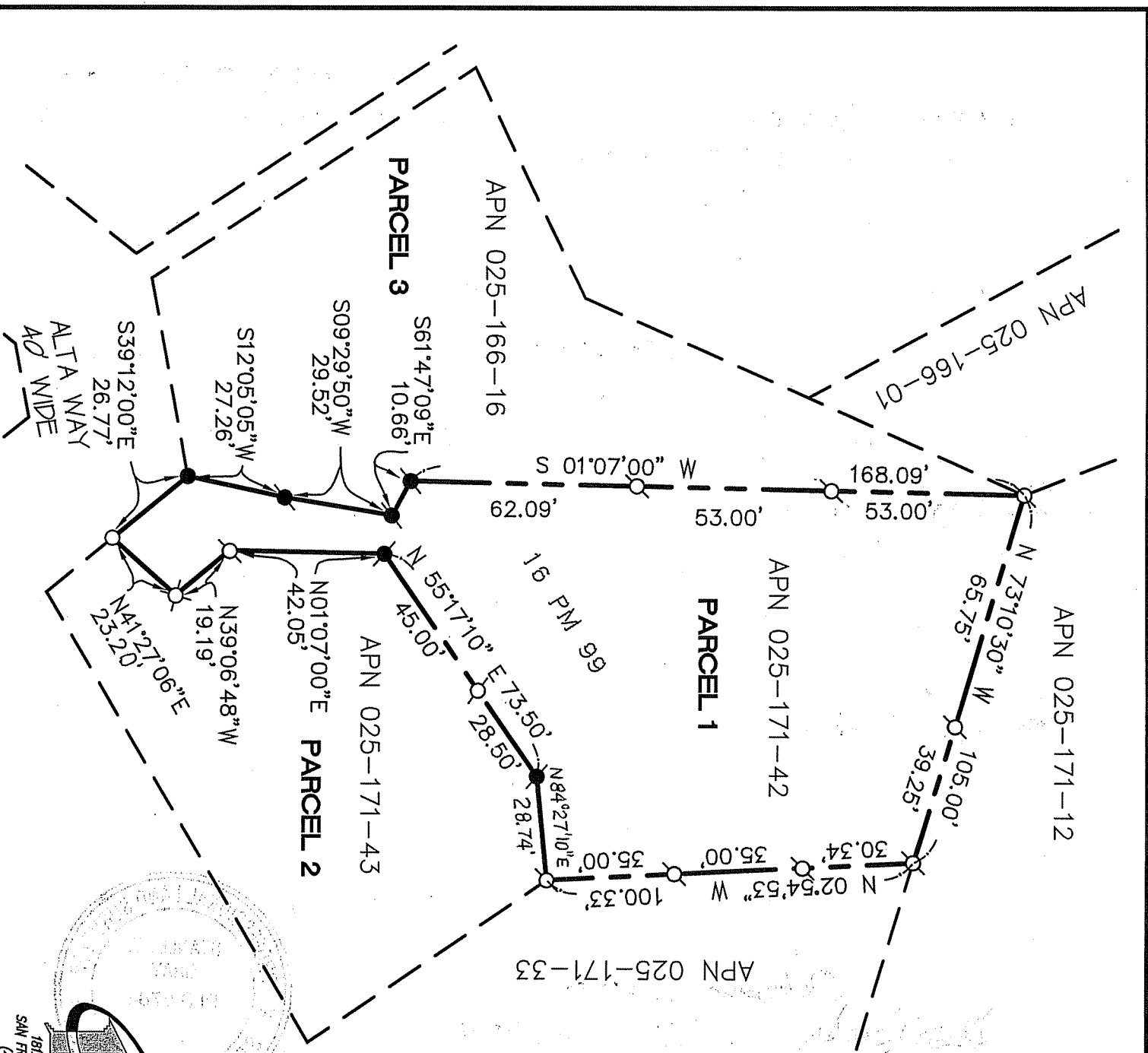
COUNTY SURVEYOR'S STATEMENT

This Corner Record was received OCTOBER 20, 2010
and examined and filed NOVEMBER 4, 2010

Signed [Signature] P.L.S. or R.C.E. No. 7128
Title COUNTY SURVEYOR



County Surveyor's Comment _____



REFERENCE

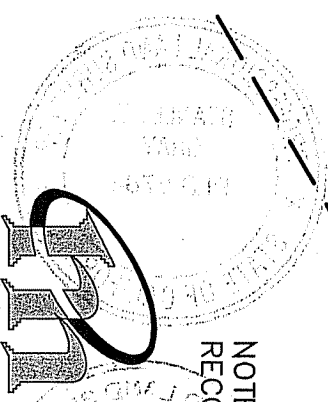
[A] "PARCEL MAP, LOT LINE ADJUSTMENT" FILED FOR RECORD AUGUST 23, 1979 IN BOOK 16 OF PARCEL MAPS, AT PAGE 99, MARIN COUNTY RECORDS.

LEGEND

- FOUND 3/4" IP AND CAP, LS 3775 PER [A]
- FOUND NAIL AND TAG, LS 3775 PER [A] IN FENCE POST
- SET 5/8" REBAR WITH CAP, PLS 6784
- SET LEAD PLUG, BRASS TACK AND TAG, PLS 6784
- ⊗ SET BRASS TACK AND TAG, PLS 6784 IN WOOD DECK

NOTE
RECORD=MEASURED

CORNER RECORD



MERIDIAN SURVEYING ENGINEERING, INC.
 1812 UNION STREET, SAN FRANCISCO, CA 94123 (415) 440-4131
 777 GRAND AVENUE, SUITE 202, SAN RAFAEL, CA 94901 (415) 456-5450