

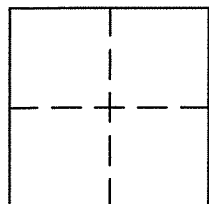
CORNER RECORD

Document Number APN 025-166-04

City of CORTE MADERA

County of MARIN, California

Brief Legal Description LOT 14A, 2 RM 73



CORNER TYPE

Government Corner  Control   
Meander  Property   
Rancho  Other   
Date of Survey SEPT. 15, 2011

COORDINATES (Optional)

N. \_\_\_\_\_  
E. \_\_\_\_\_  
Zone \_\_\_\_\_ NAD27  NAD83   
NAD83 Epoch \_\_\_\_\_  
Elev. \_\_\_\_\_  
Vert. Datum: NGVD29  NAVD88   
Meas. Units: Metric  Imperial

Corner - Left as found  Found and tagged  Established  Reestablished  Rebuilt

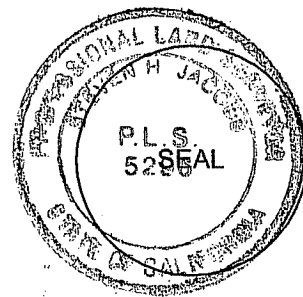
Identification and type of corner found: Evidence used to identify or procedure used to establish or reestablish the corner:  
FOUND MONUMENTS SHOWN ON 2002 MAPS 61 AND AS SHOWN ON REVERSE

A description of the physical condition of the monument as found and as set or reset:  
SET SET CUT '+' IN CONCRETE AS SHOWN ON REVERSE

SURVEYOR'S STATEMENT

This Corner record was prepared by me or under my direction in conformance with  
the Land Surveyor's Act on SEPT. 15, 2011

Signed [Signature] P.L.S. or R.C.E. No. PLS 5296



COUNTY SURVEYOR'S STATEMENT

This Corner Record was received NOVEMBER 2, 2011

and examined and filed JANUARY 4, 2012

Signed [Signature] P.L.S. or R.C.E. No. 7128

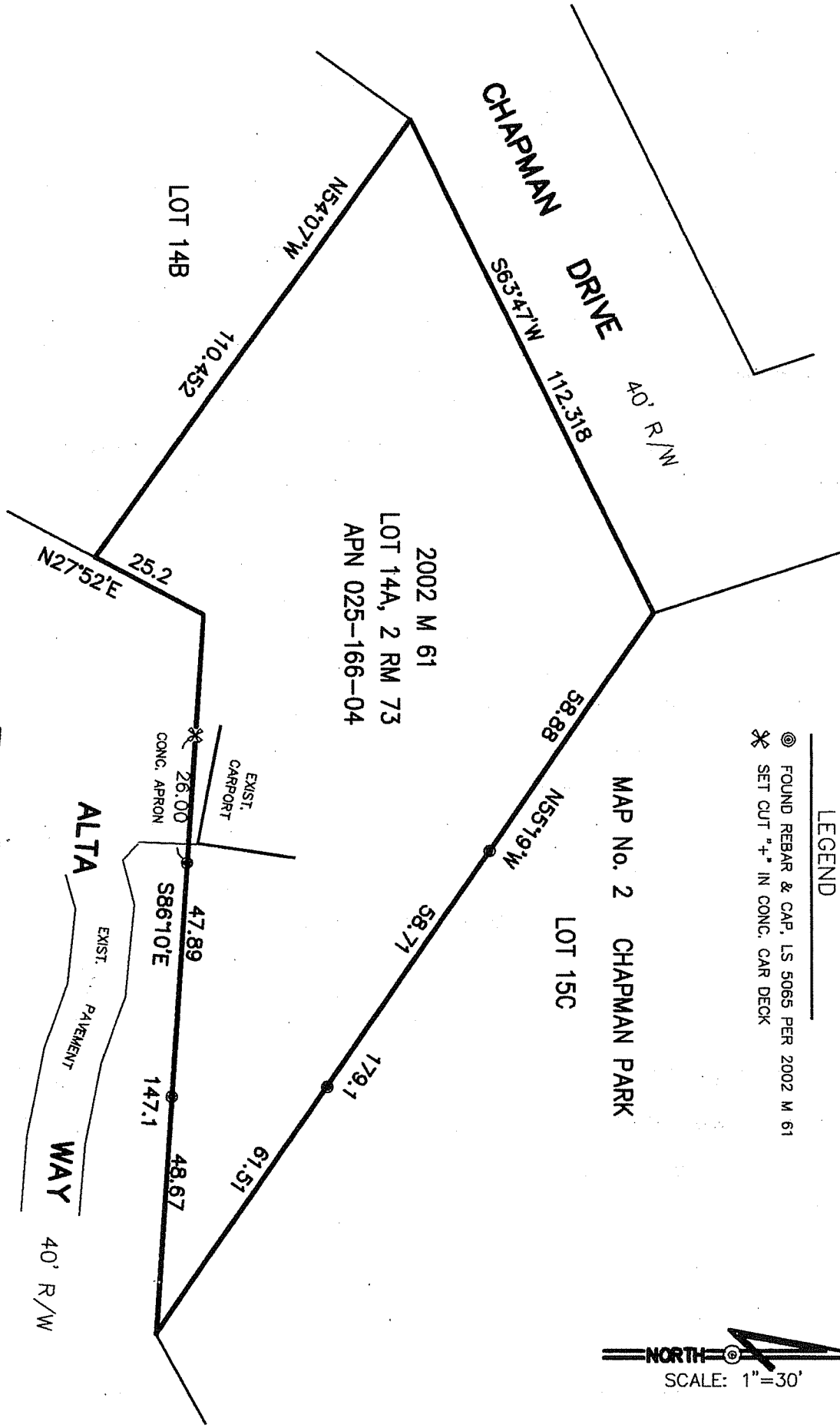
Title COUNTY SURVEYOR



County Surveyor's Comment \_\_\_\_\_

JACOBS LAND SURVEYING  
 P.O. BOX 7829  
 COTATI, CA. 94931  
 415 454-2235

JOB NO.11-1298-M VFB#2  
 DWG FILE:2011-SEPT-SAUNDERS



**LEGEND**

- ⊙ FOUND REBAR & CAP, LS 5065 PER 2002 M 61
- ✱ SET CUT "+\*" IN CONC. CAR DECK

