

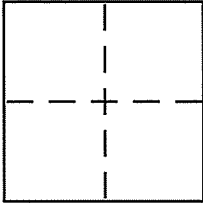
CORNER RECORD

Document Number APN 025-164-03

City of CORTE MADERA

County of MARIN, California

Brief Legal Description LOT 45C E R.M. 73



CORNER TYPE

Government Corner Control
Meander Property
Rancho Other
Date of Survey _____

COORDINATES (Optional)

N. _____
E. _____
Zone _____ NAD27 NAD83
NAD83 Epoch _____
Elev. _____
Vert. Datum: NGVD29 NAVD88
Meas. Units: Metric Imperial

Corner - Left as found Found and tagged Established Reestablished Rebuilt

Identification and type of corner found: Evidence used to identify or procedure used to establish or reestablish the corner:

RE-ESTABLISHED N/W CORNER PER 2004 MAPS 244. FOUND REBARS & CAPS LS 7053 HELD FOR BASIS OF BEARINGS AND LOT CORNER LOCATION (SEE REVERSE)

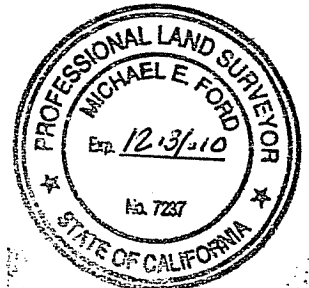
A description of the physical condition of the monument as found and as set or reset:

SET 3/4" I.P. AT LOCATION OF MISSING HUB & TACK

SURVEYOR'S STATEMENT

This Corner Record was prepared by me or under my direction in conformance with the Land Surveyor's Act on MAY 21, 2010

Signed Michael E. Ford P.L.S. or R.C.E. No. 7237



COUNTY SURVEYOR'S STATEMENT

This Corner Record was received MAY 26, 2010

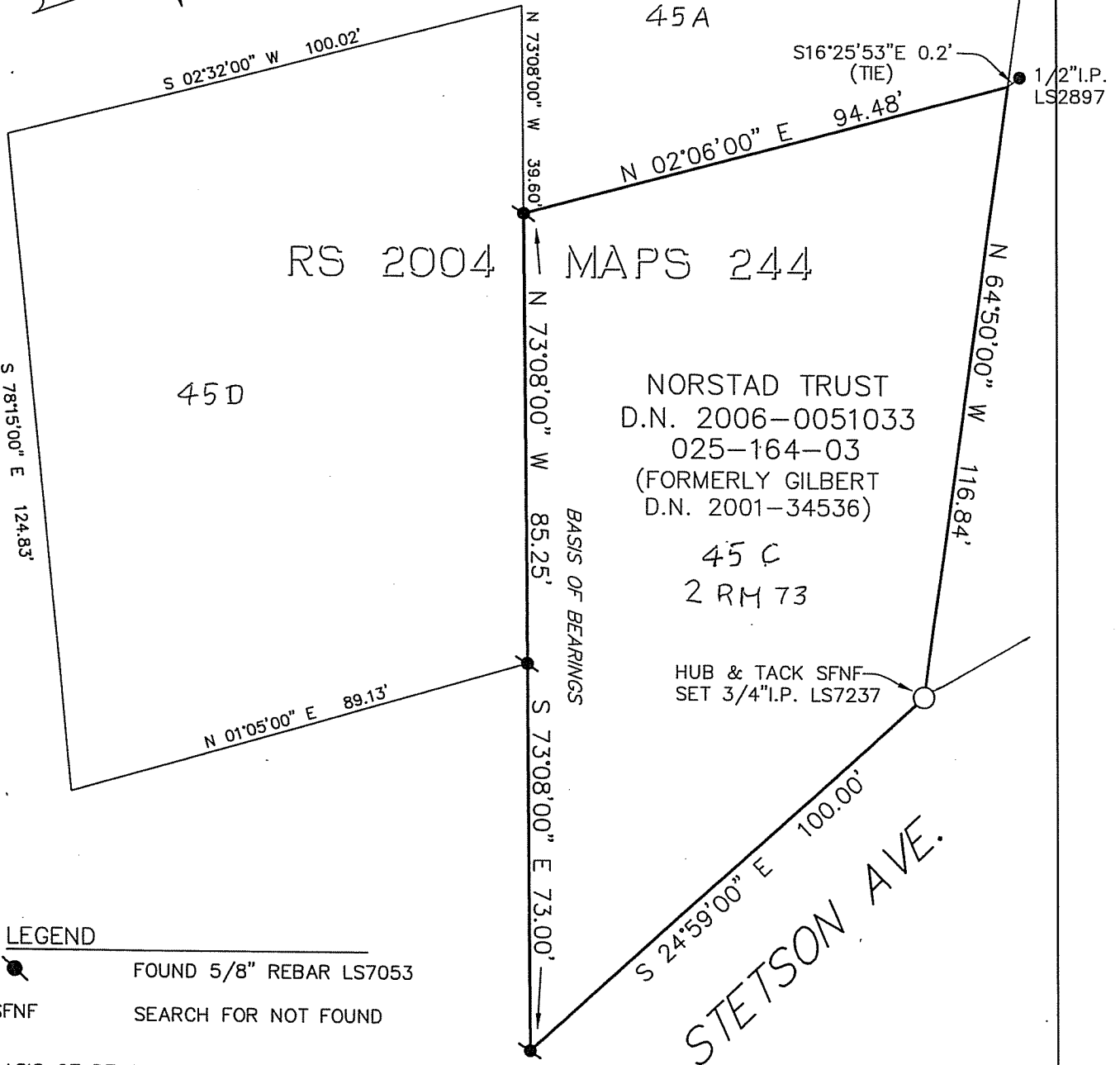
and examined and filed JUNE 21, 2010

Signed _____ P.L.S. or R.C.E. No. 7128

Title COUNTY SURVEYOR



County Surveyor's Comment _____



LEGEND

- FOUND 5/8" REBAR LS7053
- SFNF SEARCH FOR NOT FOUND

BASIS OF BEARINGS:

S73°08'00" E BETWEEN FOUND IRON PIPES SHOWN ON RECORD OF SURVEY 2004 MAPS 244, M.C.R.

NOTE:

ALL BEARINGS AND DISTANCES ARE RECORD AND MEASURED PER RECORD OF SURVEY 2004 MAPS 244



8910 sonoma hwy suite 12b
 po box 1243, kenwood, ca 95452
 p 707.833.6468 - f 707.833.5744
 www.michaelfordinc.com

NORSTAD BOUNDARY RETRACEMENT SURVEY
 164 STETSON AVE., CORTE MADERA
 APN 025-164-03 - R.O.S. 2004 MAPS 244

SCALE 1" 30' DTAE: 5/21/2010 JOB 101939

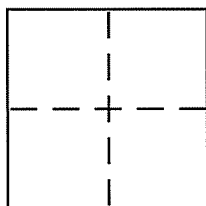
CORNER RECORD

Document Number APN 100-121-16

City of DILLON BEACH

County of MARIN, California

Brief Legal Description LOTS 6,7,8 AS SHOWN ON RECORD OF SURVEY 2000/M/92



CORNER TYPE

Government Corner Control
Meander Property
Rancho Other
Date of Survey APRIL 23, 2010

COORDINATES (Optional)

N. _____
E. _____
Zone _____ NAD27 NAD83
NAD83 Epoch _____
Elev. _____
Vert. Datum: NGVD29 NAVD88
Meas. Units: Metric Imperial

Corner – Left as found Found and tagged Established Reestablished Rebuilt

Identification and type of corner found: Evidence used to identify or procedure used to establish or reestablish the corner:

SEE PAGE 2

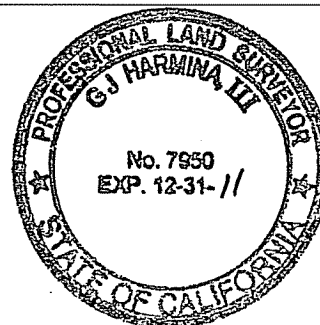
A description of the physical condition of the monument as found and as set or reset:

SEE PAGE 2

SURVEYOR'S STATEMENT

This Corner Record was prepared by me or under my direction in conformance with the Land Surveyor's Act on MAY 18 2010

Signed [Signature] P.L.S. or R.C.E. No. 7950



COUNTY SURVEYOR'S STATEMENT

This Corner Record was received MAY 24, 2010 and examined and filed JUNE 21, 2010

Signed [Signature] P.L.S. or R.C.E. No. 7128
Title COUNTY SURVEYOR



County Surveyor's Comment _____

NORTH
SCALE: 1" = 30'

Cliff Street

Cliff Street

Ocean View Avenue

Ocean View Avenue

LEGEND

- ⊙ FOUND 2 INCH BRASS DISK IN CONCRETE PUNCHED AND STAMPED "COUNTY OF MARIN" IN STANDARD MONUMENT WELL R1
- ⊗ FOUND BOAT SPIKE R1
- FOUND 3/4 INCH IRON PIPE WITH BRASS NAIL AND TAG, RCE 11181 R1
- SET 5/8 INCH REBAR, YELLOW CAP PLS 7950
- R1 "RECORD OF SURVEY" FILED 2000 MAPS 92, MARIN COUNTY RECORDS

NOTE

MONUMENT WELLS SHOWN HEREON WERE ESTABLISHED BY A CORNER RECORD FILED AT THE COUNTY OFFICE, UNDER APN 100-123-28, MARCH 3, 2009.

STEVEN J. LAFRANCHI & ASSOCIATES, INC.
CIVIL ENGINEERS ~ LAND SURVEYORS ~ LAND PLANNERS

PETALUMA THEATRE SQUARE
140 SECOND STREET, SUITE 312
PETALUMA, CALIFORNIA 94952
707-762-3122 FAX 707-762-3239

J:\Anderson, Kit\Dwg\101385CR.dwg

2000 Maps 92