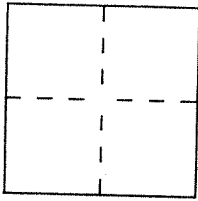


CORNER RECORD.

City of CORTE MADERA Document Number APN 025-162-08
County of MARIN, California
Brief Legal Description LOT 8, 6 RM 86



CORNER TYPE

Government Corner Control
Meander Property
Rancho Other
Date of Survey 6/5/2001

COORDINATES (Optional)

N. _____
E. _____
Zone _____ Datum _____
Elev. _____

Corner — Left as found Found and tagged Established Reestablished Rebuilt

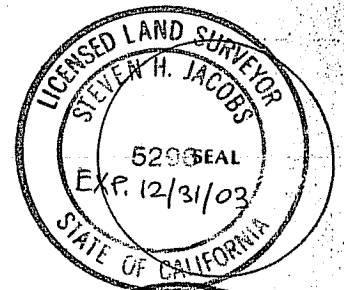
Identification and type of corner found: Evidence used to identify or procedure used to establish or reestablish the corner:
FOUND 1/2" IRON PIPES TAGGED RE 5948 AS SHOWN ON
6 RM 86 AND ON REVERSE.

A description of the physical condition of the monument as found and as set or reset: SET 3/4" IRON
PIPE AND TAG PLS 5296 AND PK NAIL AND TAG IN
PAUEMENT AS SHOWN ON REVERSE.

SURVEYOR'S STATEMENT

This Corner Record was prepared by me or under my direction in conformance with
the Land Surveyors' Act on JUNE, 11 TH 2001.

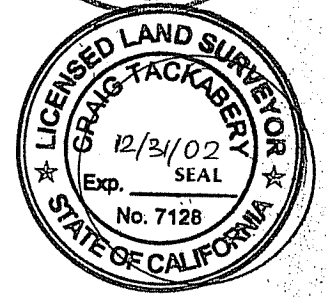
Signed [Signature] L.S. or R.C.E. Number PLS 5296



COUNTY SURVEYOR'S STATEMENT

This Corner Record was received JUNE 25, 2001 and examined
and filed JUNE 26, 2001.

Signed [Signature] Title DEPUTY

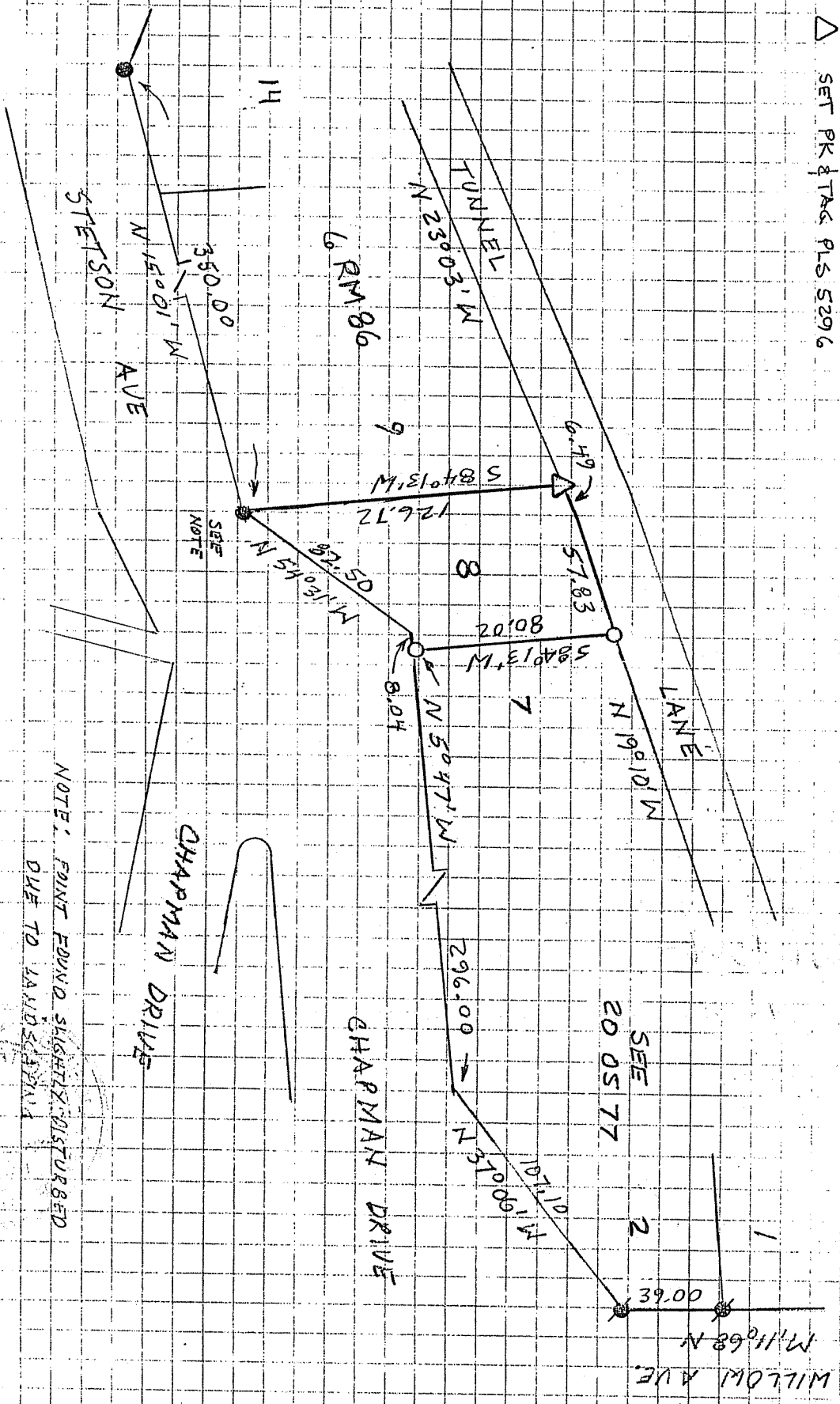


County Surveyor's Comment _____

LEGEND

- END, 1/2" IRON PIPE RE 5948
- END, 3/4" IRON PIPE LS 3175
- SET 3/4" IRON PIPE PLS 5296
- △ SET PK & TAG PLS 5296

SCALE: 1" = 60'
~~WARTY~~



NOTE: POINT FOUND SLIGHTLY DISTURBED DUE TO LANDSCAPING

