

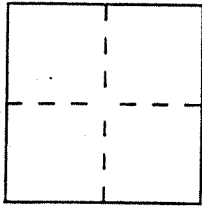
CORNER RECORD

Document Number APH 025-162-07

City of CORTE MADERA

County of MARIN, California

Brief Legal Description LOT 7, 6 RM 86



CORNER TYPE

Government Corner Control
 Meander Property
 Rancho Other
 Date of Survey _____

COORDINATES (Optional)

N. _____
 E. _____
 Zone _____ Datum _____
 Elev. _____

Corner — Left as found Found and tagged Established Reestablished Rebuilt

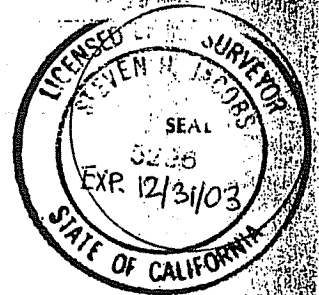
Identification and type of corner found: Evidence used to identify or procedure used to establish or reestablish the corner:
FND 1/2" IRON PIPES TAGGED RE S948 AS SHOWN ON
6 RM 86 AND ON REVERSE.

A description of the physical condition of the monument as found and as set or reset:
SET 3/4" IRON PIPES TAGGED PLS 5296 AS SHOWN
ON REVERSE

SURVEYOR'S STATEMENT

This Corner Record was prepared by me or under my direction in conformance with the Land Surveyors' Act on NOV. 27, 2001.

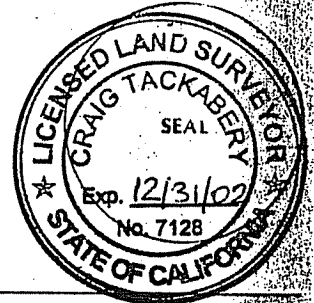
Signed [Signature] L.S. or R.C.E. Number PLS 5296



COUNTY SURVEYOR'S STATEMENT

This Corner Record was received JANUARY 8, 2002 and examined and filed JANUARY 9, 2002.

Signed [Signature] Title DEPUTY

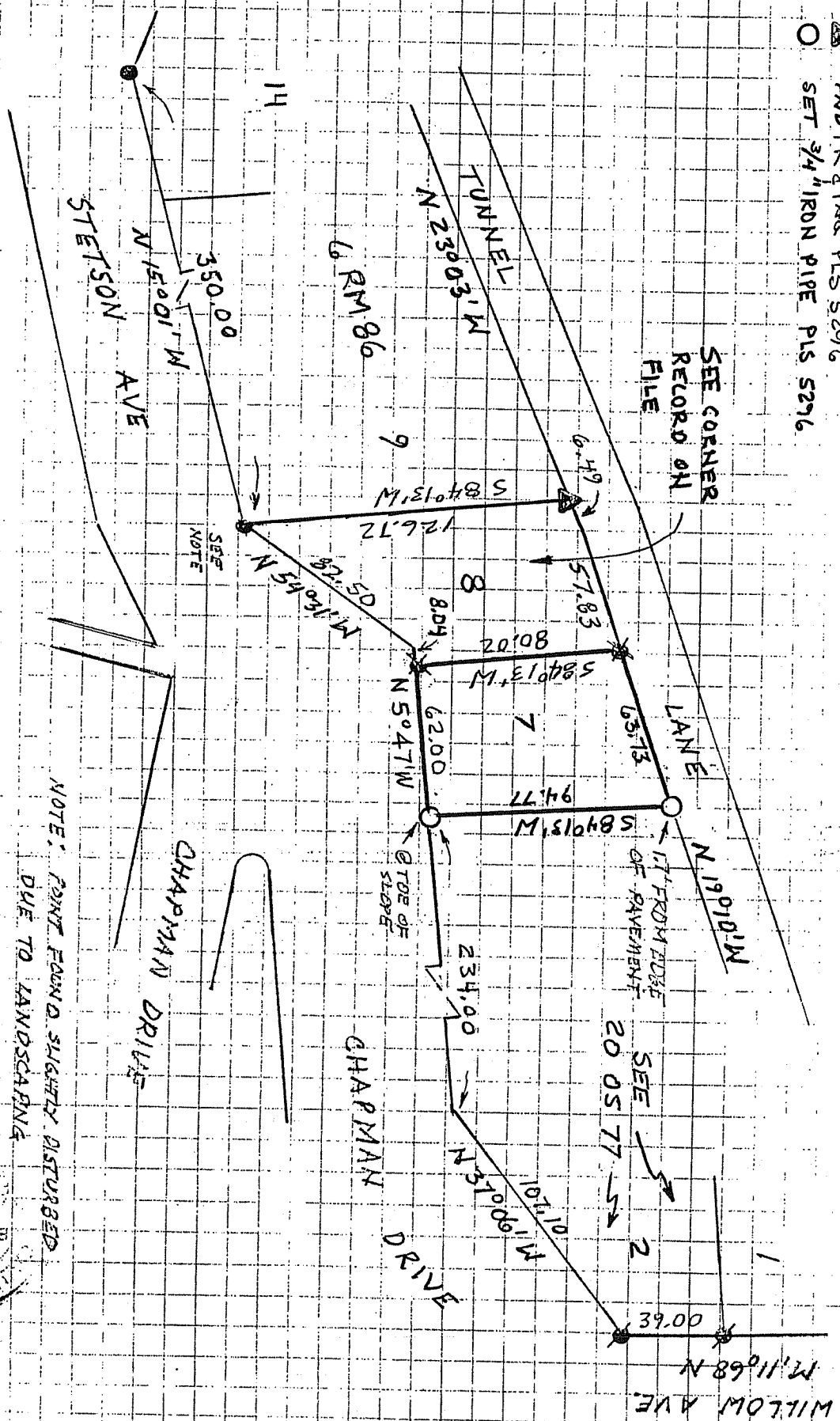


County Surveyor's Comment _____

LEGEND

- END, 1/2" IRON PIPE RE 5948
- ⊗ END, 3/4" IRON PIPE LS 3775
- ⊗ END 3/4" IRON PIPE PLS 5296
- ⊗ END PK & TAG PLS 5296
- SET 3/4" IRON PIPE PLS 5296

SCALE: 1" = 60'
NORTH



NOTE: POINT FOUND SLIGHTLY DISTURBED DUE TO LANDSCAPING

