



JERRICO ASSOCIATES

7360

CORNER RECORD

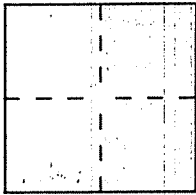
SUITE 27  
77 MARK DRIVE  
SAN RAFAEL, CA 94903

Document Number 25-132-15 & 16

City of Corte Madera

County of Marin, California

Brief Legal Description Lot 368, 386 Amended Map of Corte Madera Woods 4 RM 16



CORNER TYPE

COORDINATES  
(Optional)

Government Corner  Control   
Meander  Property   
Rancho  Other   
Date of Survey April 21, 1999

N. \_\_\_\_\_  
E. \_\_\_\_\_  
Zone \_\_\_\_\_ Datum \_\_\_\_\_  
Elev. \_\_\_\_\_

Corner — Left as found  Found and tagged  Established  Reestablished  Rebuilt

Identification and type of corner found: Evidence used to identify or procedure used to establish or reestablish the corner:

(A) (B) (C) (D) Found points per 24 OS 75

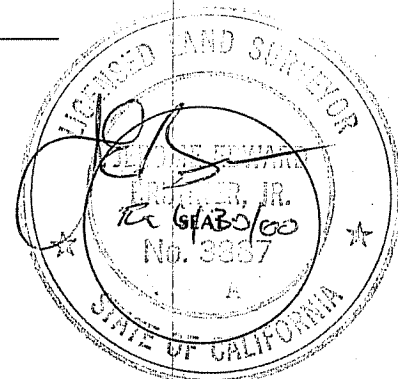
A description of the physical condition of the monument as found and as set or reset:

(E) Set plug and LS 3887 tag in brick drive.

SURVEYOR'S STATEMENT

This Corner Record was prepared by me or under my direction in conformance with the Land Surveyors' Act on April 21 19 99.

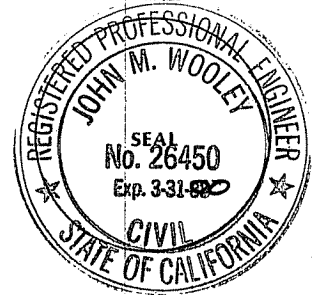
Signed [Signature] L.S. or R.C.E. Number LS 3887



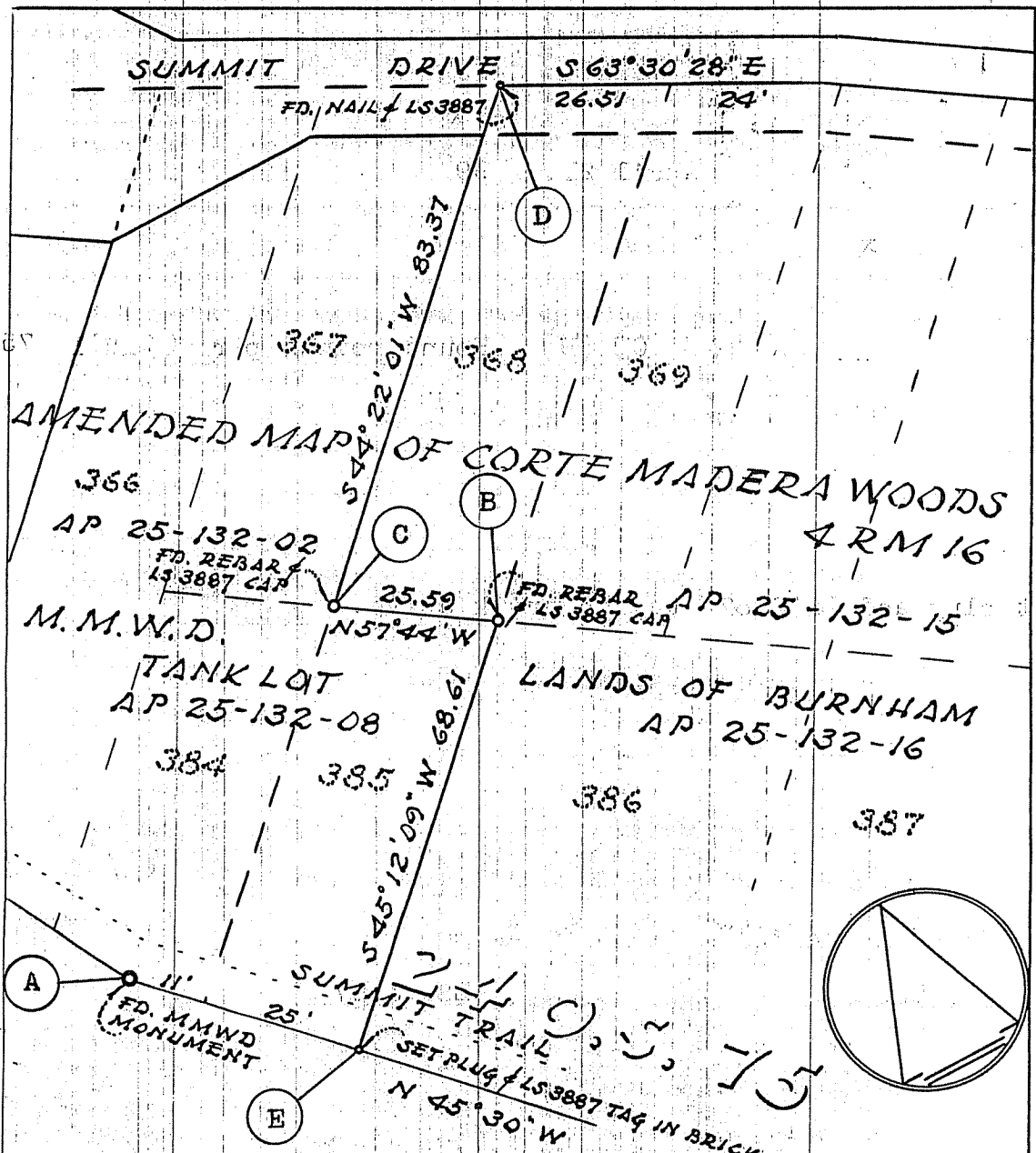
COUNTY SURVEYOR'S STATEMENT

This Corner Record was received MAY 5 19 99 and examined and filed MAY 6 19 99.

Signed [Signature] Title DEPUTY



County Surveyor's Comment \_\_\_\_\_



SURVEY OF WESTERLY LINE  
 AP 25-132-15 & 16  
 CORTE MADERA CALIFORNIA.

APRIL 1999  
 JERRICO ASSOCIATES 77 MARK DRIVE SAN RAFAEL CA.  
 S-7360