

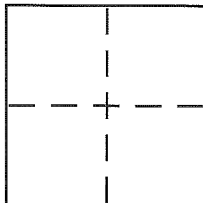
**CORNER RECORD**

Document Number APN 025-131-13

City of Corte Madera

County of Marin, California

Brief Legal Description Parcel 1 per 14 PM 32



**CORNER TYPE**

Government Corner  Control   
Meander  Property   
Rancho  Other   
Date of Survey 8/8/14

**COORDINATES (Optional)**

N. \_\_\_\_\_  
E. \_\_\_\_\_  
Zone \_\_\_\_\_ NAD27  NAD83   
NAD83 Epoch \_\_\_\_\_  
Elev. \_\_\_\_\_  
Vert. Datum: NGVD29  NAVD88   
Meas. Units: Metric  Imperial

Corner - Left as found  Found and tagged  Established  Reestablished  Rebuilt

Identification and type of corner found: Evidence used to identify or procedure used to establish or reestablish the corner:

see sheet 2

A description of the physical condition of the monument as found and as set or reset:

see sheet 2

**SURVEYOR'S STATEMENT**

This Corner Record was prepared by me or under my direction in conformance with the Land Surveyor's Act on 9/16/14

Signed [Signature] P.L.S or R.C.E. No. 6784



**COUNTY SURVEYOR'S STATEMENT**

This Corner Record was received 9/22/2014

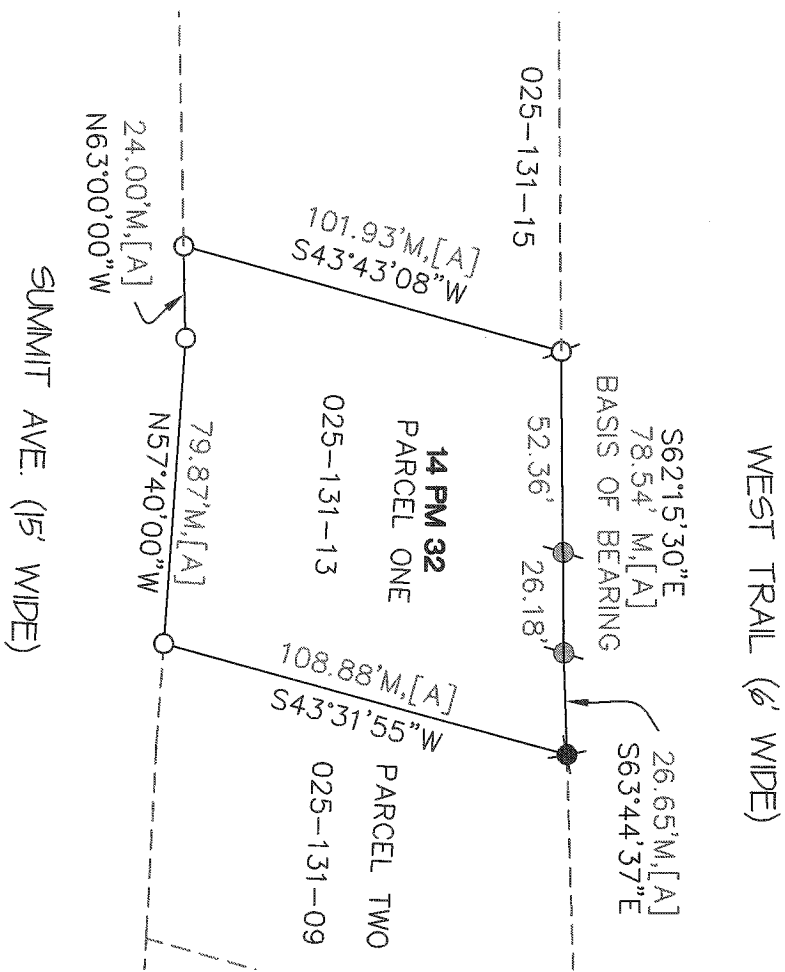
and examined and filed OCTOBER 31, 2014

Signed [Signature] P.L.S or R.C.E. No. 7821

Title DEPUTY



County Surveyor's Comment \_\_\_\_\_



NOTE:  
RECORD=MEASURED.

WEST TRAIL (6' WIDE)

SUMMIT AVE. (15' WIDE)

662.15'30"E  
78.54' M.[A]  
BASIS OF BEARING

26.65' M.[A]  
S63.44'37"E

14 PM 32  
PARCEL ONE  
025-131-13

PARCEL TWO  
025-131-09

101.93' M.[A]  
S43.43'08"W

108.88' M.[A]  
S43.31'55"W

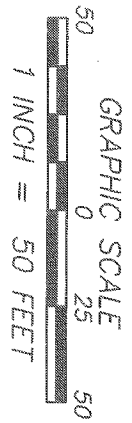
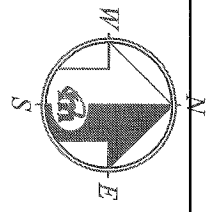
24.00' M.[A]  
N63.00'00"W

79.87' M.[A]  
N57.40'00"W

025-131-15

52.36'

26.18'



**REFERENCE**

LANDS OF AMARAL AND LAND OF SHARGEL BEING LOTS 355-361 AMENDED MAP OF CORTE MADERA WOODS (ARM16) FILED FOR RECORD SEPTEMBER 21, 1977 IN BOOK 14 OF MAPS, AT PAGE 32, MARIN COUNTY RECORDS.

**LEGEND**

- FD 2X2 HUB PER 14PM32 AND REPLACED WITH A 5/8" REBAR WITH CAP, PLS 6784
- SET NAIL AND TAG PLS 6784
- FOUND CONC MON RCE 9626
- FOUND REBAR AND CAP LS 3887 DISTURBED

CORNER RECORD



**MERIDIAN SURVEYING**  
ENGINEERING, INC.

2958 VAN NESS AVENUE (14170) 777 GRAND AVENUE, #202  
SAN FRANCISCO, CA 94109 SAN RAFAEL, CA 94901  
(415) 440-4131 info@meridiansurvey.com (415) 456-5450