

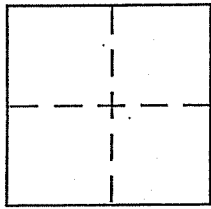
CORNER RECORD

Document Number 025-121-36

City of Corte Madera

County of MARIN, California

Brief Legal Description Corte Madera library as shown on 13 O.S. 31



CORNER TYPE

Government Corner Control
Meander Property
Rancho Other
Date of Survey _____

COORDINATES (Optional)

N. _____
E. _____
Zone _____ NAD27 NAD83
NAD83 Epoch _____
Elev. _____
Vert. Datum: NGVD29 NAVD88
Meas. Units: Metric Imperial

Corner - Left as found Found and tagged Established Reestablished Rebuilt

Identification and type of corner found: Evidence used to identify or procedure used to establish or reestablish the corner:

Used monuments shown for basis of bearings
- All hubs were NOT found - some remains found in some
places -
- Corners per 13 OS 31 set as shown on back -

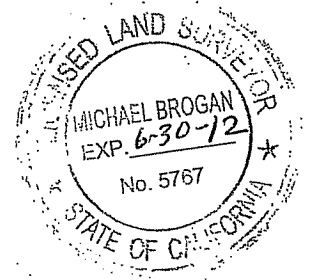
A description of the physical condition of the monument as found and as set or reset:

- See back -

SURVEYOR'S STATEMENT

This Corner Record was prepared by me or under my direction in conformance with the Land Surveyor's Act on April 9, 2012

Signed Michael C. Brogan P.L.S or R.C.E. No. LS 5767
Chief of Surveys - Marin County



COUNTY SURVEYOR'S STATEMENT

This Corner Record was received APRIL 10, 2012

and examined and filed MAY 30, 2012

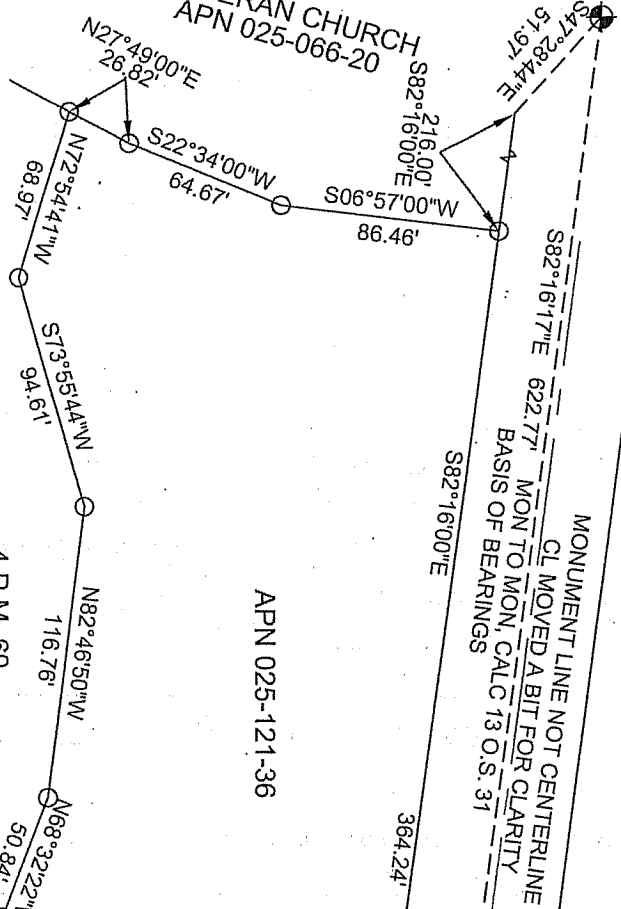
Signed [Signature] P.L.S or R.C.E. No. 7128

Title COUNTY SURVEYOR



County Surveyor's Comment _____

LUTHERAN CHURCH
APN 025-066-20



4 P.M. 60
PARCEL 2.
APN 025-121-47

APN 025-121-36

MARIN COUNTY
CORTE MADERA LIBRARY
13 O.S. 31

MEADOWSWEET DRIVE (60' WIDE)

⊕ = STD. COUNTY MONUMENT FOUND 13 O.S. 31
○ = SET 1/2" REBAR/PLASTIC CAP STAMPED 'MARIN COUNTY SURVEYOR'
UNLESS OTHERWISE NOTED

NOT TO SCALE

S21°30'47"W
250.04'
APN 025-072-03

MONUMENT LINE NOT CENTERLINE
CL MOVED A BIT FOR CLARITY
MON TO MON, CALC 13 O.S. 31
BASIS OF BEARINGS

S07°25'54"W
29.70'
TIE

S68°25'00"E
285.52'

S82°16'00"E
364.24'

N14°39'30"E
30.22'
BISECTOR

SET 'X' TOP CONC WALL

