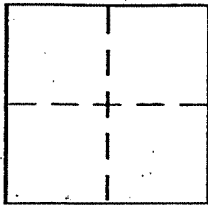


# CORNER RECORD

Document Number A.P.N. 25-121-31City of Corte MaderaCounty of Marin, CaliforniaBrief Legal Description Lot 1 Resubdivision of Grace Court 12 RM 108

### CORNER TYPE

Government Corner  Control   
 Meander  Property   
 Rancho  Other   
 Date of Survey \_\_\_\_\_

### COORDINATES (Optional)

N. \_\_\_\_\_  
 E. \_\_\_\_\_  
 Zone \_\_\_\_\_ NAD27  NAD83   
 NAD83 Epoch \_\_\_\_\_  
 Elev. \_\_\_\_\_  
 Vert. Datum: NGVD29  NAVD88   
 Meas. Units: Metric  Imperial

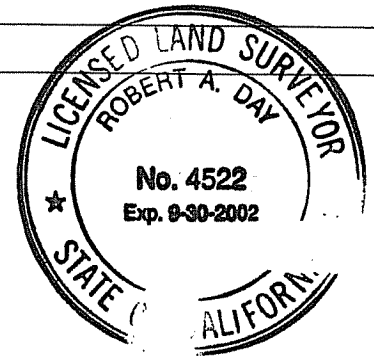
Corner - Left as found  Found and tagged  Established  Reestablished  Rebuilt

Identification and type of corner found: Evidence used to identify or procedure used to establish or reestablish the corner:  
Found lead and tag stamped "LS 3791" at the northwesterly and  
southeast corners. Found 3/4" iron pipe and tag "LS 3791" along  
northerly line of subdivision as shown on page 2.

A description of the physical condition of the monument as found and as set or reset:  
Set lead and tag stamped "RCE 18221" at the northeast corner.

### SURVEYOR'S STATEMENT

This Corner Record was prepared by me or under my direction in conformance with  
 the Land Surveyor's Act on APRIL 22, 2002  
 Signed [Signature] P.L.S. or R.C.E. No. 4522

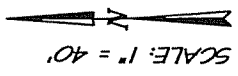
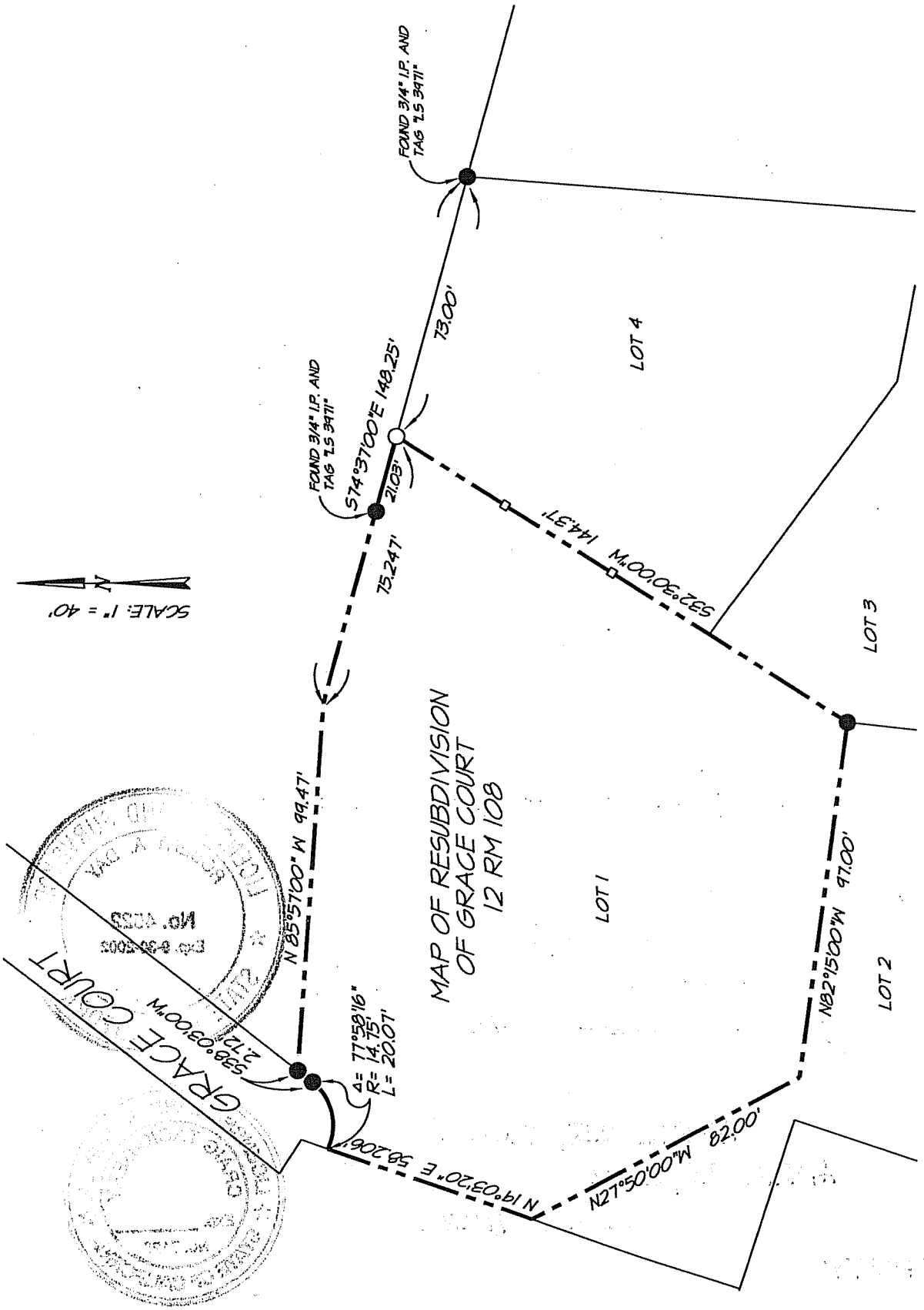


### COUNTY SURVEYOR'S STATEMENT

This Corner Record was received APRIL 25, 2002  
 and examined and filed APRIL 26, 2002  
 Signed [Signature] P.L.S. or R.C.E. No. 7128  
 Title DEPUTY



County Surveyor's Comment \_\_\_\_\_



**LEGEND**

- FOUND LEAD AND TAG 1.5. 3971" UNLESS NOTED OTHERWISE
- SET LEAD AND TAG STAMPED "RCE 18221"
- SET WOOD HUB ON PROPERTY LINE

**NOTE:**

ALL DIMENSIONS SHOWN HEREON ARE PER 12 RM 108 UNLESS NOTED OTHERWISE

**EXHIBIT "A"**



**I.L. SCHWARTZ ASSOCIATES, INC.®**  
 CIVIL ENGINEERING AND LAND SURVEYING

79 GALLI DRIVE NOVATO, CA 94949 (415)883-9200 FAX 883-2763

A.P.N. 25-121-31

DATE: 04/19/02  
 FILE: 7299REC.DWG