

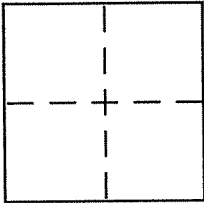
CORNER RECORD

Document Number 025-112-05

City of CORTE MADERA

County of MAZIN, California

Brief Legal Description A PORTION OF THE MCCUE ORCHARD TRACT, 1998M41



CORNER TYPE

Government Corner Control
Meander Property
Rancho Other
Date of Survey _____

COORDINATES (Optional)

N. _____
E. _____
Zone _____ NAD27 NAD83
NAD83 Epoch _____
Elev. _____
Vert. Datum: NGVD29 NAVD88
Meas. Units: Metric Imperial

Corner - Left as found Found and tagged Established Reestablished Rebuilt

Identification and type of corner found: Evidence used to identify or procedure used to establish or reestablish the corner:

SEE PAGE 2 OF 2

A description of the physical condition of the monument as found and as set or reset: _____

SEE PAGE 2 OF 2

SURVEYOR'S STATEMENT

This Corner Record was prepared by me or under my direction in conformance with the Land Surveyor's Act on 12/11/06

Signed [Signature] P.L.S. or R.C.E. No. 6784



COUNTY SURVEYOR'S STATEMENT

This Corner Record was received DECEMBER 13, 2006

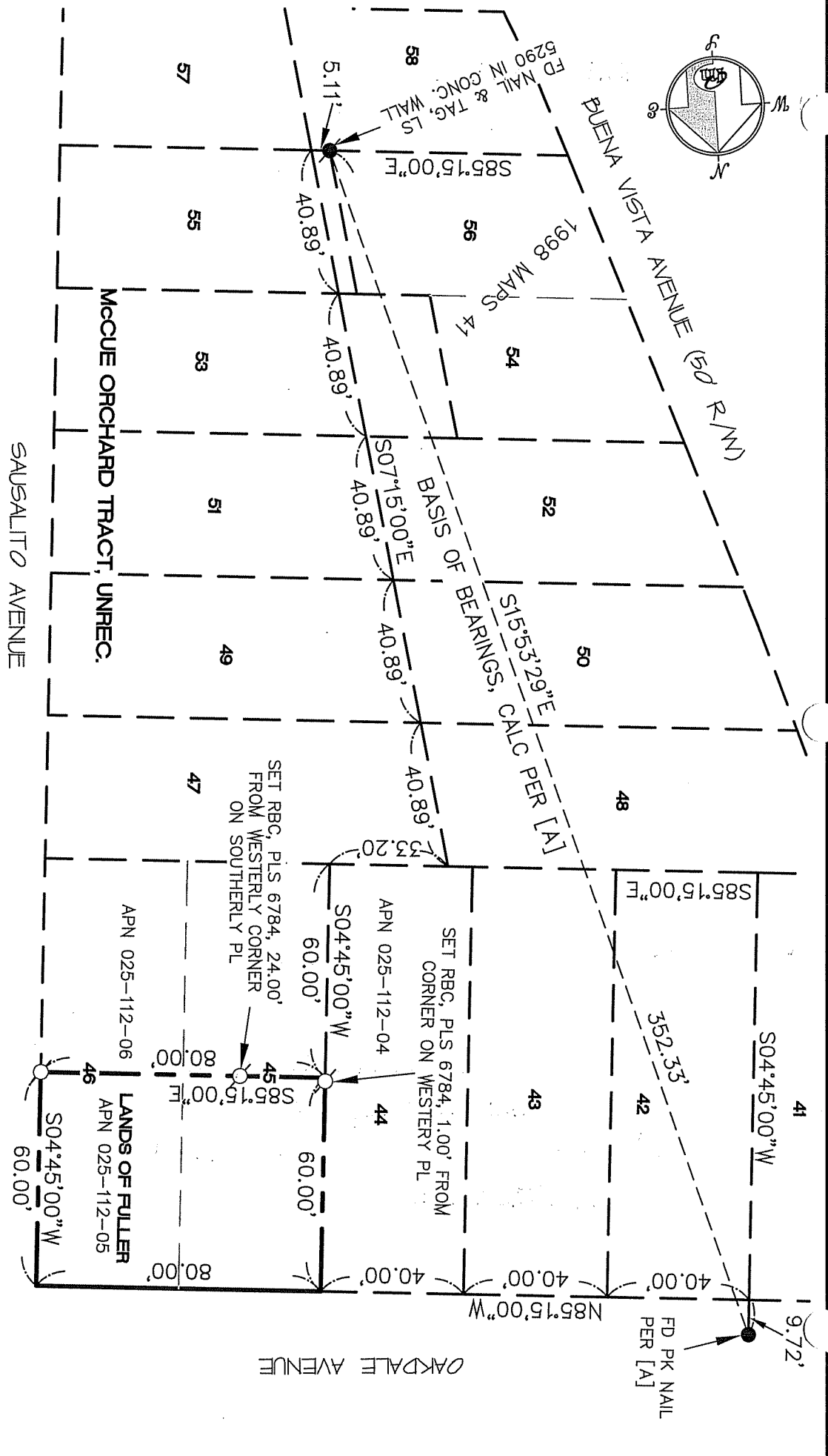
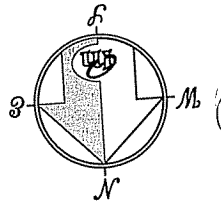
and examined and filed JANUARY 16, 2007

Signed [Signature] P.L.S. or R.C.E. No. 7128

Title COUNTY SURVEYOR

County Surveyor's Comment _____





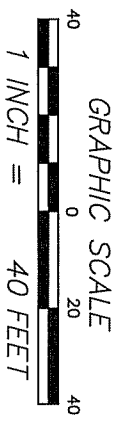
LEGEND

- FOUND MONUMENT AS NOTED
- SET 5/8" REBAR WITH CAP, PLS 6784
- FD FOUND

NOTE
RECORD≠MEASURED

REFERENCE

[A] RECORD OF SURVEY, LANDS OF HAYES, RECORDED APRIL 21, 1998 IN BOOK 1998 OF MAPS AT PAGE 41, MARIN COUNTY RECORDS.



CORNER RECORD

MERIDIAN SURVEYING ENGINEERING, INC.
 777 GRAND AVENUE, SUITE 202
 SAN RAFAEL, CA 94901
 (415) 456-5450

1812 UNION STREET
 SAN FRANCISCO, CA 94123
 (415) 440-4131
 info@meridiansurvey.com

06157