

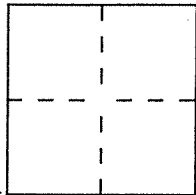
CORNER RECORD

Document Number AP # 25-094-43

City of Corte Madera

County of Marin, California

Brief Legal Description AP # 025-094-43, 465 Redwood Road



CORNER TYPE

Government Corner Control
Meander Property
Rancho Other
Date of Survey 11-7-95

COORDINATES (Optional)

N. _____
E. _____
Zone _____ Datum _____
Elev. _____

Corner — Left as found Established Reestablished Rebuilt

Identification and type of corner found: Evidence used to identify or procedure used to establish or reestablish the corner:
We found Street Monuments set (used) by 12 05 68, and verified calculations of this Survey. Other found points were in agreement with these street monuments.

A description of the physical condition of the monument as found and as set or reset: We set two corners as shown upon 12 05 68: one 1/2 rebar with cap embossed LS 5290, and one nail and tag LS 5290 (See Sketch Map page 2)

SURVEYOR'S STATEMENT

This Corner Record was prepared by me or under my direction in conformance with the Land Surveyors' Act on Dec. 13 19 95.

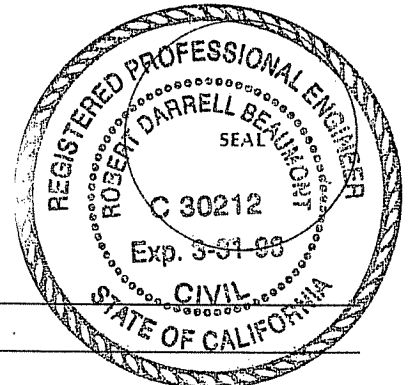
Signed David Harp L.S. or R.C.E. Number 5290



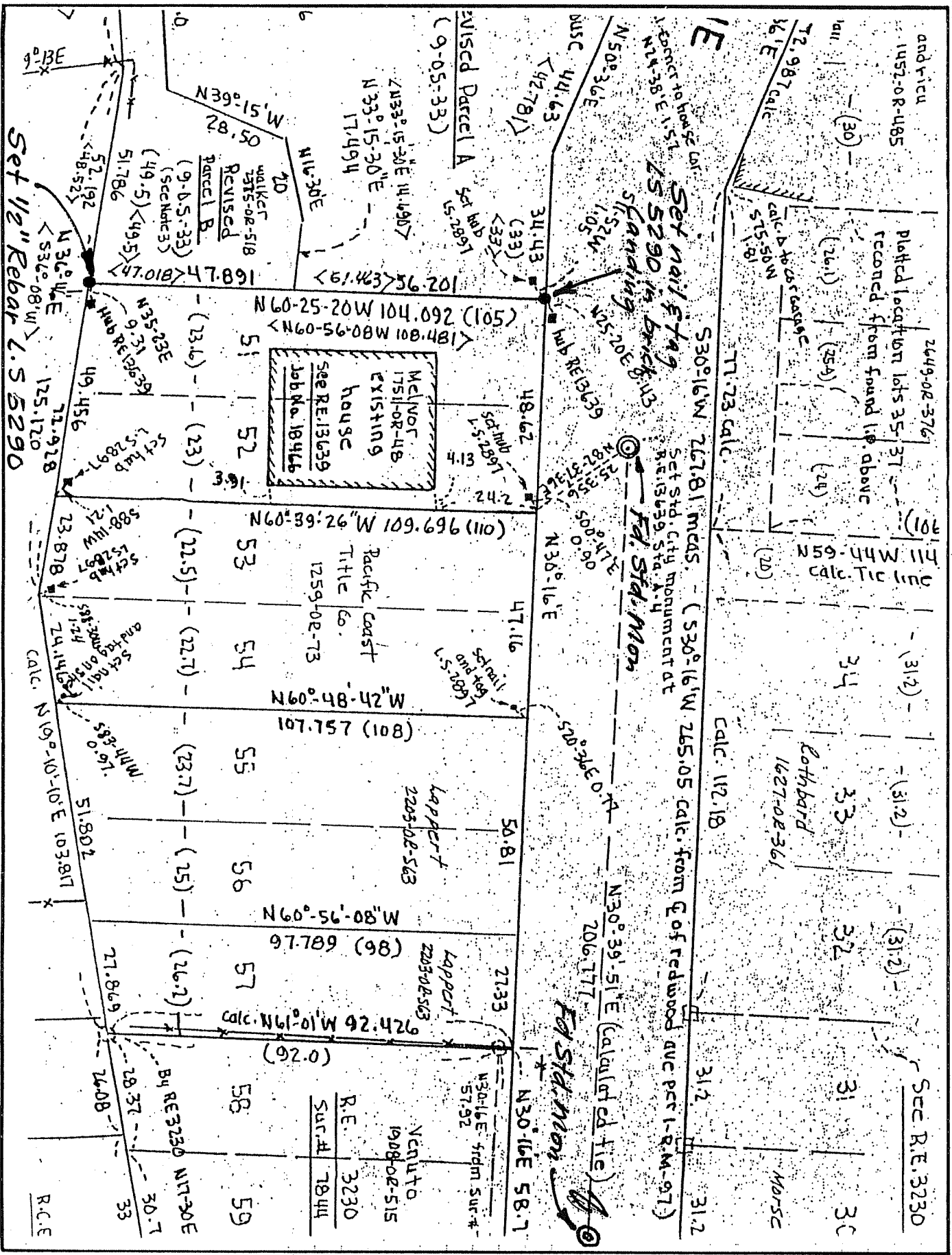
COUNTY SURVEYOR'S STATEMENT

This Corner Record was received Dec. 15 19 95 and examined and filed 12-18 19 95.

Signed [Signature] Title DES



County Surveyor's Comment _____



Set 1/2" Rebar L.S. 5290

12 O.S. 68

Section	Area	Notes
30	249.02-376	Platted location lots 35-37 recorded from found 1/8" above
31	31.2	
32	31.2	
33	31.2	
34	31.2	
35	31.2	
36	31.2	
37	31.2	
38	31.2	
39	31.2	