

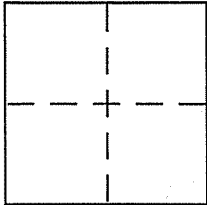
CORNER RECORD

Document Number 025-094-24,25

City of Corte Madera

County of _____, California

Brief Legal Description Lots 55, 56, 57 of 1 Maps 97



CORNER TYPE

Government Corner Control
Meander Property
Rancho Other
Date of Survey 2/24/06

COORDINATES (Optional)

N. _____
E. _____
Zone _____ NAD27 NAD83
NAD83 Epoch _____
Elev. _____
Vert. Datum: NGVD29 NAVD88
Meas. Units: Metric Imperial

Corner - Left as found Found and tagged Established Reestablished Rebuilt

Identification and type of corner found: Evidence used to identify or procedure used to establish or reestablish the corner:

See page 2 of 2

A description of the physical condition of the monument as found and as set or reset:

See page 2 of 2

SURVEYOR'S STATEMENT

This Corner Record was prepared by me or under my direction in conformance with

the Land Surveyor's Act on 3/3 06

Signed [Signature] P.L.S or R.C.E. No. 6784

COUNTY SURVEYOR'S STATEMENT

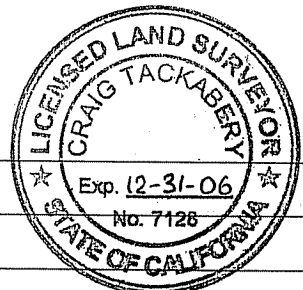
This Corner Record was received MAY 11, 2006

and examined and filed MAY 31, 2006

Signed [Signature] P.L.S or R.C.E. No. 7128

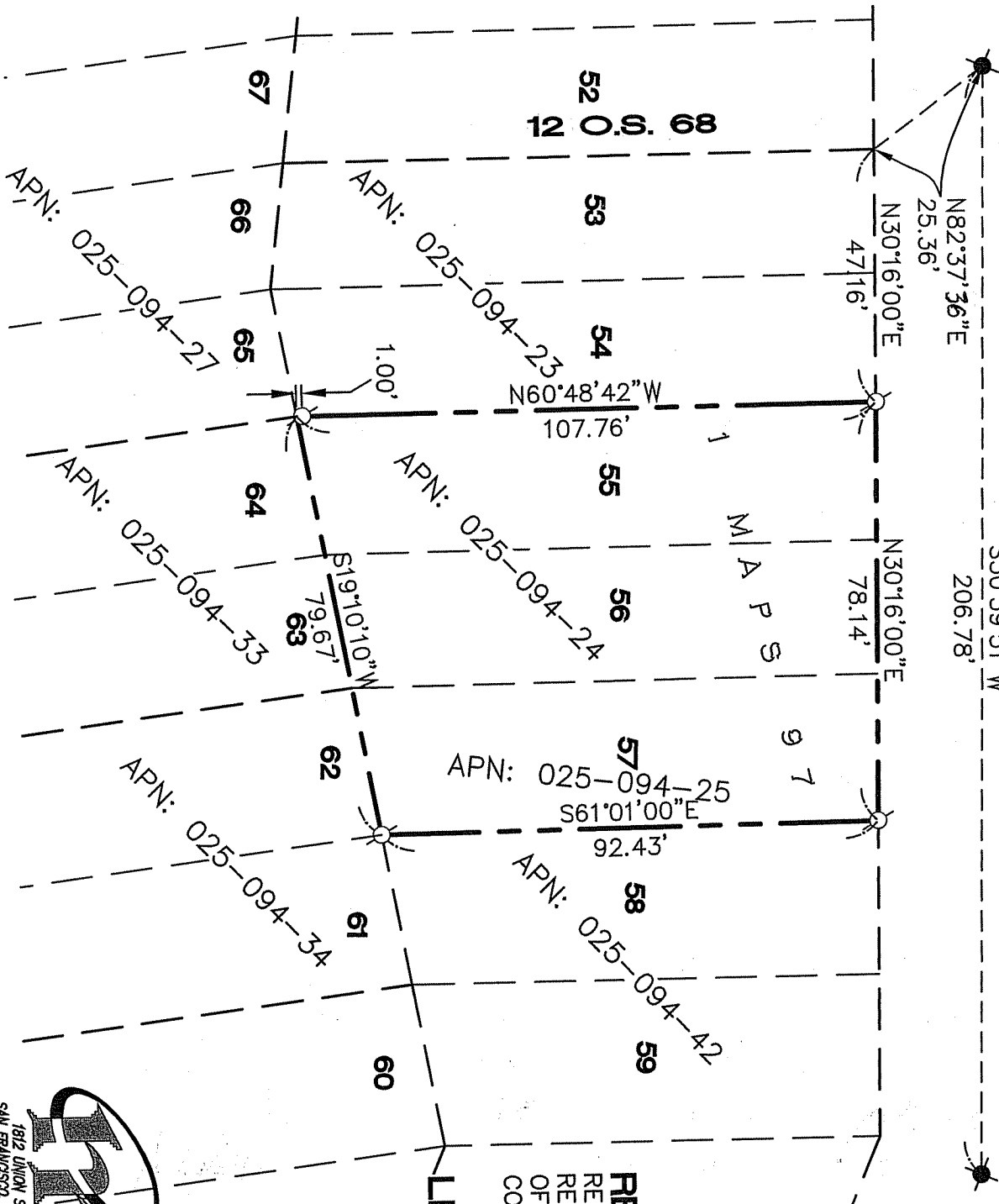
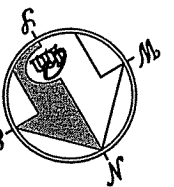
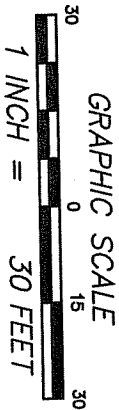
Title COUNTY SURVEYOR

County Surveyor's Comment _____



REDWOOD AVENUE
(40' WIDE)

S30°39'51"W
206.78'



REFERENCE
RECORD OF SURVEY..., FILED FOR
RECORD 6 MARCH 1975 IN BOOK 12
OF SURVEYS, AT PAGE 68, MARIN
COUNTY RECORDS.

LEGEND

- FOUND STANDARD CITY MONUMENT
- SET 5/8" REBAR WITH CAP, PLS 6784

NOTE
RECORD=MEASURED

CORNER RECORD

MERIDIAN SURVEYING, INC.
1812 UNION STREET
SAN FRANCISCO, CA 94123
(415) 440-4131
777 GRAND AVENUE, SUITE 202
SAN RAFAEL, CA 94901
(415) 456-6450

06025
info@meridiansurvey.com