



JERRICO ASSOCIATES

SUITE 27
77 MARK DRIVE
SAN RAFAEL, CA 94903

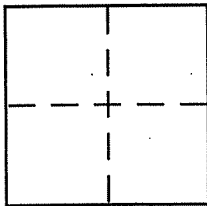
7395

CORNER RECORD

Document Number 25-094-19

City of Corte Madera County of Marin, California

Brief Legal Description Lot 48 Map of Colonist Tract 1 RM 97 \$ 12 ROS 68



CORNER TYPE

Government Corner Control
 Meander Property
 Rancho Other
 Date of Survey May 12, 2004

COORDINATES (Optional)

N. _____
 E. _____
 Zone _____ NAD27 NAD83
 NAD83 Epoch _____
 Elev. _____
 Vert. Datum: NGVD29 NAVD88
 Meas. Units: Metric Imperial

Corner - Left as found Found and tagged Established Reestablished Rebuilt

Identification and type of corner found: Evidence used to identify or procedure used to establish or reestablish the corner:
This is a re-set of a prior corner set by us, filed
as a corner record in August (10th) 2000 @ DPW
Marin County.

A description of the physical condition of the monument as found and as set or reset: _____

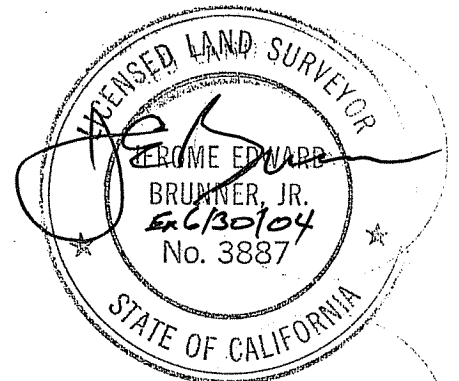
(B) Has been re-set as a rebar and cap LS 3887.

(A) (C) (D) Is not a part of this project.

SURVEYOR'S STATEMENT

This Corner Record was prepared by me or under my direction in conformance with the Land Surveyor's Act on May 12, 2004

Signed [Signature] P.L.S or R.C.E. No. LS 3887



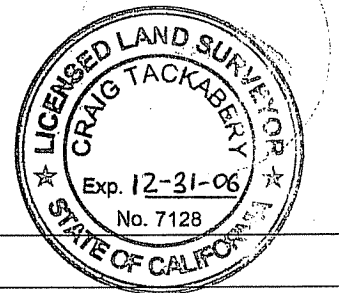
COUNTY SURVEYOR'S STATEMENT

This Corner Record was received JULY 21, 2004

and examined and filed AUG 11, 2004

Signed [Signature] P.L.S or R.C.E. No. 7128

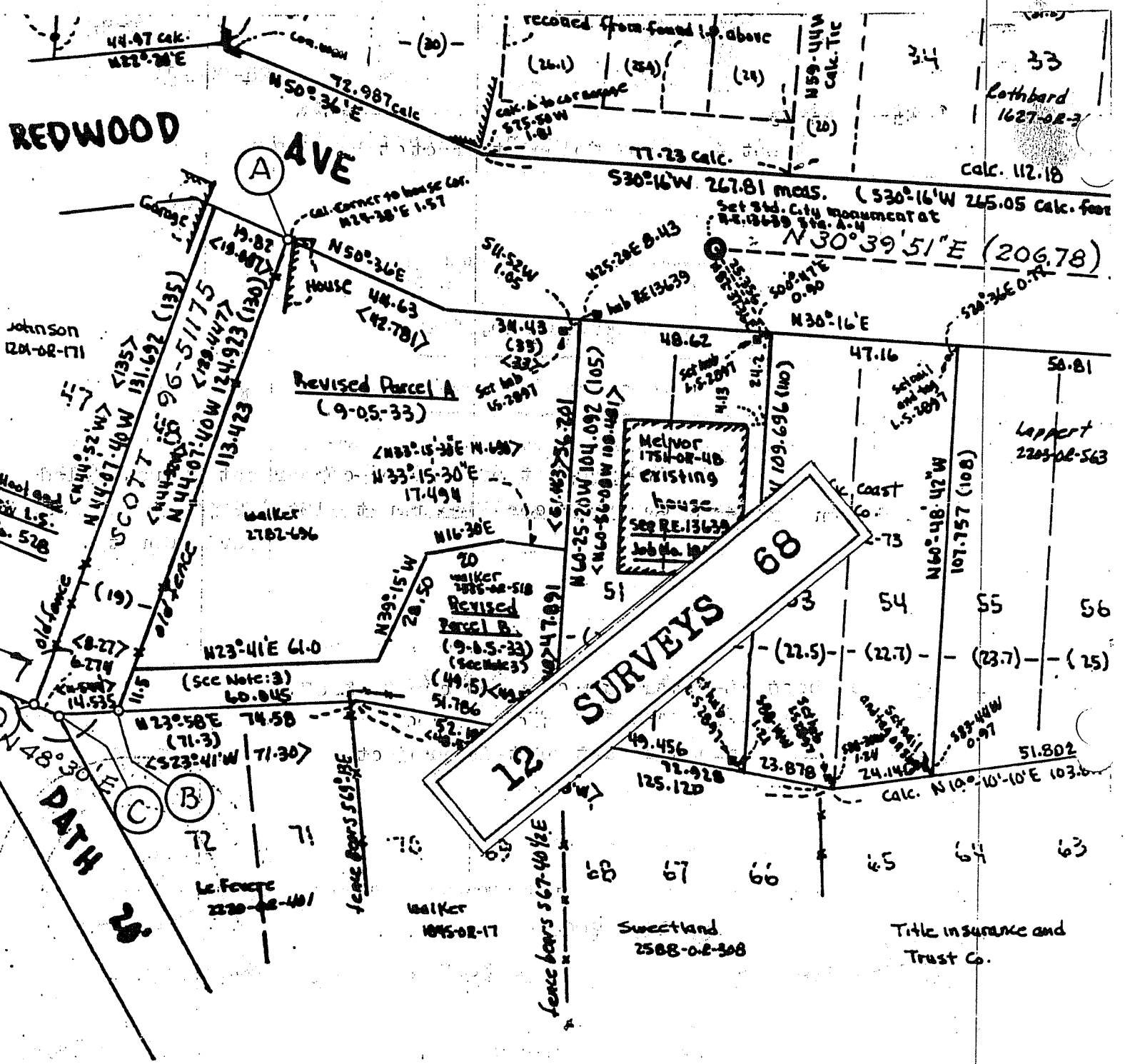
Title COUNTY SURVEYOR



County Surveyor's Comment _____

REDWOOD

AVE



NOTE: 1 The front and rear lines of Lots 57-51, Parcel A and B Revised and Lot 48 as shown hereon are computed alignments based on available data and have been used to proportion the 14 foot surplus found to exist between lines of occupation on N.E. 1/4 line of Lot 48 and existing survey by R.C.E. 3230 of N.E. 1/4 line of Lot 57

NOTE: 2 indicates 2x2 hub and iron pipe set by other surveyors, but not found on this survey
 indicates bearing and distance per 9-0.5-33; () data on 1-

MEYOR'S CERTIFICATE

RECORD'S CERTIFICATE

BASE OF BEARING