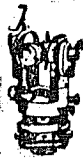


CORNER RECORD



JERRICO ASSOCIATES

SUITE 27  
77 MARK DRIVE  
SAN RAFAEL, CA 94903

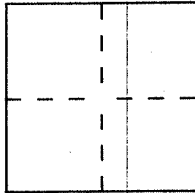
Document Number 25-094-19

7395 ✓

City of Corte Madera

County of Marin, California.

Brief Legal Description Lot 48 Map of Colonist Tract 1 RM 97



CORNER TYPE

Government Corner  Control   
Meander  Property   
Rancho  Other   
Date of Survey August 10, 2000

COORDINATES  
(Optional)

N. \_\_\_\_\_  
E. \_\_\_\_\_  
Zone \_\_\_\_\_ Datum \_\_\_\_\_  
Elev. \_\_\_\_\_

Corner — Left as found  Found and tagged  Established  Reestablished  Rebuilt

Identification and type of corner found: Evidence used to identify or procedure used to establish or reestablish the corner:

Found standard Monuments as shown on (12 Surveys

Said monumentation on Redwood Avenue by Roemer & Estes. ↗ 68 )

A description of the physical condition of the monument as found and as set or reset: \_\_\_\_\_

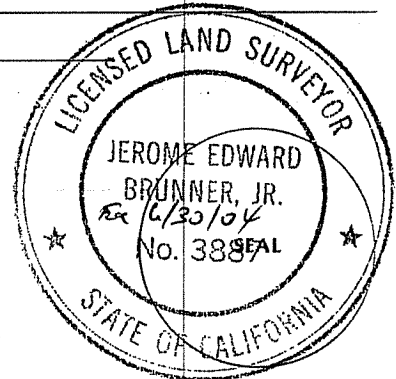
(A) (C) (D) Set #5 rebar and cap LS 3887.

(B) Set lead plug and tack in rock.

SURVEYOR'S STATEMENT

This Corner Record was prepared by me or under my direction in conformance with the Land Surveyors' Act on August 10 2000

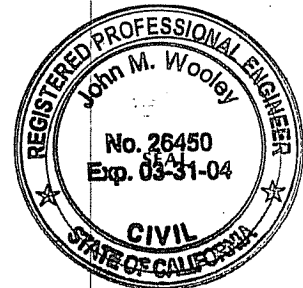
Signed [Signature] L.S. or R.C.E. Number LS 3887



COUNTY SURVEYOR'S STATEMENT

This Corner Record was received AUGUST 15, 2000 and examined and filed AUGUST 16, 2000.

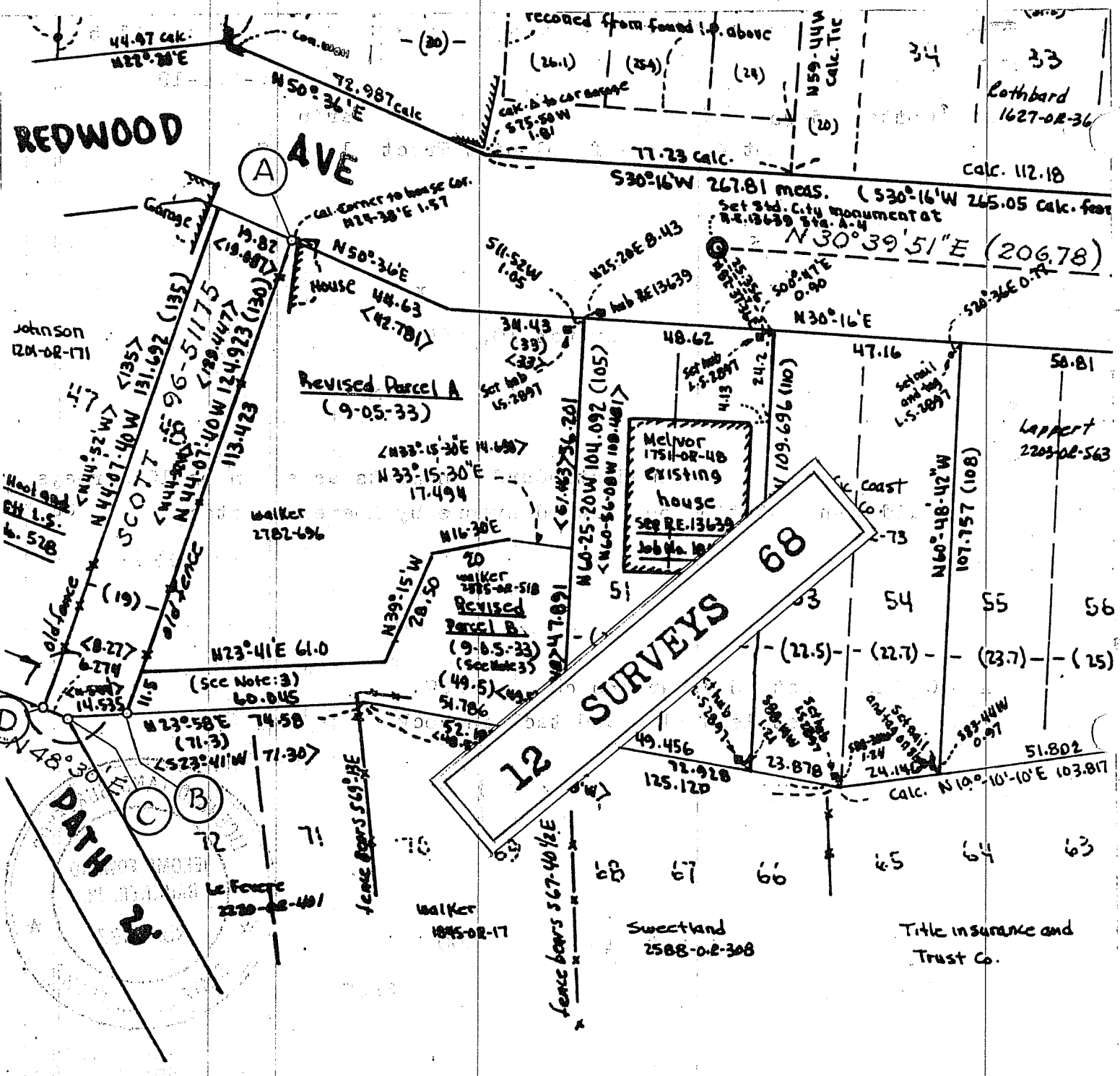
Signed [Signature] Title DEPUTY



County Surveyor's Comment \_\_\_\_\_

REDWOOD

AVE



**NOTE: 1** The front and rear lines of Lots 57-51, Parcel A and B Revised and Lot 48 as shown hereon are computed alignments based on available data and have been used to proportion the 14 foot surplus found to exist between lines of occupation on N.E. ly line of lot 48 and existing survey by R.C.E. 3230 of N.E. ly line of Lot 57

**NOTE: 2**  $\odot$  indicates 2x2 hub and iron pipe set by other surveyors, but not found on this survey  
 $\langle \rangle$  indicates bearing and distance per 9-0-5-33; ( ) data on 1-

MEYOR'S CERTIFICATE

RECORDED'S CERTIFICATE

BASIS OF BEARING