

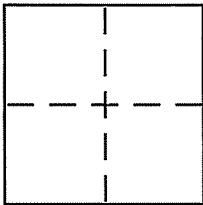
# CORNER RECORD

Document Number APN. 025-082-05

City of CORTE MADERA

County of MARIN, California

Brief Legal Description PCL. 'B', "FREDRICK GROVE", 13 RM 85



### CORNER TYPE

Government Corner  Control   
 Meander  Property   
 Rancho  Other   
 Date of Survey \_\_\_\_\_

### COORDINATES (Optional)

N. \_\_\_\_\_  
 E. \_\_\_\_\_  
 Zone \_\_\_\_\_ NAD27  NAD83   
 NAD83 Epoch \_\_\_\_\_  
 Elev. \_\_\_\_\_  
 Vert. Datum: NGVD29  NAVD88   
 Meas. Units: Metric  Imperial

Corner - Left as found  Found and tagged  Established  Reestablished  Rebuilt

Identification and type of corner found: Evidence used to identify or procedure used to establish or reestablish the corner:

FOUND STANDARD STREET WELL MONUMENT PER 13 RM 85 AS INDICATED, FOUND 3/4" IRON PIPE AT CORNER PCL. 'B' AS INDICATED. ESTABLISHED CORNERS SHOWN HEREON BY FIELD SURVEY BASE ON RECORD INFORMATION PER 13 RM 85.

A description of the physical condition of the monument as found and as set or reset:

FOUND MONUMENTS AS INDICATED HEREON IN RECORD POSITION. FOUND CONCRETE NAIL IN MONUMENT POSITION (REMOVED OR BURIED). SET 1/2" PINS WITH CAP "PLS 6234" AS NOTED.

### SURVEYOR'S STATEMENT

This Corner Record was prepared by me or under my direction in conformance with the Land Surveyor's Act on JANUARY 20, 2004

Signed [Signature] P.L.S or R.C.E. No. PLS 6234

### COUNTY SURVEYOR'S STATEMENT

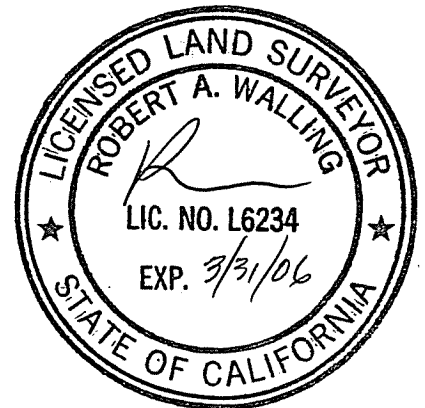
This Corner Record was received JANUARY 26, 2004

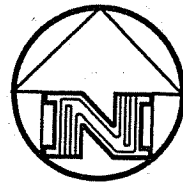
and examined and filed FEBRUARY 6, 2004

Signed [Signature] P.L.S or R.C.E. No. 7128

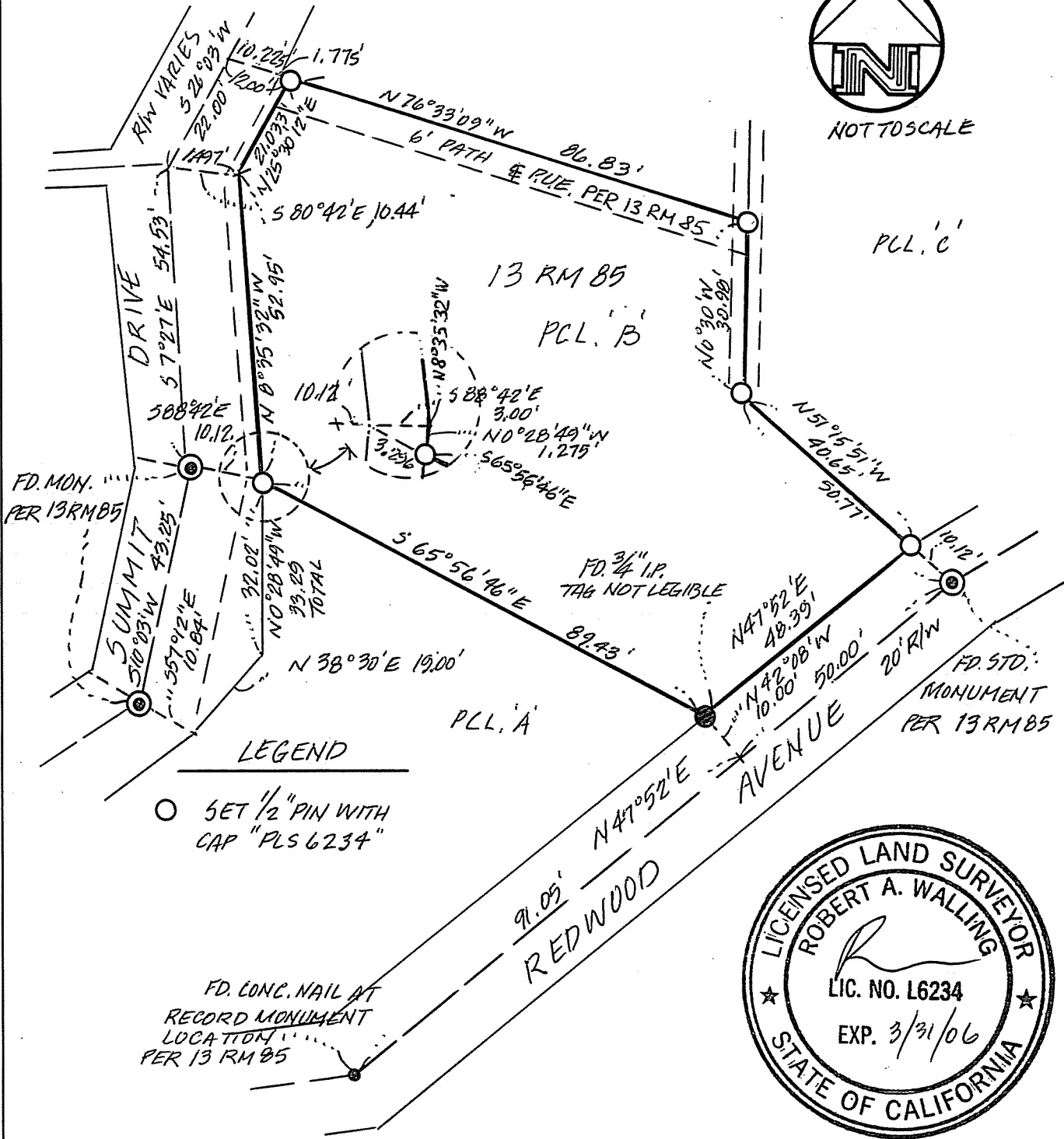
Title COUNTY SURVEYOR

County Surveyor's Comment \_\_\_\_\_





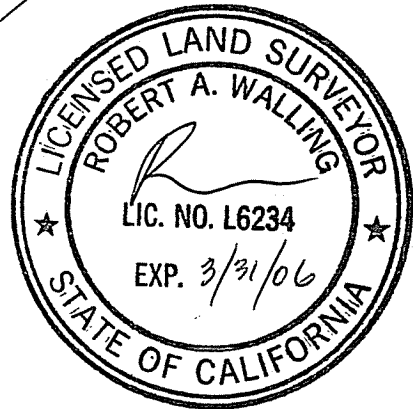
NOT TO SCALE



LEGEND

○ SET 1/2" PIN WITH CAP "PLS 6234"

FD. CONC. NAIL AT RECORD MONUMENT LOCATION PER 13 RM 85



SURVEY PLAT

LANDS OF SIEN

PLL. 'B', "FREDRICK GROVE" BK. 13 RM 85  
CORTE MADERA, MARIN CO., CALIFORNIA



**BOB WALLING TECHNICAL SERVICES**  
P.O. Box 1346 • Glen Ellen, CA 95442  
(707) 938-1593 (415) 382-1593

JN.104-03

1/22/04