

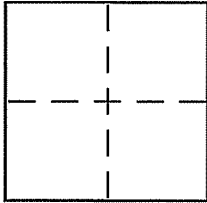
CORNER RECORD

Document Number APN 025-081-027&09

City of CORTE MADERA

County of MARIN, California

Brief Legal Description LOT 156-159 AMENDED MAP CORTE MADERA WOODS 4 R.M. 16



CORNER TYPE

Government Corner Control
Meander Property
Rancho Other
Date of Survey _____

COORDINATES (Optional)

N. _____
E. _____
Zone _____ NAD27 NAD83
NAD83 Epoch _____
Elev. _____
Vert. Datum: NGVD29 NAVD88
Meas. Units: Metric Imperial

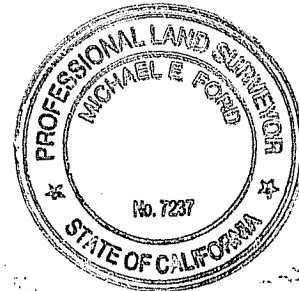
Corner - Left as found Found and tagged Established Reestablished Rebuilt

Identification and type of corner found: Evidence used to identify or procedure used to establish or reestablish the corner:
FOUND MONUMENTS PER RECORD OF SURVEY 28 O.S. 80

A description of the physical condition of the monument as found and as set or reset: _____
SET TWO 1/2" I.P., LS7237 ON SOUTH LINE OF RECORD OF SURVEY 28 O.S. 80
(SEE DIAGRAM)

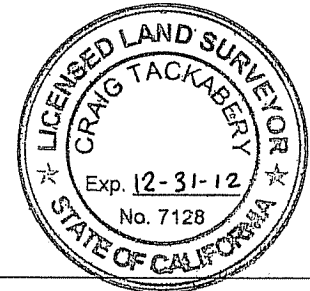
SURVEYOR'S STATEMENT

This Corner Record was prepared by me or under my direction in conformance with
the Land Surveyor's Act on JULY 20 2012
Signed Michael E Ford P.L.S or R.C.E. No. 7237



COUNTY SURVEYOR'S STATEMENT

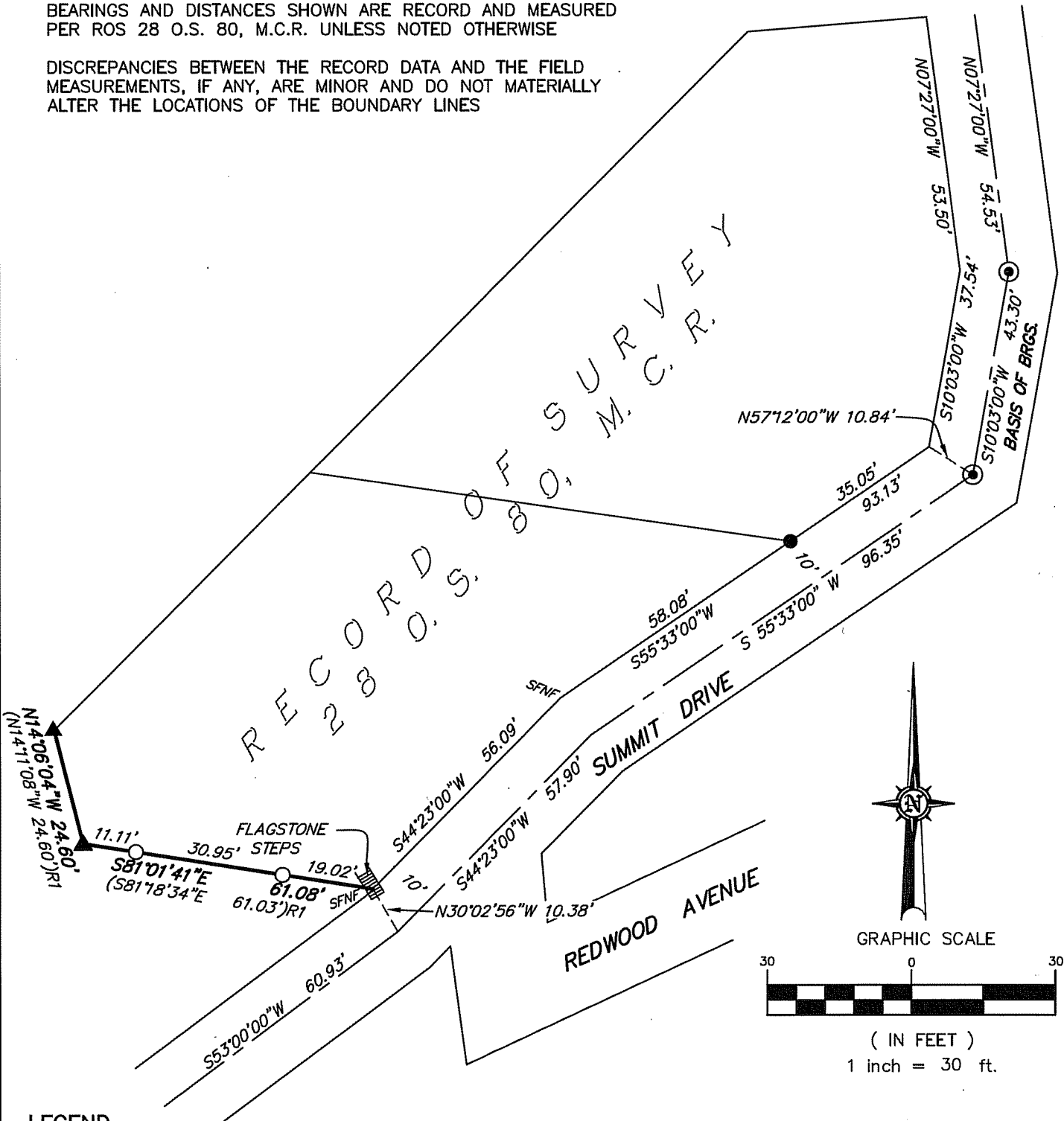
This Corner Record was received AUGUST 6, 2012
and examined and filed AUGUST 20, 2012
Signed _____ P.L.S or R.C.E. No. 7128
Title COUNTY SURVEYOR



County Surveyor's Comment _____

NOTES:
 BEARINGS AND DISTANCES SHOWN ARE RECORD AND MEASURED
 PER ROS 28 O.S. 80, M.C.R. UNLESS NOTED OTHERWISE

DISCREPANCIES BETWEEN THE RECORD DATA AND THE FIELD
 MEASUREMENTS, IF ANY, ARE MINOR AND DO NOT MATERIALLY
 ALTER THE LOCATIONS OF THE BOUNDARY LINES



LEGEND

- FOUND STD STREET MONUMENT PER RECORD
- SET 1/2" IRON PIPE LS7237
- FOUND 1/2" REBAR LS6234 (MAP CALL FOR 1/2" IRON PIPE)
- ▲ FOUND NAIL IN CONC W/BRASS TAG LS6234
- SFNF RECORD MONUMENT SEARCH FOR NOT FOUND
- R1 ROS 28 OS 80

BOUNDARY LINE RETRACEMENT
 SOUTHERLY LINE
 RECORD OF SURVEY 28 MAPS 80
 MARIN COUNTY RECORDS

michael ford inc.
land surveying

2300 bethards drive, suite J
 santa rosa - california 95405
 p 707.542.8513 - f 707.542.1825

www.michaelfordinc.com

JOB #122195

DATE: JULY 20, 2012