

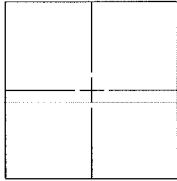
CORNER RECORD

Document Number _____

City of CORTE MADERA

County of MARIN, California

Brief Legal Description LOT 21 AS SHOWN ON RECORD OF SURVEY FOR LAND OF FRAZIER FILED IN BOOK 2000, AT PAGE 200, OFFICIAL RECORDS MARIN COUNTY.



CORNER TYPE

COORDINATES (Optional)

Government Corner Control
Meander Property
Rancho Other
Date of Survey 9/16/2013

N. _____
E. _____
Zone _____ NAD27 NAD83
NAD83 Epoch _____
Elev. _____
Vet. Datum: NGVD29 NAVD88
Meas. Units: Metric Imperial

Corner - Left as found Found and tagged Established Reestablished Rebuilt

Identification and type of corner found: Evidence used to identify or procedure used to establish or reestablish the corner:
FOUND LEAD PLUG WITH TAG LS 5379 AND BRASS NAIL ON CURB AT PROJECTED SOUTHWEST AND SOUTHEAST CORNERS OF LOT 21 AS SHOWN ON RECORD OF SURVEY FOR LAND OF FRAZIER FILED IN BOOK 2000 OF MAPS AT PAGE 200, OFFICIAL RECORDS MARIN COUNTY. FOUND REBAR AND CAP LS 5379 AT NORTHWEST CORNER OF SAID LOT PER SAID RECORD OF SURVEY. USED FOUND MONUMENTS TO RESET NORTHEAST CORNER OF SAID LOT.

A description of the physical condition of the monument as found and as set or reset: SET NAIL AND TAG LS 8593 IN CONCRETE BLOCK WALL AT NORTHEAST CORNER OF LOT 21.

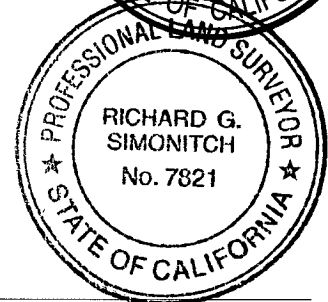
SURVEYOR'S STATEMENT

This Corner Record was prepared by me or under my direction in conformance with the Land Surveyor's Act on SEPTEMBER 24 20 13
Signed [Signature] P.L.S. or R.C.E. No. _____ L.S. # 8593



COUNTY SURVEYOR'S STATEMENT

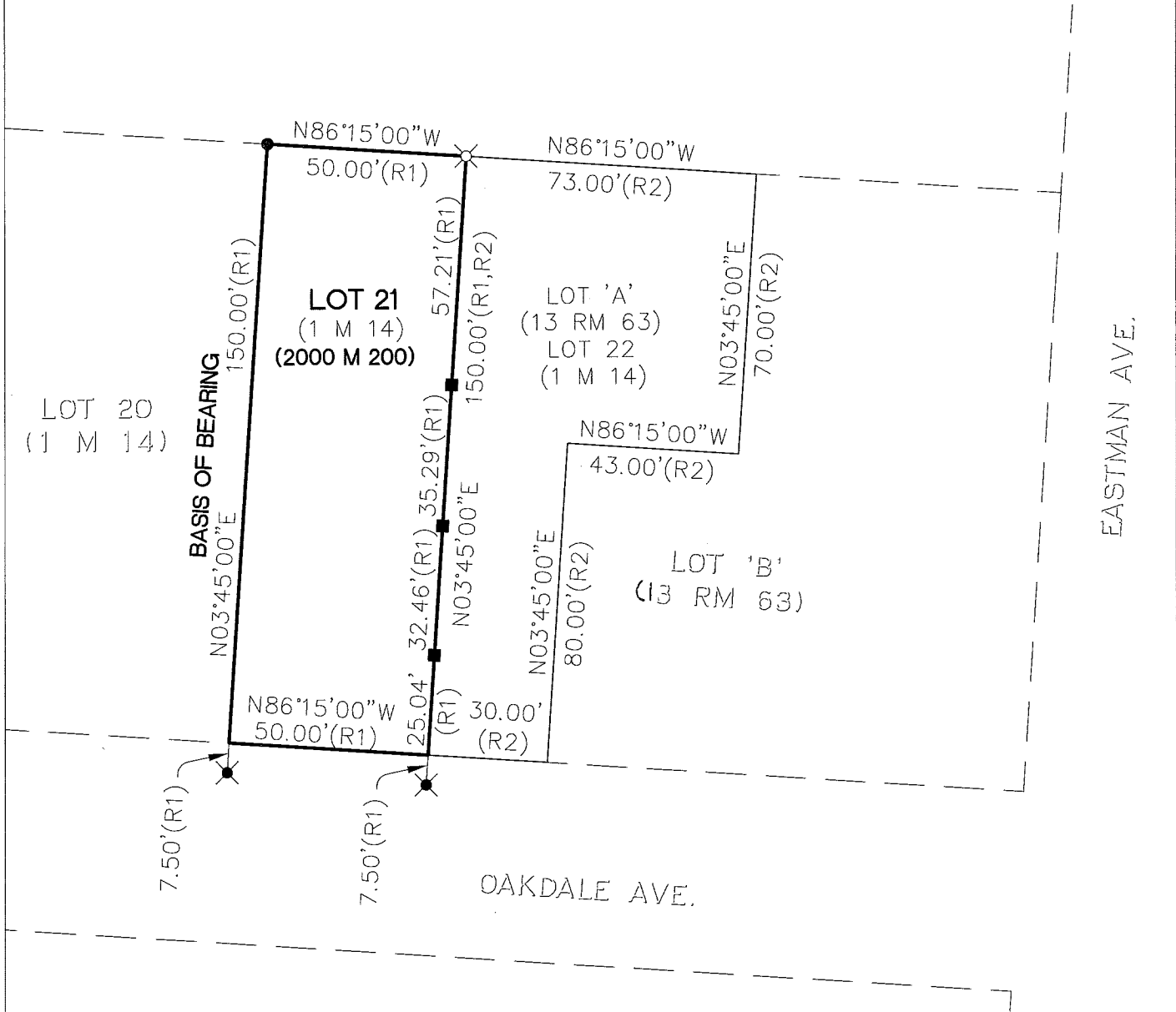
This Corner Record was received SEPTEMBER 30, 20 13
and examined and filed NOVEMBER 9th 20 13
Signed [Signature] P.L.S. or R.C.E. No. 7821
Title DEPUTY COUNTY SURVEYOR



County Surveyor's Comment: _____

BASIS OF BEARING

N3°45'E TAKEN BETWEEN FOUND MONUMENTS AT NORTHWEST CORNER OF LOT 21 AND EXTENSION OF SOUTHWEST CORNER OF LOT 21 AS SHOWN ON RECORD OF SURVEY FILED IN BOOK 2000 AT PAGE 200, OFFICIAL RECORDS MARIN COUNTY.

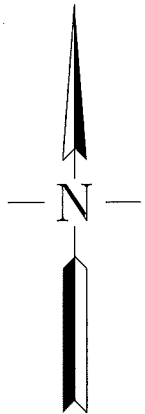


LEGEND

- FOUND 1/2" REBAR AND CAP LS 5379
- ⊗ FOUND LEAD PLUG, TAG LS 8593 AND BRASS NAIL IN CURB
- ⊗ SET NAIL AND TAG LS 8593
- SEARCH FOR NOTHING FOUND

REFERENCES

- R1 RECORD OF SURVEY LAND OF FRAZIER, BOOK 2000 OF MAPS, PAGE 200, OFFICIAL RECORDS MARIN COUNTY.
- R2 MAP OF EASTMAN OAKS, VOLUME 13 OF MAPS, PAGE 63 OFFICIAL RECORDS MARIN COUNTY.



SCALE: 1"=40'