

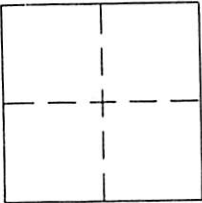
# CORNER RECORD

Document Number 025-042-05

City of CORTE MADERA

County of MARIN, California

Brief Legal Description LOT 2 BLOCK 3 AS SHOWN ON THE MAP ENTITLED "MAP OF McCUE & PIXLEY TRACT" FILED MAY 15, 1888 IN VOL. 1 OF MAPS AT PAGE 14 MARIN COUNTY RECORDS



### CORNER TYPE

Government Corner  Control   
Meander  Property   
Rancho  Other   
Date of Survey MAY 12, 2014

### COORDINATES (Optional)

N. \_\_\_\_\_  
E. \_\_\_\_\_  
Zone \_\_\_\_\_ NAD27  NAD83   
NAD83 Epoch \_\_\_\_\_  
Elev. \_\_\_\_\_  
Vert. Datum: NGVD29  NAVD88   
Meas. Units: Metric  Imperial

Corner - Left as found  Found and tagged  Established  Reestablished  Rebuilt

Identification and type of corner found: Evidence used to identify or procedure used to establish or reestablish the corner:  
SEE PAGE 2

A description of the physical condition of the monument as found and as set or reset:  
SEE PAGE 2

### SURVEYOR'S STATEMENT

This Corner Record was prepared by me or under my direction in conformance with the Land Surveyor's Act on 8/22 2016

Signed [Signature] P.L.S. or R.C.E. No. 6784



### COUNTY SURVEYOR'S STATEMENT

This Corner Record was received FEBRUARY 13, 2017

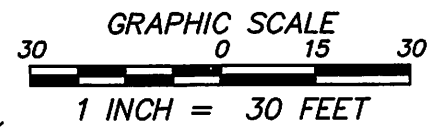
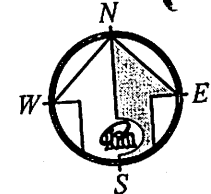
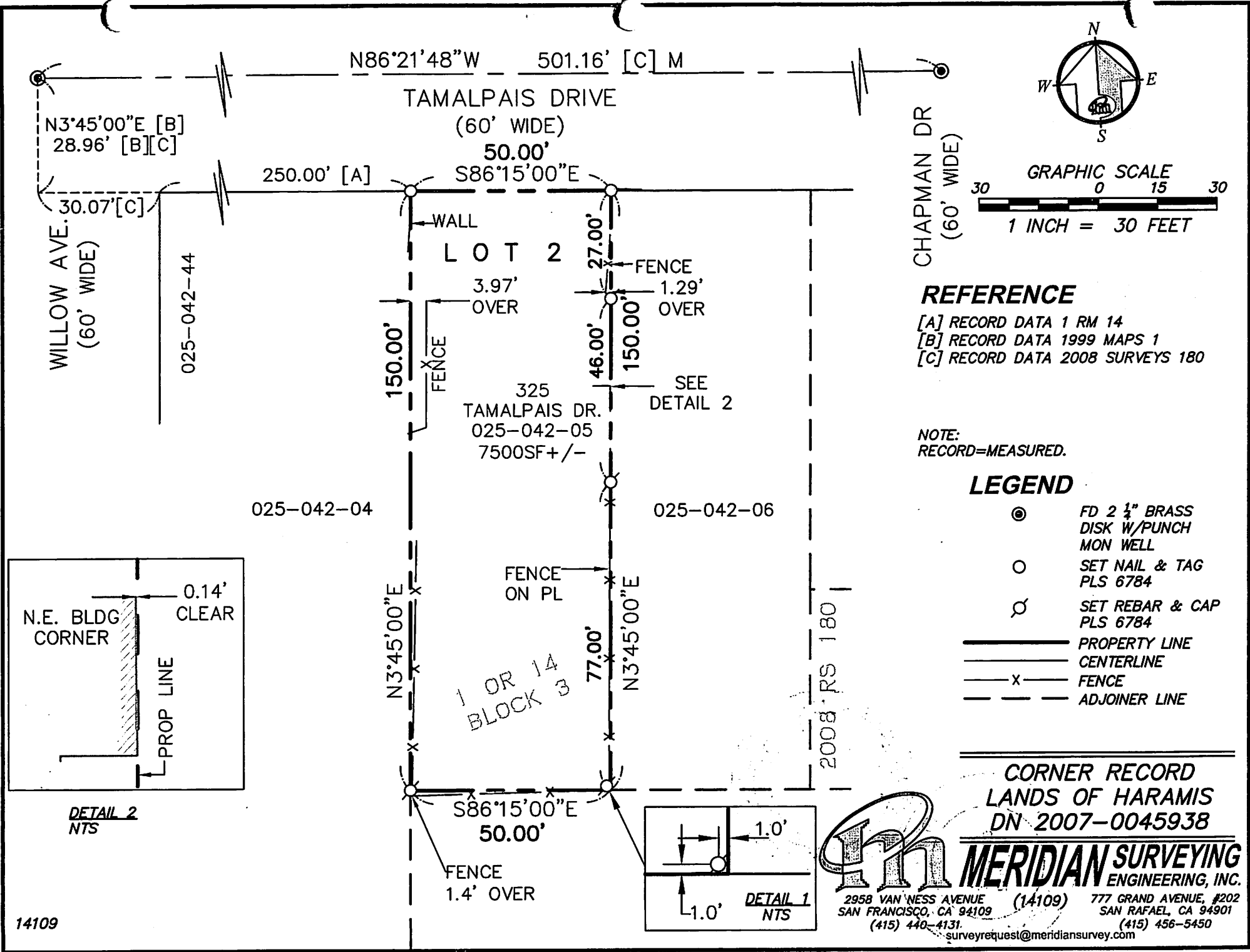
and examined and filed JUNE 14, 2017

Signed [Signature] P.L.S. or R.C.E. No. 9292

Title DEPUTY C.S.



County Surveyor's Comment IT IS THE OPINION OF THE COUNTY SURVEYOR AND/OR DEPUTIES THAT A RECORD OF SURVEY IS REQUIRED IN ACCORDANCE WITH PROFESSIONAL LAND SURVEYOR'S ACT SECTION 8762(b)(x)



CHAPMAN DR  
(60' WIDE)

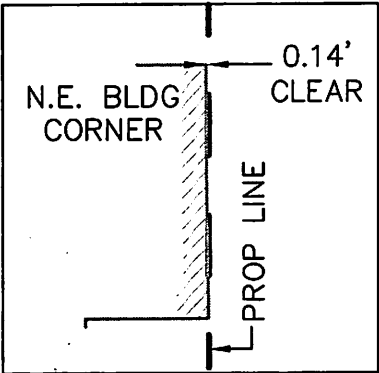
**REFERENCE**

- [A] RECORD DATA 1 RM 14
- [B] RECORD DATA 1999 MAPS 1
- [C] RECORD DATA 2008 SURVEYS 180

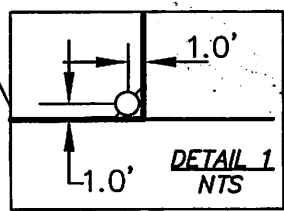
NOTE:  
RECORD=MEASURED.

**LEGEND**

- ⊙ FD 2 1/2" BRASS DISK W/PUNCH MON WELL
- SET NAIL & TAG PLS 6784
- ⊗ SET REBAR & CAP PLS 6784
- PROPERTY LINE
- CENTERLINE
- x- FENCE
- - - ADJOINER LINE



DETAIL 2  
NTS



DETAIL 1  
NTS

CORNER RECORD  
LANDS OF HARAMIS  
DN 2007-0045938



**MERIDIAN SURVEYING**  
ENGINEERING, INC.

2958 VAN NESS AVENUE (14109) 777 GRAND AVENUE, #202  
SAN FRANCISCO, CA 94109 SAN RAFAEL, CA 94901  
(415) 440-4131 (415) 456-5450  
surveyrequest@meridiansurvey.com