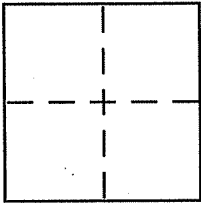


CORNER RECORD

Document Number 025-041-04
County of Marin, California

City of Corte Madera
Brief Legal Description Portion Lot 8, 1/M/14



CORNER TYPE

Government Corner Control
Meander Property
Rancho Other
Date of Survey 12/

COORDINATES (Optional)

N. _____
E. _____
Zone _____ NAD27 NAD83
NAD83 Epoch _____
Elev. _____
Vert. Datum: NGVD29 NAVD88
Meas. Units: Metric Imperial

Corner - Left as found Found and tagged Established Reestablished Rebuilt

Identification and type of corner found: Evidence used to identify or procedure used to establish or reestablish the corner:

See page 2 of 2

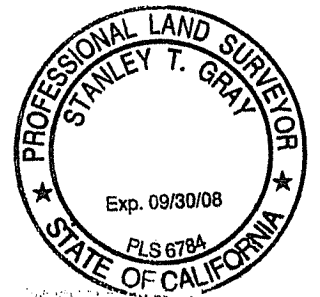
A description of the physical condition of the monument as found and as set or reset:

See page 2 of 2

SURVEYOR'S STATEMENT

This Corner Record was prepared by me or under my direction in conformance with the Land Surveyor's Act on 1/16/08

Signed [Signature] P.L.S or R.C.E. No. 6784



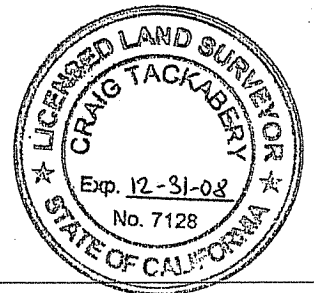
COUNTY SURVEYOR'S STATEMENT

This Corner Record was received JANUARY 30, 2008

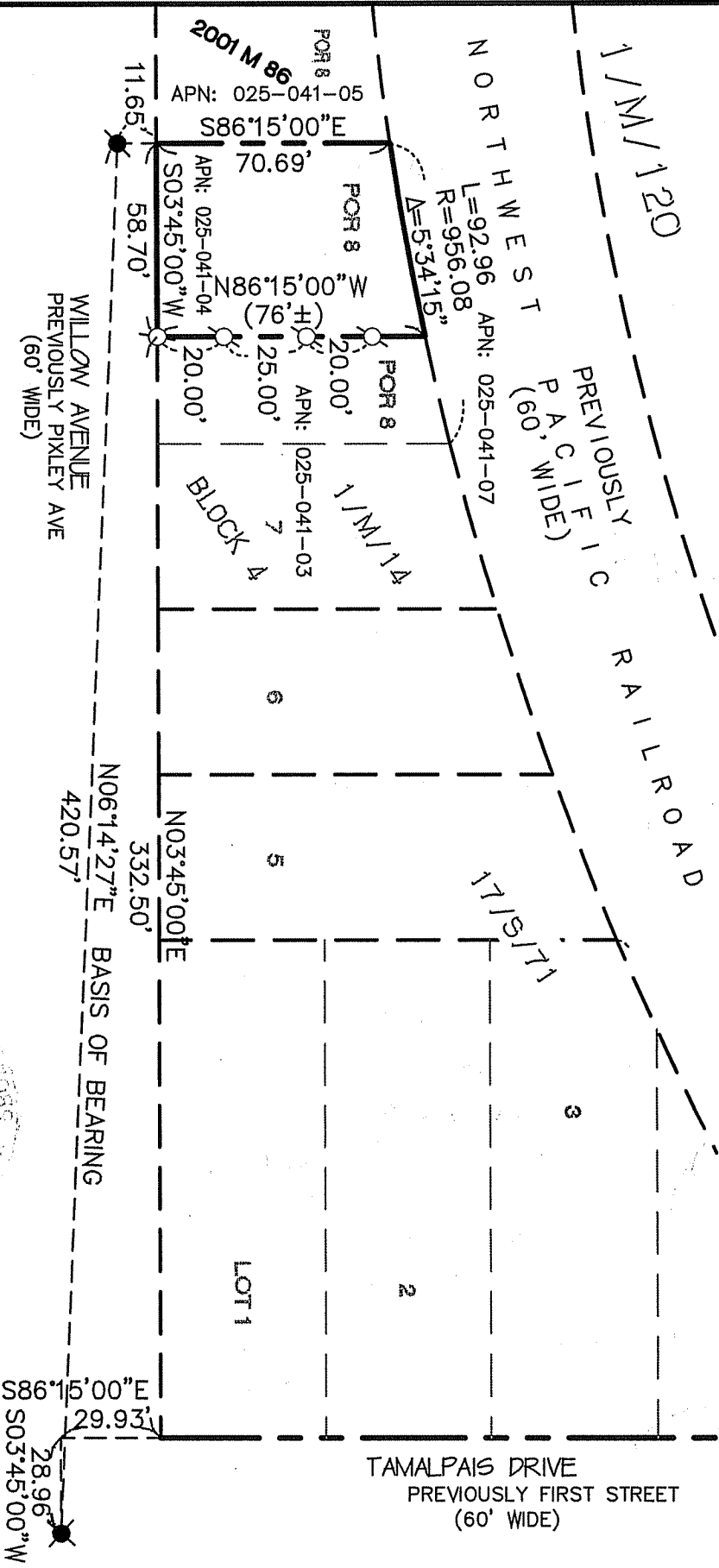
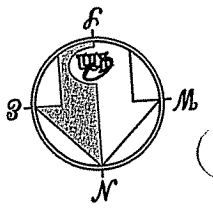
and examined and filed JANUARY 31, 2008

Signed [Signature] P.L.S or R.C.E. No. 7128

Title COUNTY SURVEYOR



County Surveyor's Comment _____



NOTE
RECORD=MEASURED

REFERENCE

[A] RECORD OF SURVEY, LANDS OF VAUGHAN/MACE, FILED 18 MAY 2001 IN BOOK 2001 OF MAPS, AT PAGE 86, MARIN COUNTY RECORDS.

LEGEND

- FOUND CITY MONUMENT PER [A]
- FOUND REBAR & CAP, PLS 6784 PER [A]
- SET 5/8" REBAR WITH CAP, PLS 6784

CORNER RECORD

MERIDIAN SURVEYING & ENGINEERING, INC.

1812 UNION STREET
SAN FRANCISCO, CA 94123
(415) 440-4131

777 GRAND AVENUE, SUITE 202
SAN RAFAEL, CA 94901
(415) 456-6450

07116
info@meridiansurvey.com