

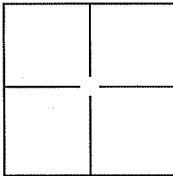
CORNER RECORD

Document Number A.P.N. 025-036-32

City of Corte Madera

County of Marin, California

Brief Legal Description Lands of Pearson and Doherty, 290 Corte Madera Ave., DN 2007-0069452.



CORNER TYPE

Government Corner Control
 Meander Property
 Rancho Other

Date of Survey 27 April 2012

COORDINATES(Optional)

N. _____
 E. _____
 Zone _____ NAD27 NAD83
 NAD83 Epoch _____
 Elev. _____
 Vert. Datum: NGVD29 NADV88
 Meas. Units: Metric Imperial

Corner - Left as found Found and tagged Established Reestablished Rebuilt

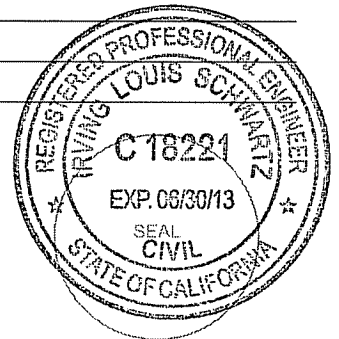
Identification and type of corner found: Evidence used to identify or procedure used to establish or reestablish the corner:
Found Nail and Tag, "L.S. 2535", in Concrete Footing and Found 3/4" Iron Pipe, No Tag,
per 2001 OS 226, See Exhibit "B".

A description of the physical condition of the monument as found and as set or reset:
Set Angle Point on Southerly Line, See Exhibit "A".

SURVEYOR'S STATEMENT

This Corner Record was prepared by me or under my direction in conformance with
 the Land Surveyor's Act on JUNE 6, 2012.

Signed [Signature] P.L.S. or R.C.E. No.: 18221



COUNTY SURVEYOR'S STATEMENT

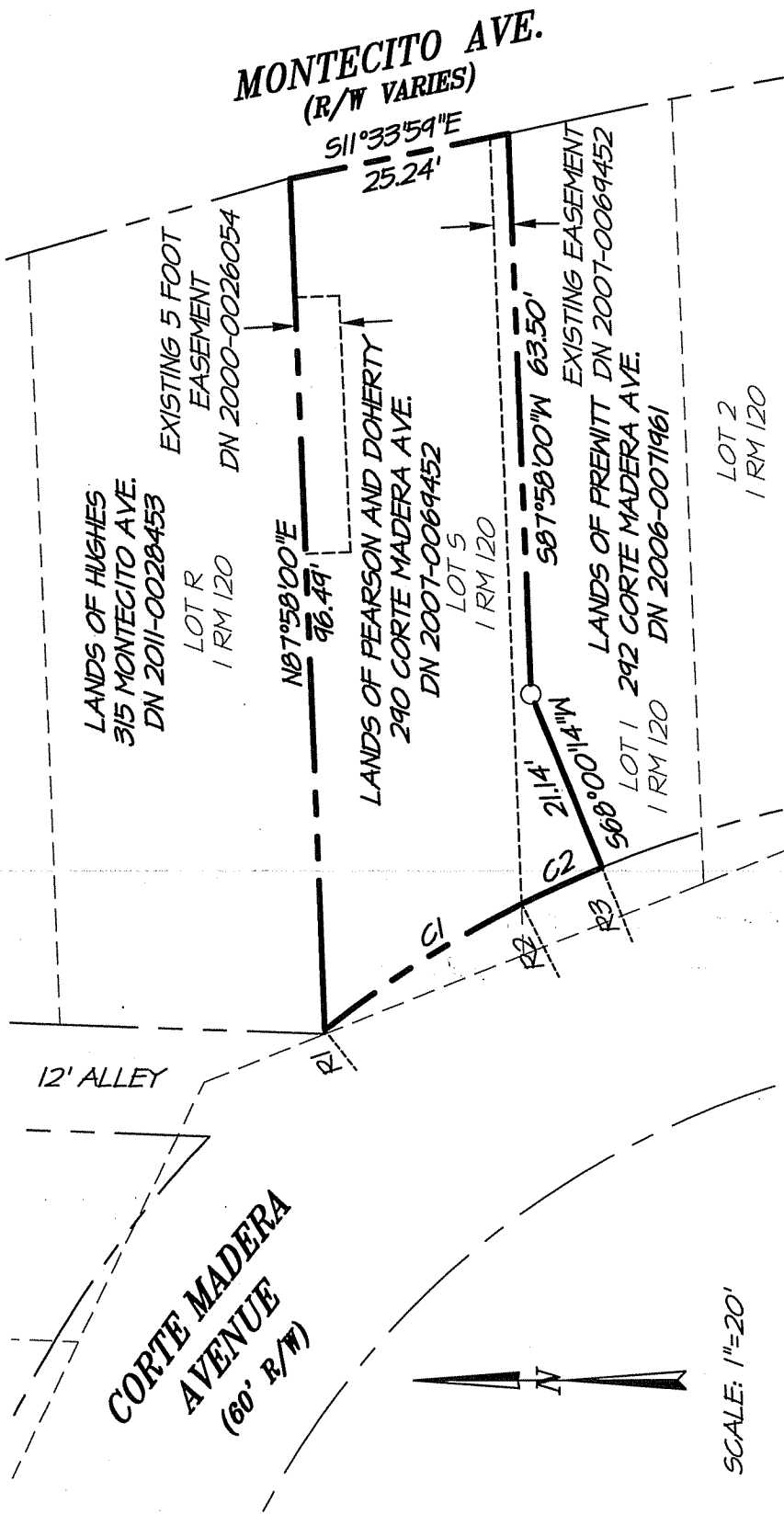
This Corner Record was received JUNE 8, 2012 and examined
 and filed JUNE 14, 2012.

Signed [Signature] P.L.S. or R.C.E. No.: 7128

Title COUNTY SURVEYOR

County Surveyor's Comment _____





RADIAL TABLE	
LINE	BEARING
R1	N51°35'28"E
R2	S63°19'25"W
R3	N67°43'13"E

CURVE TABLE			
LINE	LENGTH	RADIUS	DELTA
C1	26.62'	130.00	11°43'57"
C2	9.98'	130.00	04°23'48"

EXHIBIT A

ILS ASSOCIATES, INC.®
 CIVIL ENGINEERING AND LAND SURVEYING
 79 CALIFORNIA SUITE A NOVATO, CA 94945-8200 FAX (415)863-2783

A.P.N. 025-036-32

LEGEND
 ○ SET 3/4" IRON PIPE & YELLOW CAP "R.C.E. 18221"

NOTE:
 ALL DIMENSIONS AND BEARINGS SHOWN HEREON ARE PER 2001 MAPS 226.

DATE: 06/04/2012
 FILE: 8654CR.dwg
 PAGE 2 OF 3

SCALE: 1"=20'

