

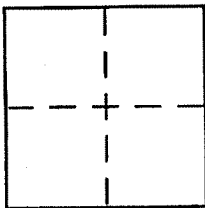
**CORNER RECORD**

Document Number APN 025-021-03

City of CORTE MADERA

County of MARIN, California

Brief Legal Description LOTS 16 & 17 OF 4/M/16 PER 12/PM/62, ORMC



**CORNER TYPE**

Government Corner  Control   
Meander  Property   
Rancho  Other   
Date of Survey \_\_\_\_\_

**COORDINATES (Optional)**

N. \_\_\_\_\_  
E. \_\_\_\_\_  
Zone \_\_\_\_\_ NAD27  NAD83   
NAD83 Epoch \_\_\_\_\_  
Elev. \_\_\_\_\_  
Vert. Datum: NGVD29  NAVD88   
Meas. Units: Metric  Imperial

Corner - Left as found  Found and tagged  Established  Reestablished  Rebuilt

Identification and type of corner found: Evidence used to identify or procedure used to establish or reestablish the corner:

SEE PAGE 2

A description of the physical condition of the monument as found and as set or reset:

SEE PAGE 2

**SURVEYOR'S STATEMENT**

This Corner Record was prepared by me or under my direction in conformance with the Land Surveyor's Act on JUNE 05 2002

Signed [Signature] P.L.S or R.C.E. No. 6784



**COUNTY SURVEYOR'S STATEMENT**

This Corner Record was received JULY 12, 2002

and examined and filed JULY 16, 2002

Signed [Signature] P.L.S or R.C.E. No. 7128

Title DEPUTY



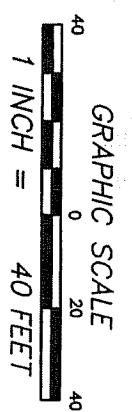
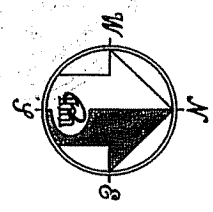
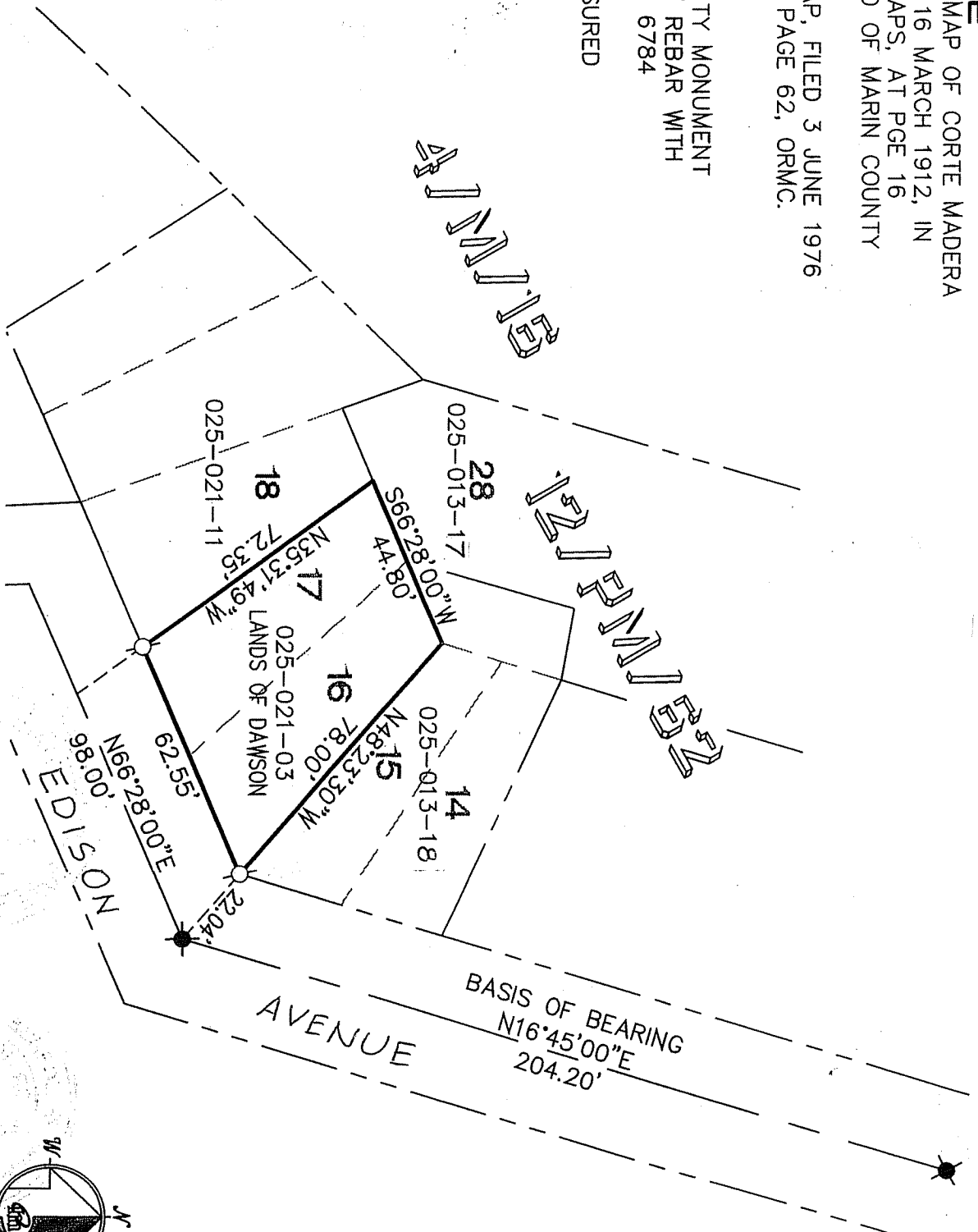
County Surveyor's Comment \_\_\_\_\_

**REFERENCE**

[A] "AMENDED MAP OF CORTE MADERA WOODS..." FILED 16 MARCH 1912, IN VOLUME 4 OF MAPS, AT PGE 16 OFFICIAL RECORD OF MARIN COUNTY (ORMC).  
 [B] PARCEL MAP, FILED 3 JUNE 1976 IN BOOK 12, AT PAGE 62, ORM.C.

**LEGEND**

FOUND CITY MONUMENT  
 SET 5/8" REBAR WITH  
 CAP, PLS 6784  
 NOTE  
 RECORD=MEASURED



02045 DAWSON

CORNER RECORD

**MERIDIAN SURVEYING, INC.**  
 100 DRAKES LANDING RD, #164  
 GREENSBORO, CA 94123  
 (415) 461-1241  
 info@meridiansurveying.com

1812 LEMON STREET  
 SAN RAFAEL, CA 94137  
 (415) 460-4131