

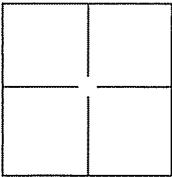
# CORNER RECORD

Document Number A.P.N. 025-012-09

City of Corte Madera

County of Marin, California

Brief Legal Description Lands of Leswing, 30 Crescent Road, 2001 OS 212.



### CORNER TYPE

Government Corner  Control   
 Meander  Property   
 Rancho  Other

Date of Survey 22 February 2011

### COORDINATES(Optional)

N. \_\_\_\_\_  
 E. \_\_\_\_\_  
 Zone \_\_\_\_\_ NAD27  NAD83   
 NAD83 Epoch \_\_\_\_\_  
 Elev. \_\_\_\_\_  
 Vert. Datum: NGVD29  NADV88   
 Meas. Units: Metric  Imperial

Corner - Left as found  Found and tagged  Established  Reestablished  Rebuilt

Identification and type of corner found: Evidence used to identify or procedure used to establish or reestablish the corner:

Found 5/8" Rebar with 1-1/2" Aluminum Cap (2) per 2001 OS 212.

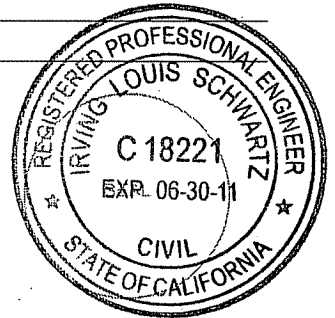
A description of the physical condition of the monument as found and as set or reset: \_\_\_\_\_

Set NW, NE, SE, and SW corners (4 corners) on Lands of Leswing, 2001 OS 212, See Exhibit "A".

### SURVEYOR'S STATEMENT

This Corner Record was prepared by me or under my direction in conformance with the Land Surveyor's Act on FEBRUARY 24, 2011.

Signed [Signature] P.L.S. or R.C.E. No.: 18221



### COUNTY SURVEYOR'S STATEMENT

This Corner Record was received FEBRUARY 28, 2011 and examined and filed APRIL 4, 2011.

Signed [Signature] P.L.S. or R.C.E. No.: 7128

Title COUNTY SURVEYOR

County Surveyor's Comment \_\_\_\_\_





**ILS ASSOCIATES, INC.®**  
 Civil Engineering & Land Surveying  
 79 Galli Drive, Suite A  
 Novato, Ca 94949-5717  
 (415)883-9200 FAX (415)883-2763

DRAWN:

SJM

JOB NO:

8536

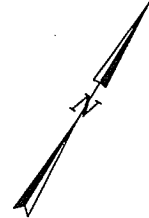
DATE:

02\23\11

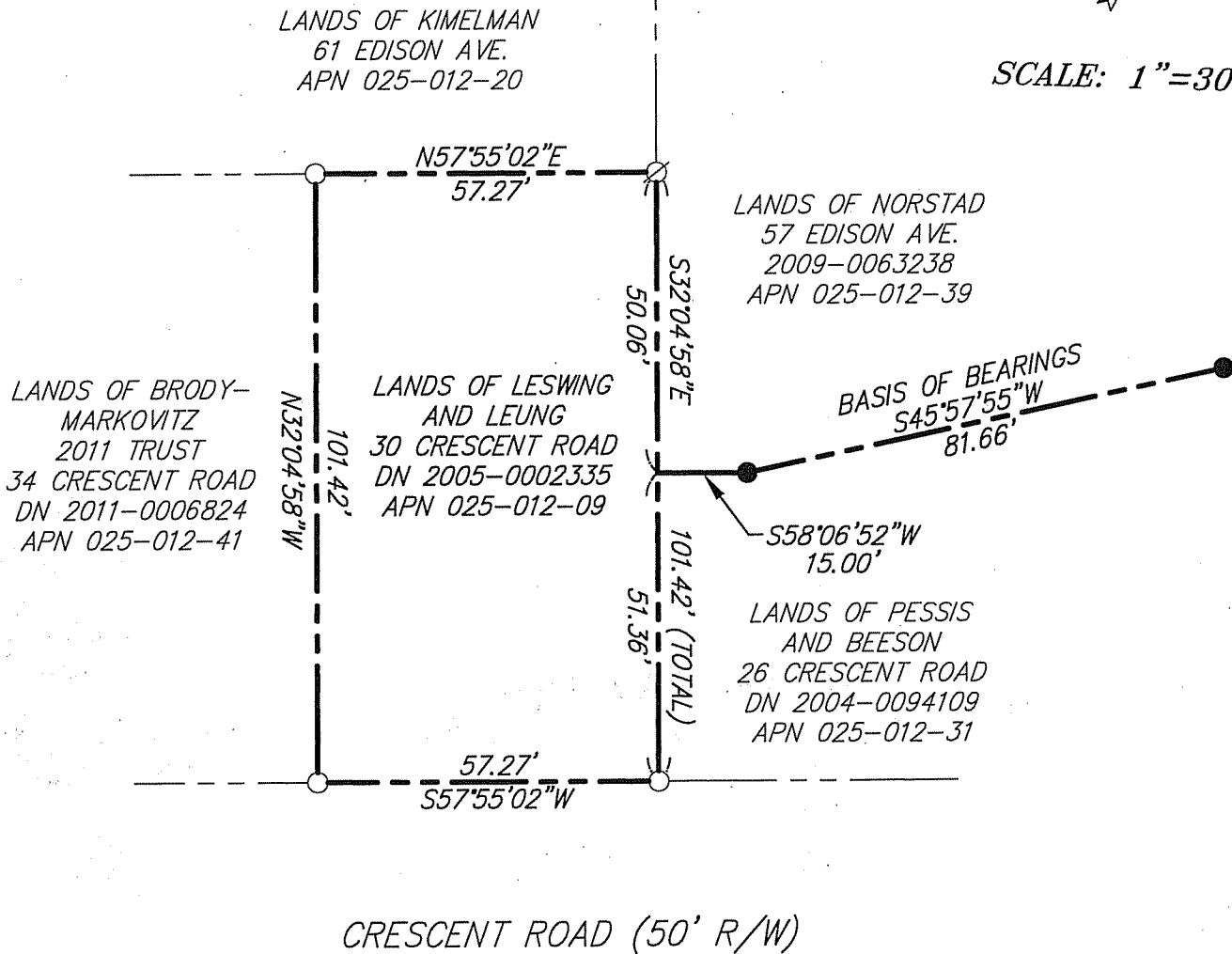
SHEET NO.

2 OF 2

## EXHIBIT A



SCALE: 1"=30'



**LEGEND**

- SET 3/4" IRON PIPE & YELLOW CAP, "R.C.E. 18221"
- ⊗ SET NAIL AND TAG IN CONCRETE AT FENCE POST, "R.C.E. 18221"
- FOUND 5/8" REBAR WITH 1-1/2" ALUMINUM CAP, PER 2001 OS 212

**NOTE:**

ALL DIMENSIONS AND BEARINGS SHOWN HEREON ARE PER 2001 OS 212.

APN 025-012-09