

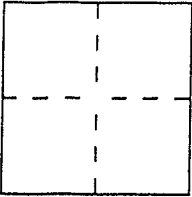
CORNER RECORD

Document Number 024-192-38

City of Corte Madera

County of Marin, California

Brief Legal Description Lot 23 of 9 Rm 35



CORNER TYPE

Government Corner Control
Meander Property
Rancho Other
Date of Survey _____

COORDINATES
(Optional)

N. _____
E. _____
Zone _____ Datum _____
Elev. _____

Corner — Left as found Found and tagged Established Reestablished Rebuilt

Identification and type of corner found: Evidence used to identify or procedure used to establish or reestablish the corner:
Found Std. Street Monuments For 9 Rm 35 (see Sketch Map)

A description of the physical condition of the monument as found and as set or reset:
Set 5/8" Bar & Cap LS 5290

SURVEYOR'S STATEMENT

This Corner Record was prepared by me or under my direction in conformance with the Land Surveyors' Act on May 9th 2005
Signed David Harp L.S. or R.C.E. Number LS 5290



COUNTY SURVEYOR'S STATEMENT

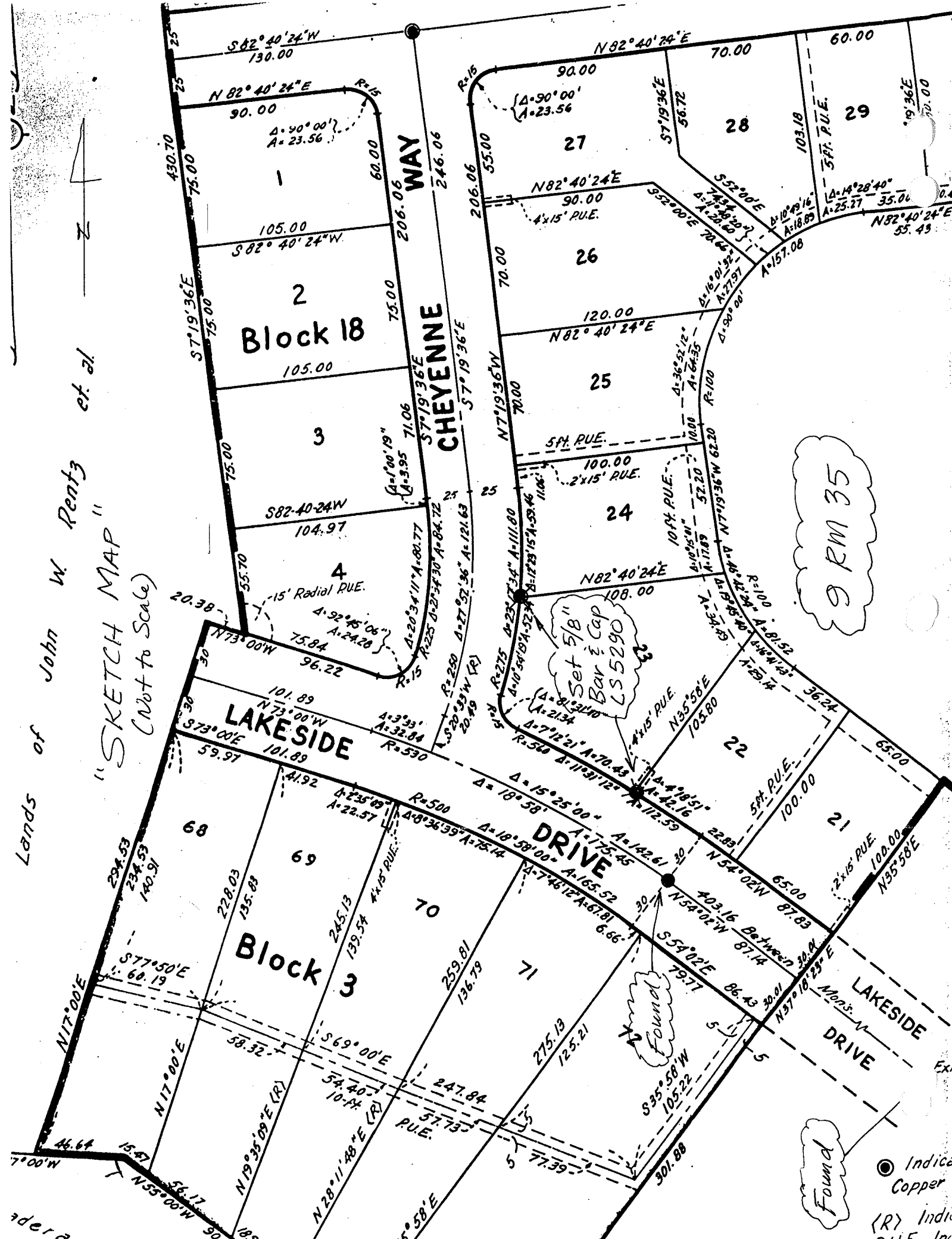
This Corner Record was received MAY 11, 2005 and examined and filed JUNE 29, 2005
Signed _____ Title COUNTY SURV.



County Surveyor's Comment _____

Lands of John W. Rentz et al

"SKETCH MAP" (Not to Scale)



Block 18

Block 3

Block 3

CHEYENNE WAY

DRIVE

LAKESIDE DRIVE

9 RM 35

Found

● Indica Copper

(R) Indica

Set 5/8" Bar & Cap
LS 5290

Found

ader a