

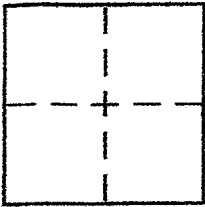
CORNER RECORD

Document Number APN. 024-191-26

City of CORTE MADERA

County of MARIN, California

Brief Legal Description LOT 27, "MAP OF SUB. NO. 9, MADERA GARDENS - 9 RM 35"



CORNER TYPE

Government Corner Control
Meander Property
Rancho Other
Date of Survey 1/18/05

COORDINATES (Optional)

N. _____
E. _____
Zone _____ NAD27 NAD83
NAD83 Epoch _____
Elev. _____
Vert. Datum: NGVD29 NAVD88
Meas. Units: Metric Imperial

Corner - Left as found Found and tagged Established Reestablished Rebuilt

Identification and type of corner found: Evidence used to identify or procedure used to establish or reestablish the corner:
FOUND EXISTING STD. STREET MONUMENT PER 9 RM 35 IN RECORD
POSITION BASED ON FIELD SURVEY. SET PROPERTY CORNERS AND
PROPERTY LINE OFFSETS BASED ON RECORD INFORMATION AS SHOWN
HEREON.

A description of the physical condition of the monument as found and as set or reset:
MONUMENTS FOUND UNDISTURBED. SET 1/2" RE-BAR PINS WITH
CAPS "PLS 6234".

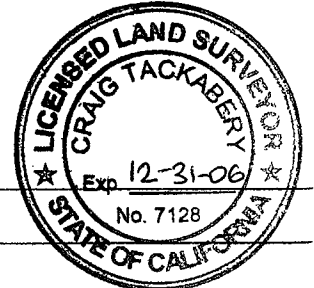
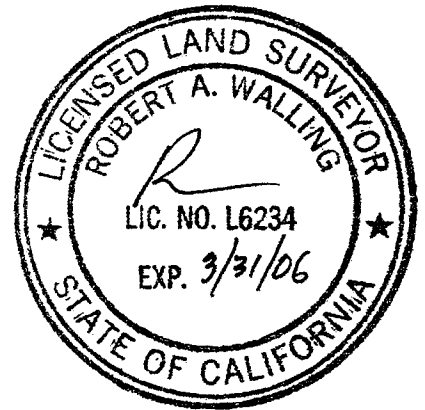
SURVEYOR'S STATEMENT

This Corner Record was prepared by me or under my direction in conformance with
the Land Surveyor's Act on JANUARY 18 2005
Signed [Signature] P.L.S. or R.C.E. No. 6234

COUNTY SURVEYOR'S STATEMENT

This Corner Record was received JANUARY 27, 2005
and examined and filed MARCH 3, 2005
Signed [Signature] P.L.S. or R.C.E. No. 7128
Title COUNTY SURVEYOR

County Surveyor's Comment _____

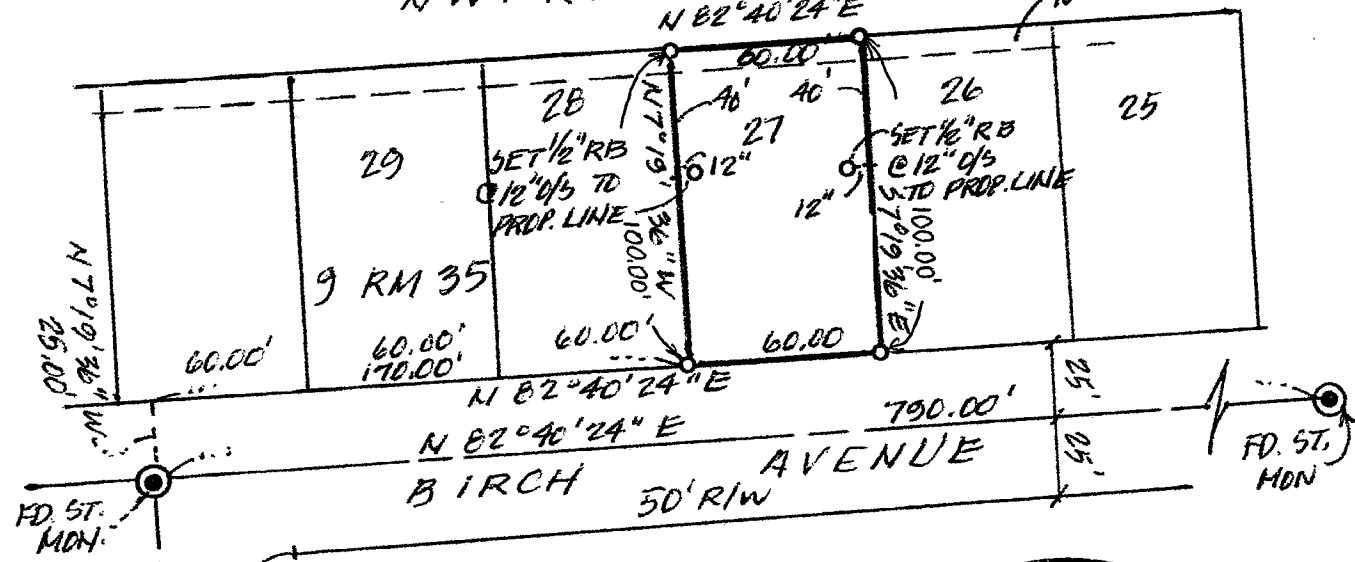




SCALE 1"=60'

NW PRR R/W (FORMERLY)
N 82°40'24"E

10' R.U.E.



LEGEND
○ SET 1/2" PIN WITH
CAP "PLS 6234"



SURVEY PLAT
LOT 27, 9 RM 35
133 BIRCH AVE, CORTE MADERA
MARIN COUNTY, CALIFORNIA
APN. 024-191-26



BOB WALLING TECHNICAL SERVICES
P.O. Box 1346 • Glen Ellen, CA 95442
(707) 938-1593 (415) 382-1593

JM.105-02

1/27/05