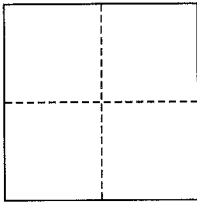


CORNER RECORD

City of Corte Madera

Document Number AP# 024-191-18
County of Marin, California

Brief Legal Description Lot 19, Block 16, 9 RM 35



CORNER TYPE

Government Corner Control
Meander Property
Rancho Other
Date of Survey January 4, 2013

COORDINATES (Optional)

N. _____
E. _____
Zone _____ NAD27 NAD83
NAD83 Epoch _____
Elev. _____
Vert. Datum: NGVD29 NAVD88
Meas. Units: Metric Imperial

Corner- Left as found Found and tagged Established Reestablished Rebuilt

Identification and type of corner found: Evidence used to identify or procedure used to establish or reestablish the corner:
Found original Standard Street Mons, per 9 RM 35.

A description of the physical condition of the monument as found and as set or reset: All Property Corners and Property Line points were set as shown hereon, per 9 RM 35; P/L setback control points for fencing were placed as shown hereon.

SURVEYOR'S STATEMENT

This corner Record was prepared by me or under my direction in conformance with the Land Surveyor's Act on March 8, 2013

Signed [Signature] P.L.S. or R.C.E. No. 30465

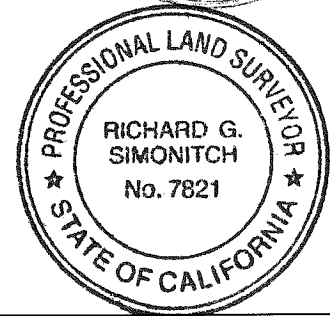


COUNTY SURVEYOR'S STATEMENT

This Corner Record was received JAN. 10, 2014
and examined and filed MARCH 6, 2014

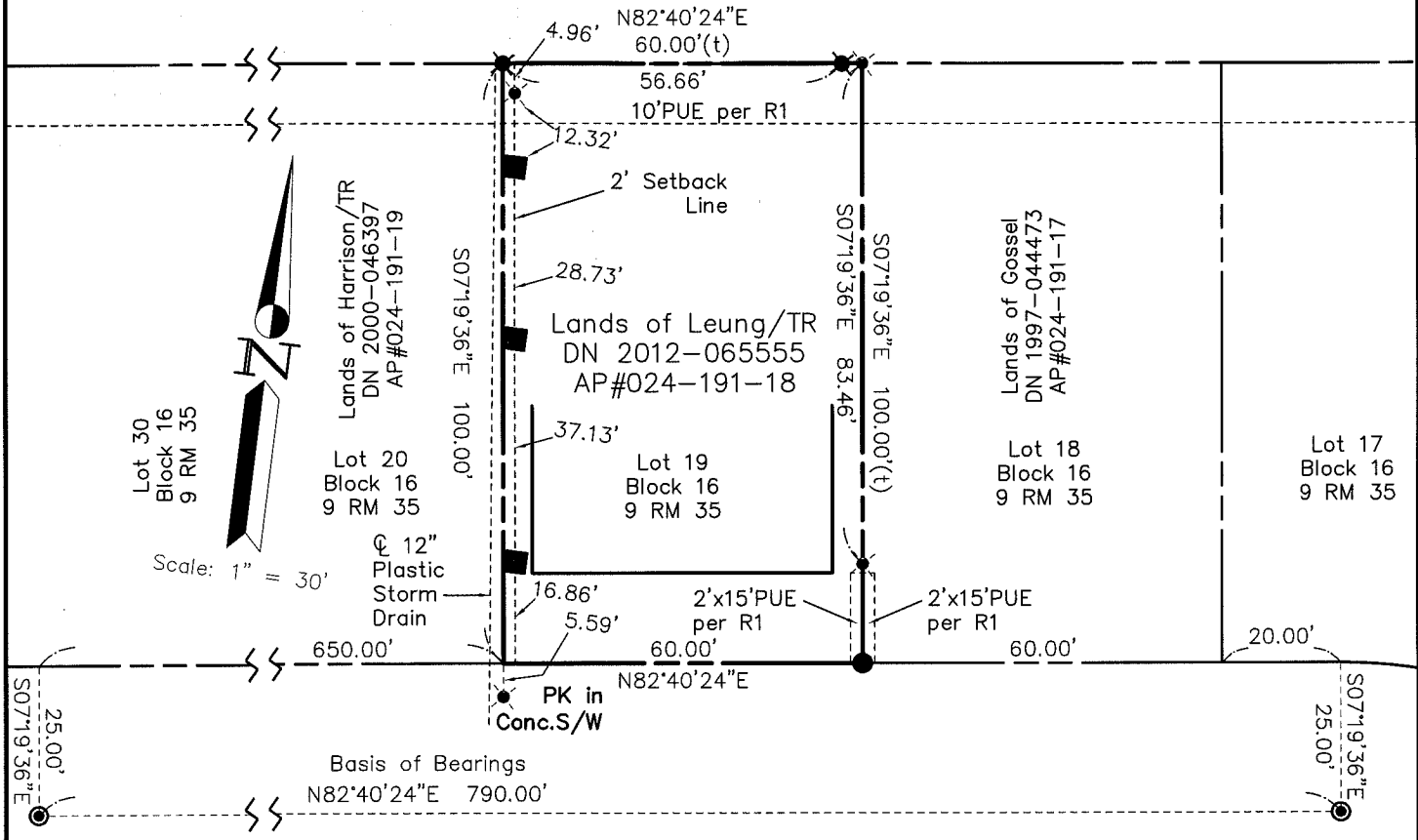
Signed [Signature] P.L.S. or R.C.E. No. 7821

Title DEPUTY



County Surveyor's Comment _____

Lands of City
of Corte Madera
DN 1994-055607
AP#024-031-31



BIRCH AVE. (50'R/W)

CHEYENNE WAY
(50'R/W)

LEGEND

- FOUND STRT MONUMENT, PER 9 RM 35
- SET IP & PLUG, RCE 30465
- ⊗ SET REBAR & CAP, RCE 30465
- ⊗ SET NAIL & FLAGGING IN FENCE
- SET 2x2 HUB & TACK
- (t) TOTAL
- R1 9 RM 35

Note: All distances are in feet and decimals thereof.

SHEET	1	OF	1
SCALE:	1" = 30'	DESIGN:	PR
DATE:	Jan 2013	DRAWN:	PR
FILE:	2012-117	CHECKED:	J.L.H

J.L. ENGINEERING
CIVIL ENGINEERS-LAND SURVEYORS
1539 4th ST., SAN RAFAEL, CA. 94901 (415) 457-6647

Corner Record

Lands of Leung - 101 Birch Ave.
APN 024-191-18, Corte Madera, Marin County, CA