

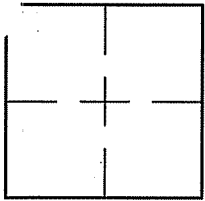
CORNER RECORD

Document Number A.P.# 024-184-07

City of CORTE MADERA

County of MARIN, California

Brief Legal Description LOT 58 / 9 R.M. 36



CORNER TYPE

COORDINATES (Optional)

Government Corner Control
 Meander Property
 Rancho Other
 Date of Survey 5/25/06

N. _____
 E. _____
 Zone _____ NAD27 NAD83
 NAD83 Epoch _____
 Elev. _____
 Vert. Datum: NGVD29 NAVD88
 Meas. Units: Metric Imperial

Corner- Left as found Found and tagged Established Reestablished Rebuilt

Identification and type of corner found: Evidence used to identify or procedure used to establish or reestablish the corner:
ESTABLISHED LOT 58 BY USING THE 3/4" PIPE AND TAGS ON APACHE ROAD AS SHOWN ON 9 R.M. 36.
SEE SHEET 2.

A description of the physical condition of the monument as found and as set or reset: SEE SHEET 2.

SURVEYOR'S STATEMENT

This Corner Record was prepared by me or under my direction in conformance with

the Land Surveyor's Act on MAY 25 2006

Signed Lawrence P Doyle P.L.S. or R.C.E. No. P.L.S. 4694



COUNTY SURVEYOR'S STATEMENT

This Corner Record was received JUNE 5, 2006

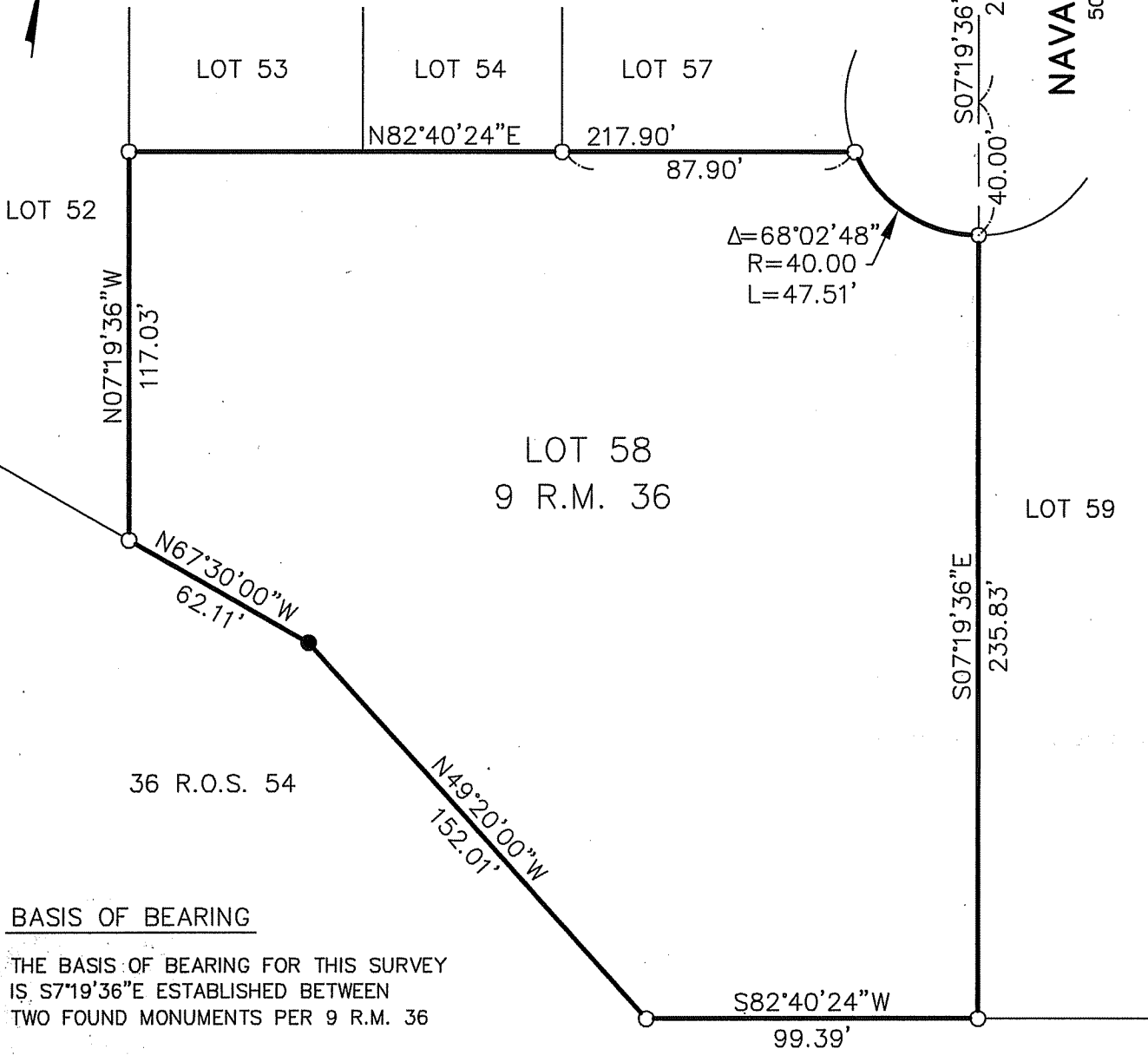
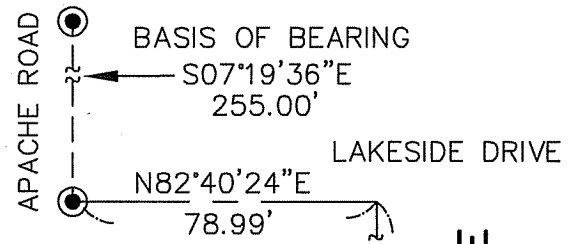
and examined and filed AUGUST 7, 2006

Signed [Signature] P.L.S. or R.C.E. No. 7128

Title COUNTY SURVEYOR

County Surveyor's Comment _____





BASIS OF BEARING

THE BASIS OF BEARING FOR THIS SURVEY IS S7°19'36\"/>

LEGEND

- FOUND 3/4" PIPE/TAGS PER 9 R.M. 36
- SET 3/4" PIPE/PLUG L.S. 4694
- FOUND REBAR/CAP L.S. 5290 PER 36 R.O.S. 54



CORNER RECORD		
LOT 58 / 9 R.M. 36		
CORTE MADERA MARIN COUNTY CALIFORNIA		
SCALE: 1" = 50'	LAWRENCE P. DOYLE	DRAWN BY:
DATE: 2/27/06		SHEET 2 OF 2
LAND SURVEYOR/CIVIL ENGINEER		
P.O. BOX 1609 MILL VALLEY CA 94942 (415-388-9585)		
		DRAWING NO.
		1485-06