

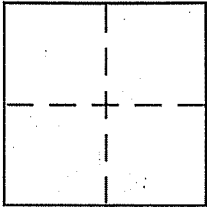
**CORNER RECORD**

Document Number 024-181-03

City of Corte Madera

County of Corte Marin, California

Brief Legal Description Lot 39, Block 16, 9 Maps 36



**CORNER TYPE**

Government Corner  Control   
Meander  Property   
Rancho  Other   
Date of Survey 04-10-07

**COORDINATES (Optional)**

N. \_\_\_\_\_  
E. \_\_\_\_\_  
Zone \_\_\_\_\_ NAD27  NAD83   
NAD83 Epoch \_\_\_\_\_  
Elev. \_\_\_\_\_  
Vert. Datum: NGVD29  NAVD88   
Meas. Units: Metric  Imperial

Corner - Left as found  Found and tagged  Established  Reestablished  Rebuilt

Identification and type of corner found: Evidence used to identify or procedure used to establish or reestablish the corner:

See page 2 of 2

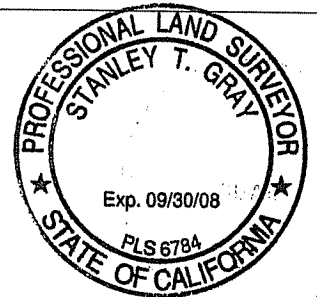
A description of the physical condition of the monument as found and as set or reset:

See page 2 of 2

**SURVEYOR'S STATEMENT**

This Corner Record was prepared by me or under my direction in conformance with the Land Surveyor's Act on 5/7/07

Signed [Signature] P.L.S or R.C.E. No. 6784



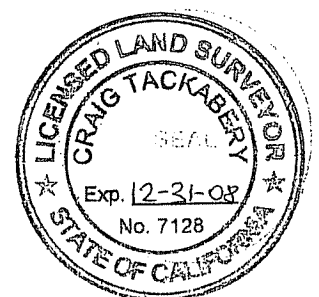
**COUNTY SURVEYOR'S STATEMENT**

This Corner Record was received JUNE 22, 2007

and examined and filed JULY 25, 2007

Signed [Signature] P.L.S or R.C.E. No. 7128

Title COUNTY SURVEYOR



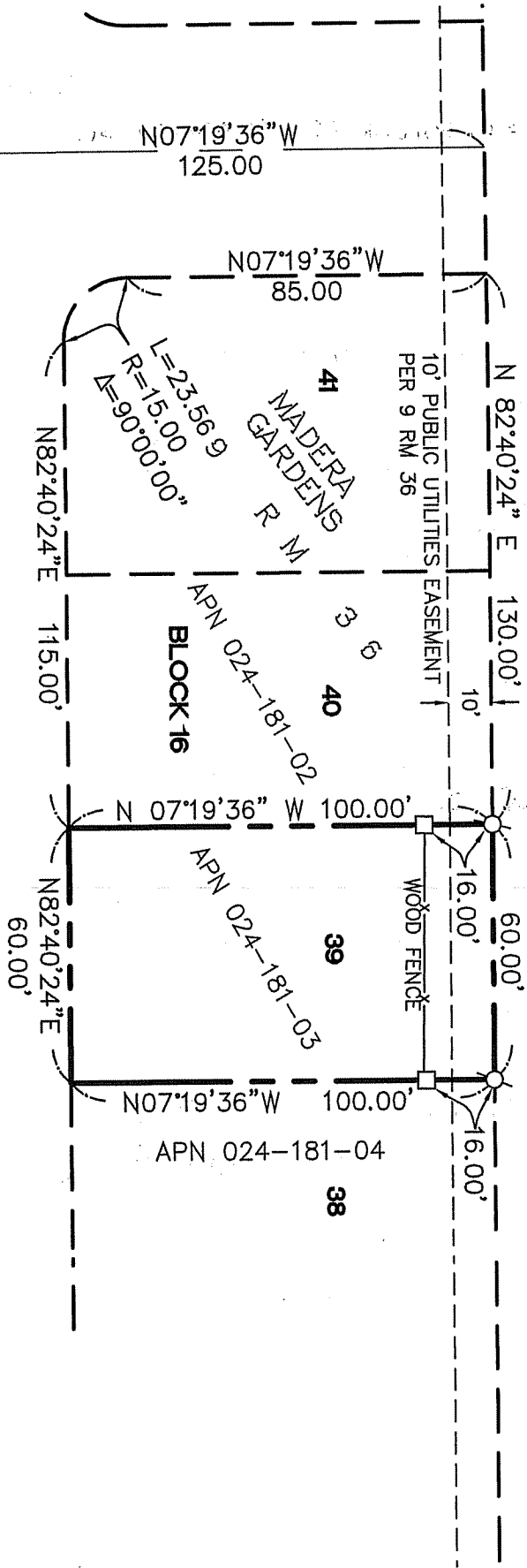
County Surveyor's Comment \_\_\_\_\_

**REFERENCE**

MAP OF SUBDIVISION NO. 10,  
 MADERA GARDENS, TOWN OF CORTE  
 MADERA, FILED FOR RECORD 29 MAY  
 1956, IN VOLUME 9, PAGE 36,  
 OFFICIAL RECORD OF MARIN COUNTY.

**Meridian Surveying**  
 CORNER RECORD  
 1812 UNION STREET  
 SAN FRANCISCO, CA 94133  
 (415) 440-4131  
 info@meridiansurvey.com  
 07034  
 777 GRAHAM AVE, #202  
 SAN RAFAEL, CA 94901  
 (415) 460-0800

**Northwestern Pacific Railway Right of Way  
 (BIKE/PEDESTRIAN PATH)**



APACHE ROAD  
 (60' WIDE)

BIRCH AVENUE  
 (50' WIDE)

N82°40'24"E  
 710.00'

CHEYENNE WAY  
 (60' WIDE)

**LEGEND**

- SET REBAR & CAP, PLS 6784
- SET HUB, BRASS TACK AND TAG, PLS 6784
- FOUND IP, TACK AND TAG, RE 2488, PER 9 RM 36

