

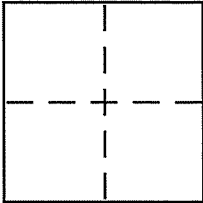
CORNER RECORD

Document Number APN 025-164-03

City of CORTE MADERA

County of MARIN, California

Brief Legal Description LOT 45C E R.M. 73



CORNER TYPE

Government Corner Control
Meander Property
Rancho Other
Date of Survey _____

COORDINATES (Optional)

N. _____
E. _____
Zone _____ NAD27 NAD83
NAD83 Epoch _____
Elev. _____
Vert. Datum: NGVD29 NAVD88
Meas. Units: Metric Imperial

Corner -- Left as found Found and tagged Established Reestablished Rebuilt

Identification and type of corner found: Evidence used to identify or procedure used to establish or reestablish the corner:

RE-ESTABLISHED N/W CORNER PER 2004 MAPS 244. FOUND REBARS & CAPS LS 7053 HELD FOR BASIS OF BEARINGS AND LOT CORNER LOCATION (SEE REVERSE)

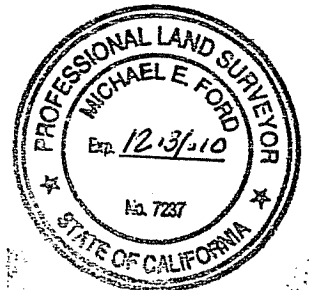
A description of the physical condition of the monument as found and as set or reset:

SET 3/4" I.P. AT LOCATION OF MISSING HUB & TACK

SURVEYOR'S STATEMENT

This Corner Record was prepared by me or under my direction in conformance with the Land Surveyor's Act on MAY 21, 2010

Signed Michael E. Ford P.L.S. or R.C.E. No. 7237



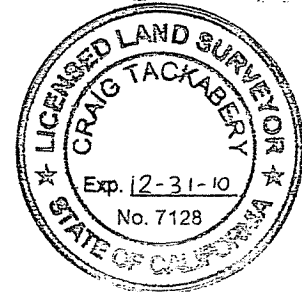
COUNTY SURVEYOR'S STATEMENT

This Corner Record was received MAY 26, 2010

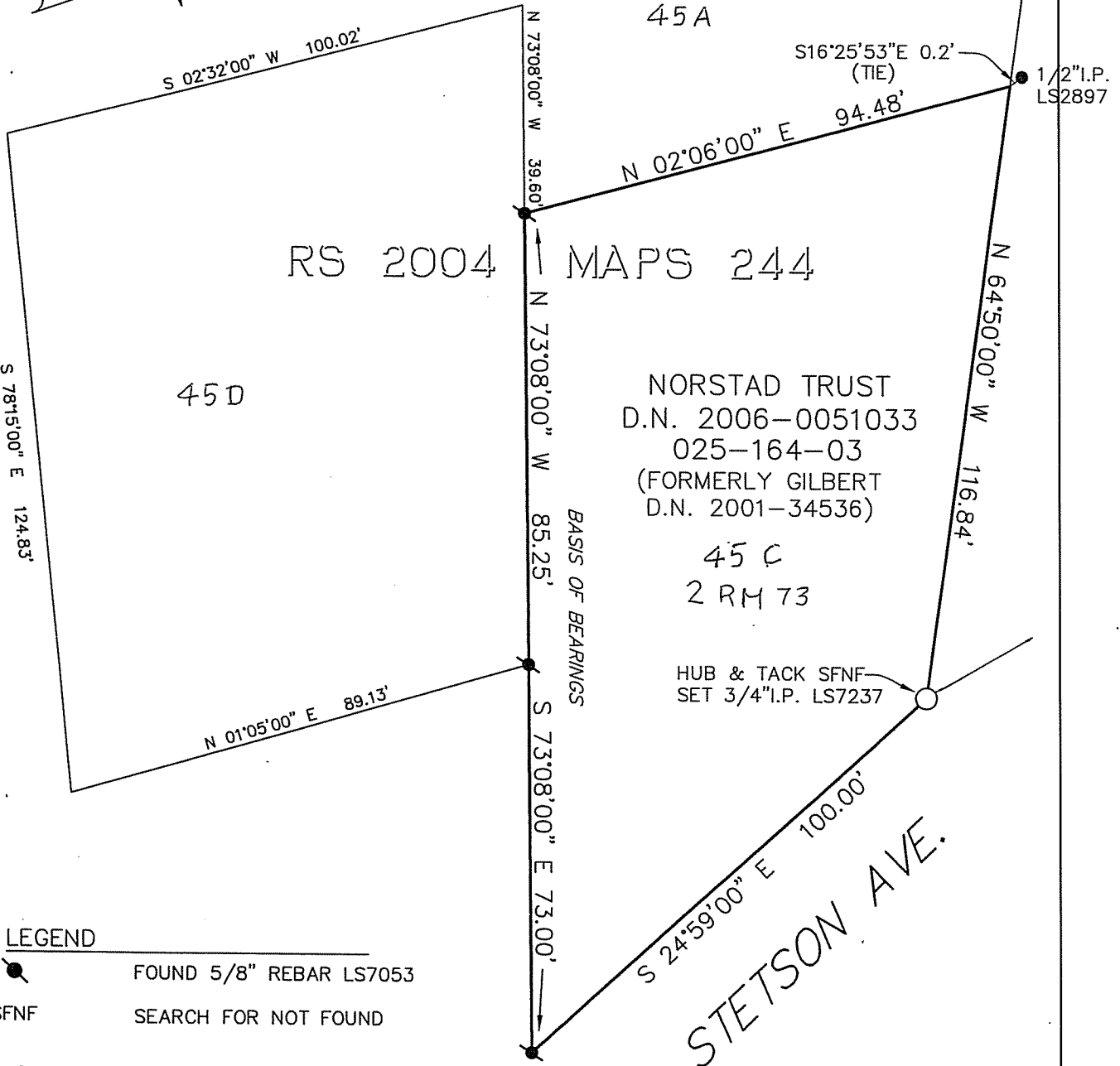
and examined and filed JUNE 21, 2010

Signed _____ P.L.S. or R.C.E. No. 7128


Title COUNTY SURVEYOR



County Surveyor's Comment _____



LEGEND

-  FOUND 5/8" REBAR LS7053
- SFNF SEARCH FOR NOT FOUND

BASIS OF BEARINGS:

S73°08'00" E BETWEEN FOUND IRON PIPES SHOWN ON RECORD OF SURVEY 2004 MAPS 244, M.C.R.

NOTE:

ALL BEARINGS AND DISTANCES ARE RECORD AND MEASURED PER RECORD OF SURVEY 2004 MAPS 244



8910 sonoma hwy suite 12b
 po box 1243, kenwood, ca 95452
 p 707.833.6468 - f 707.833.5744
 www.michaelfordinc.com

NORSTAD BOUNDARY RETRACEMENT SURVEY
 164 STETSON AVE., CORTE MADERA
 APN 025-164-03 - R.O.S. 2004 MAPS 244

SCALE 1" 30' DTAE: 5/21/2010 JOB 101939