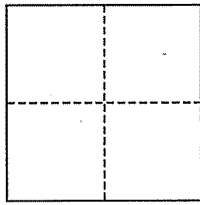


CORNER RECORD

City of Corte Madera

Document Number 024-125-14
County of Marin, California

Brief Legal Description Lot 68, Block 13, 7 RM 70



CORNER TYPE

Government Corner Control
Meander Property
Rancho Other
Date of Survey May 16, 2011

COORDINATES (Optional)

N. _____
E. _____
Zone _____ NAD27 NAD83
NAD83 Epoch _____
Elev. _____
Vert. Datum: NGVD29 NAVD88
Meas. Units: Metric Imperial

Corner- Left as found Found and tagged Established Reestablished Rebuilt

Identification and type of corner found: Evidence used to identify or procedure used to establish or reestablish the corner:
Found Standard Street Monuments per 7 RM 32.

A description of the physical condition of the monument as found and as set or reset: Set Iron Pipe & Plug, #4 Rebar & Cap, and a 2"x2" Hub & Tack as shown and noted hereon.

SURVEYOR'S STATEMENT

This corner Record was prepared by me or under my direction in conformance with the Land Surveyor's Act on June 14, 2011

Signed [Signature] P.L.S. or R.C.E. No. 30465



COUNTY SURVEYOR'S STATEMENT

This Corner Record was received JUNE 16, 2011

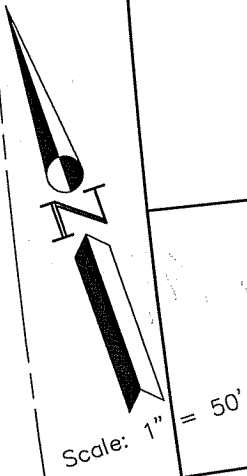
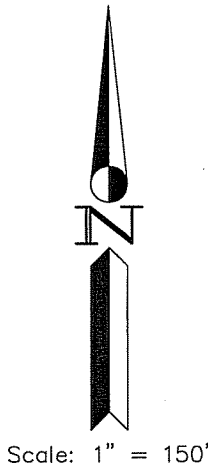
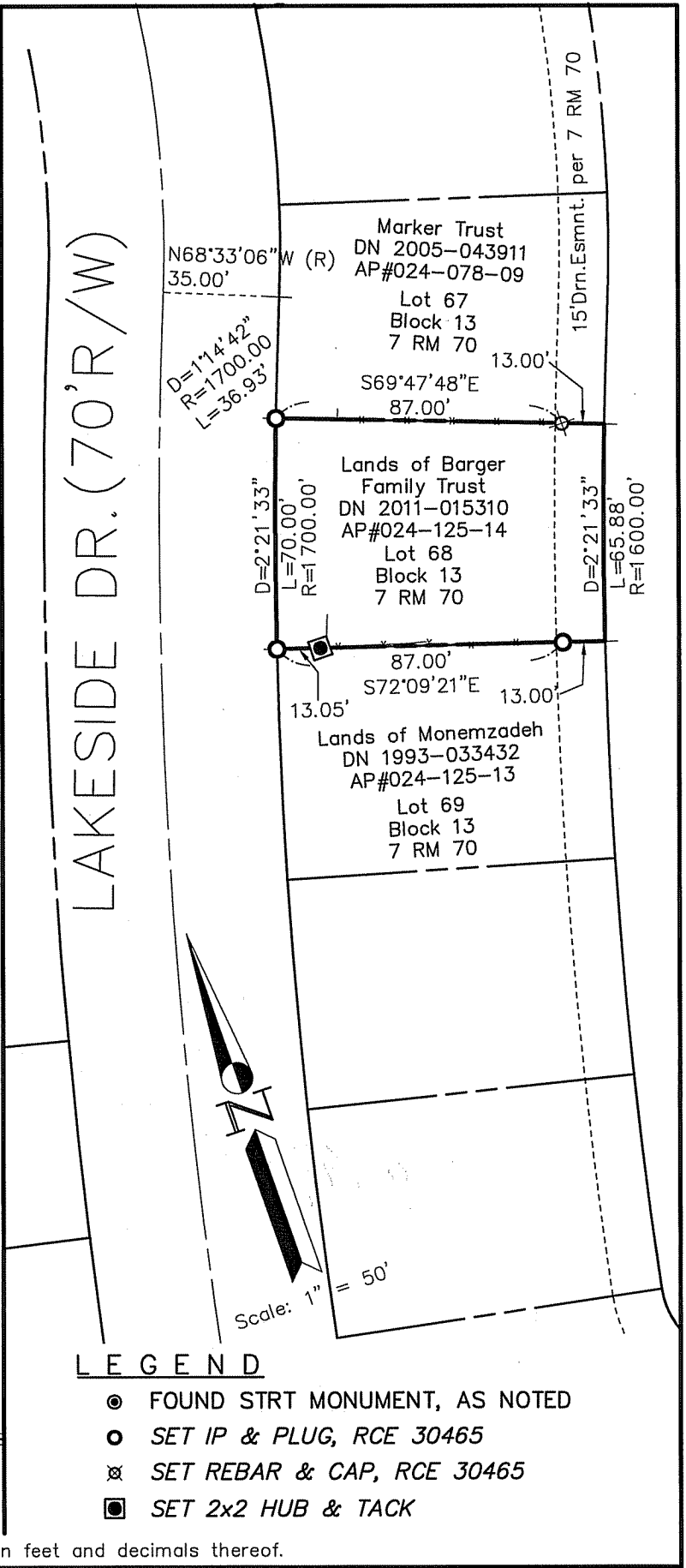
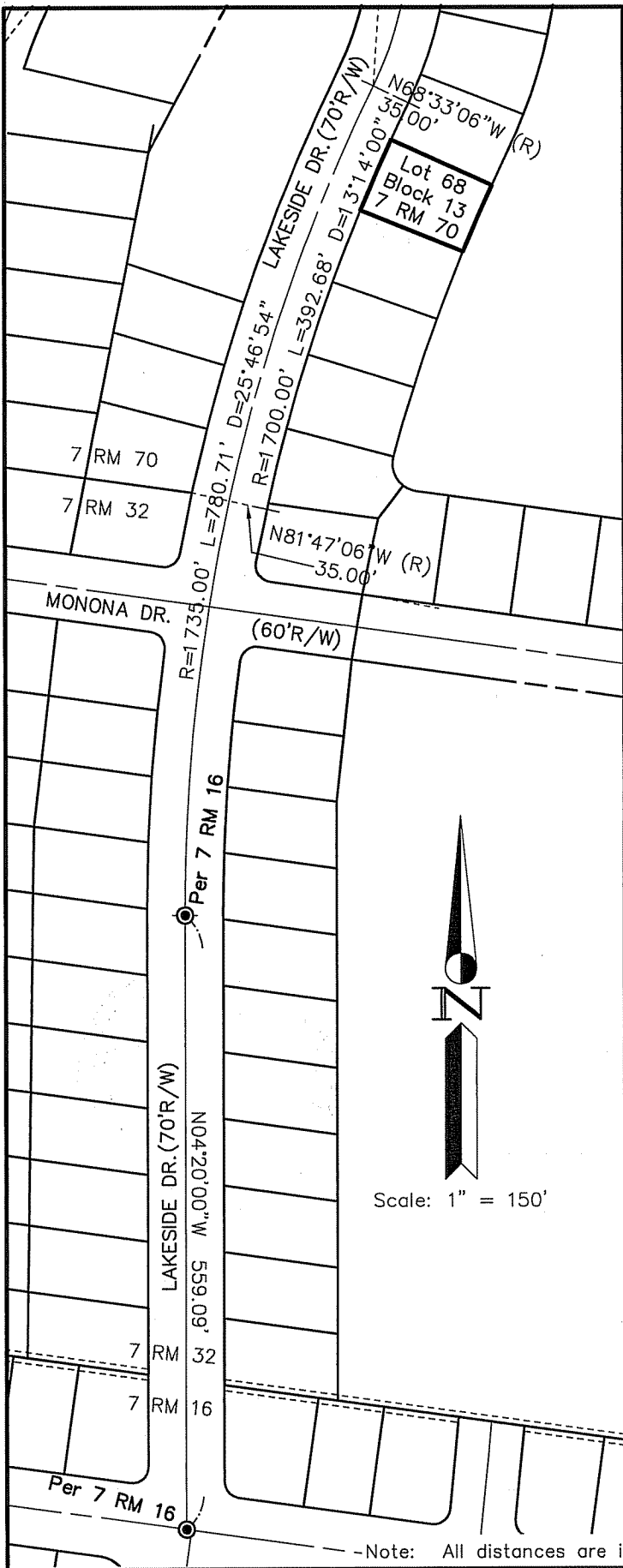
and examined and filed JUNE 22, 2011

Signed [Signature] P.L.S. or R.C.E. No. 7128

Title COUNTY SURVEYOR



County Surveyor's Comment _____



LEGEND

- FOUND STRT MONUMENT, AS NOTED
- SET IP & PLUG, RCE 30465
- ⊗ SET REBAR & CAP, RCE 30465
- SET 2x2 HUB & TACK

--Note: All distances are in feet and decimals thereof.

SHEET	1	OF	1
SCALE:	As Noted	DESIGN:	PR
DATE:	Jun 2011	DRAWN:	PR
FILE:	2011-052	CHECKED:	J.L.H
2011-052\DWG\11-052-BASE,COR-REC			

J.L. ENGINEERING
 CIVIL ENGINEERS—LAND SURVEYORS
 1539 4th ST., SAN RAFAEL, CA. 94901 (415) 457-6647

Corner Record
 Lands of Barger Family Trust — 39 Lakeside Dr.
 APN 024-125-14, Corte Madera, Marin County, CA