

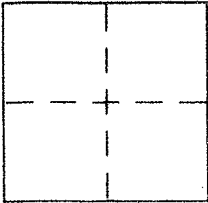
CORNER RECORD

Document Number: APN 24-124-10

City of Corte Madera

County of MARIN, California

Brief Legal Description lot 16, T.R.M. 32 // APN 24-124-10 // #25 Lakeside Drive



CORNER TYPE

Government Corner Control
Meander Property
Rancho Other
Date of Survey _____

COORDINATES (Optional)

N. _____
E. _____
Zone _____ NAD27 NAD83
NAD83 Epoch _____
Elev. _____
Vert. Datum: NGVD29 NAVD88
Meas. Units: Metric Imperial

Corner - Left as found Found and tagged Established Reestablished Rebuilt

Identification and type of corner found: Evidence used to identify or procedure used to establish or reestablish the corner:

See Back

A description of the physical condition of the monument as found and as set or reset:

See Back

SURVEYOR'S STATEMENT

This Corner Record was prepared by me or under my direction in conformance with the Land Surveyor's Act on April 7, 2005

Signed Michael A. Brogan P.L.S or R.C.E. No. LS 5767



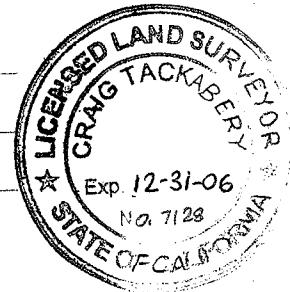
COUNTY SURVEYOR'S STATEMENT

This Corner Record was received APRIL 11, 2005

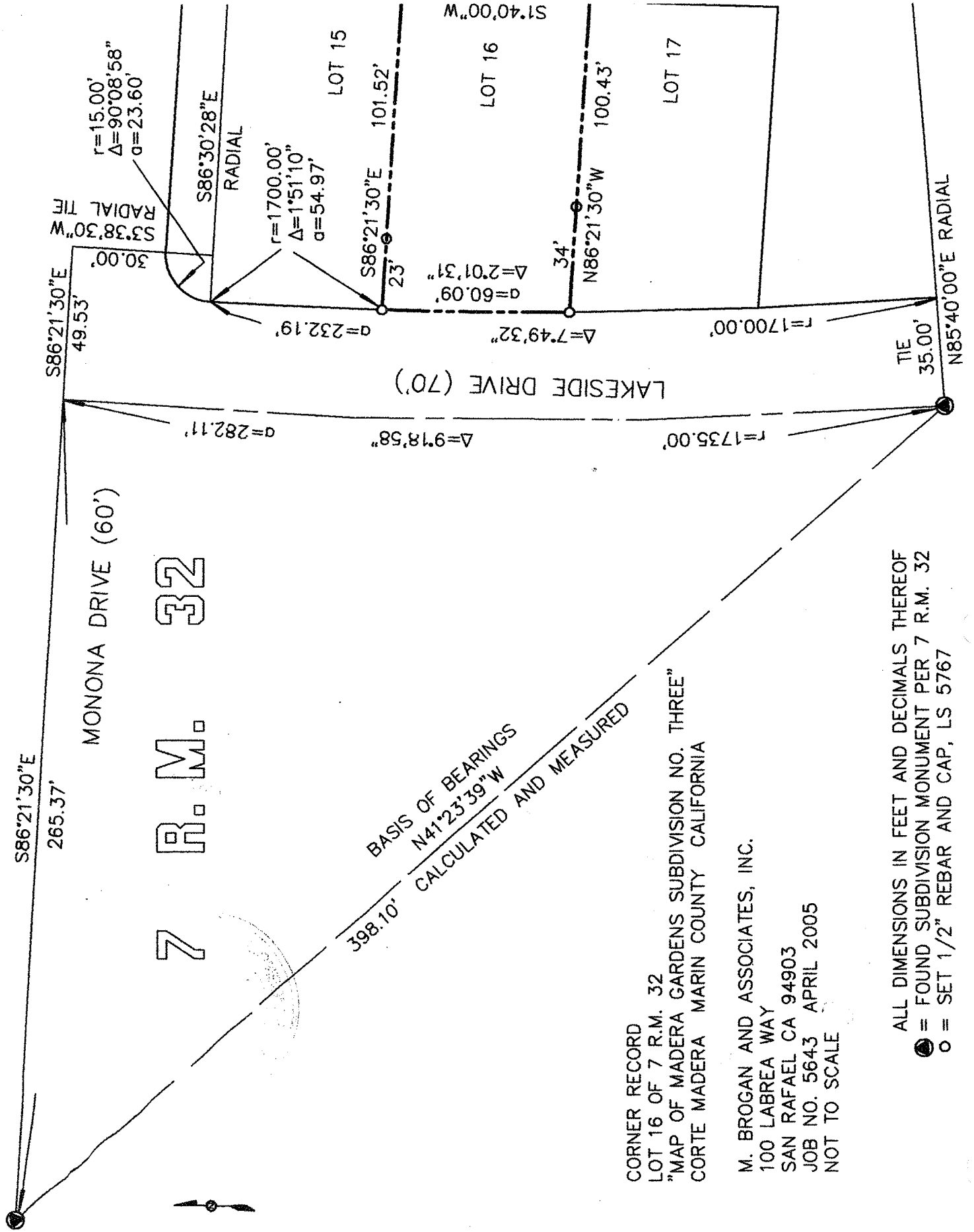
and examined and filed MAY 9, 2005

Signed [Signature] P.L.S or R.C.E. No. 7128

Title COUNTY SURVEYOR



County Surveyor's Comment _____



7 R.M. 32

BASIS OF BEARINGS
 $N41^{\circ}23'39''W$
 CALCULATED AND MEASURED

CORNER RECORD
 LOT 16 OF 7 R.M. 32
 "MAP OF MADERA GARDENS SUBDIVISION NO. THREE"
 CORTE MADERA MARIN COUNTY CALIFORNIA

M. BROGAN AND ASSOCIATES, INC.
 100 LABREA WAY
 SAN RAFAEL CA 94903
 JOB NO. 5643 APRIL 2005
 NOT TO SCALE

ALL DIMENSIONS IN FEET AND DECIMALS THEREOF
 ● = FOUND SUBDIVISION MONUMENT PER 7 R.M. 32
 ○ = SET 1/2" REBAR AND CAP, LS 5767