

CORNER RECORD

APN 24-111-04

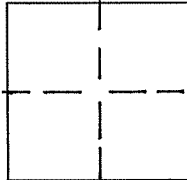
Document No. 2-OS-172

City of Corte Madera County of Marin, California

Brief Legal Description Lands of Larkspur School District, 2 OS 172

CORNER TYPE

COORDINATES (Optional)



Government Corner Control
 Meander Property
 Rancho Other
 Date of Survey October 23, 2001

N. _____
 E. _____
 Zone _____ Datum _____
 Elev. _____

Corner- Left as found Found and tagged Established Reestablished Rebuilt

Identification and type of corner found: Evidence used to identify or procedure to establish or reestablish the corner:

Established property corner per found std. street monuments on Mohawk Ave. as shown on herein sht. 2 and per "Map of Madera Gardens Subdivision No. Three", recorded in Book 7 of Maps Page 32, County of Marin.

A description of the physical condition of the monument as found and as set or reset:

Set 3/4" iron pipe w/ plastic cap, LS 5461 at northwest corner, set 3/4" iron pipe w/ plastic cap, LS 5461 line stakes on the westerly and southerly property lines, as shown on herein sheet 2.

SURVEYOR'S STATEMENT

This Corner Record was prepared by me or under my direction in conformance with the Land Surveyors Act on December 28, 2001.

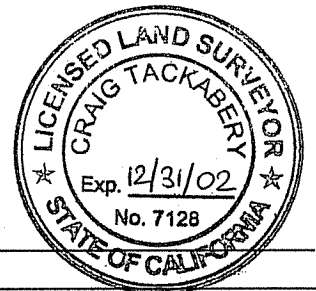
Signed David Keane PLS Number 5461



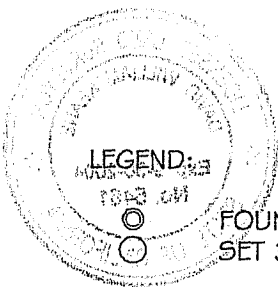
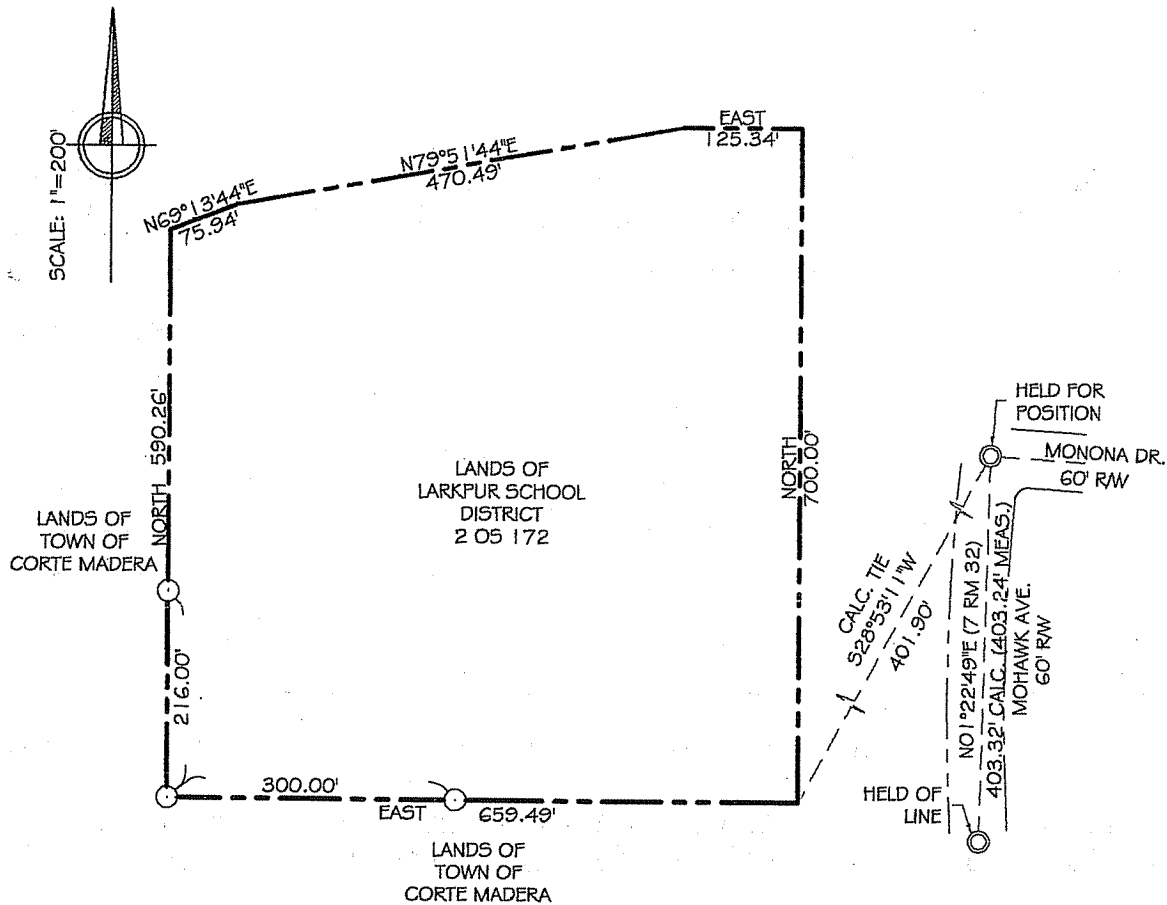
COUNTY SURVEYOR'S STATEMENT

This Corner Record was received January 15, 2002 and examined and filed JANUARY 16, 2002.

Signed _____ Title DEPUTY



County Surveyor's Comments _____



LEGEND:

FOUND STD. STREET MONUMENT PER 7 RM 32
SET 3/4" IRON PIPE W/ PL. CAP LS 5461

NOTE:

1. ALL DIMENSIONS SHOWN HEREIN ARE PER 2 05 172 AND 7 RM 32, UNLESS OTHERWISE NOTED.
2. ALL DISTANCES AND DIMENSIONS ARE IN FEET AND DECIMALS THEREOF.
3. EASEMENTS IF ANY ARE NOT SHOWN.
4. APN. 24-1111-04.

NEIL_CUM DATE: 12/28/01

SHEET 2 OF 2

EXHIBIT "A"

BRACKEN & KEANE

Civil Engineers & Land Surveyors

5710 Paradise Drive, Ste. 8

Corte Madera, CA 94925

tel: (415) 927-8801 fax: (415) 927-8803