

# CORNER RECORD

Agency Index

CR 22-027

Document Number

024-097-26

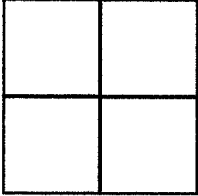
County of

MARIN, California

Town of Corte Madera

Brief Legal Description I.N. 2021-038645

### CORNER TYPE



Government Corner  Control   
 Meander  Property   
 Rancho  Other

Date of Survey December 14, 2021

### COORDINATES (Optional)

N. \_\_\_\_\_ E. \_\_\_\_\_  
 Elevation \_\_\_\_\_  
 Units Metric  U.S. Survey Foot   
 Horizontal Datum \_\_\_\_\_  
 Zone \_\_\_\_\_ Epoch Date \_\_\_\_\_  
 Vertical Datum \_\_\_\_\_

Complies with Public Resources Code §§8801-8819  
 Complies with Public Resources Code §§8890-8902

PLS Act Ref:  8765(d)  8771  8773  Other:

Corner/Monument:  Left as found  Established  Rebuilt  Pre-Construction  
 Found and tagged  Reestablished  Referenced  Post-Construction

Narrative of corner identified and monument as found, set, reset, replaced, or removed:  
 See sheet #2 for description (s):

### SURVEYOR'S STATEMENT

This Corner Record was prepared by me or under my direction in conformance with  
 the Professional Land Surveyors' Act on January 12, 2022

Signed [Signature] P.L.S. or R.C.E. No. 6649



### COUNTY SURVEYOR'S STATEMENT

This Corner Record was received 03/15/22

and examined and filed 04/06/22

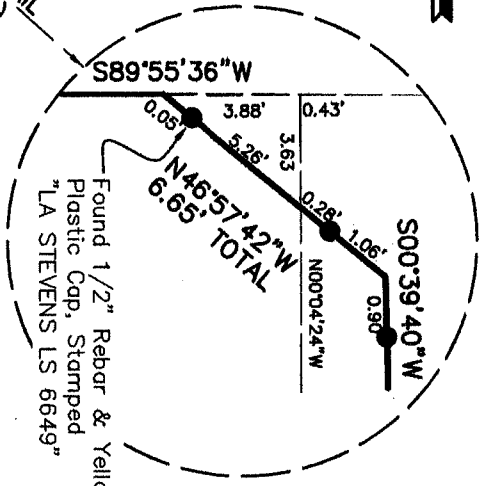
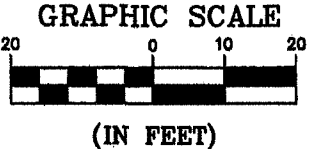
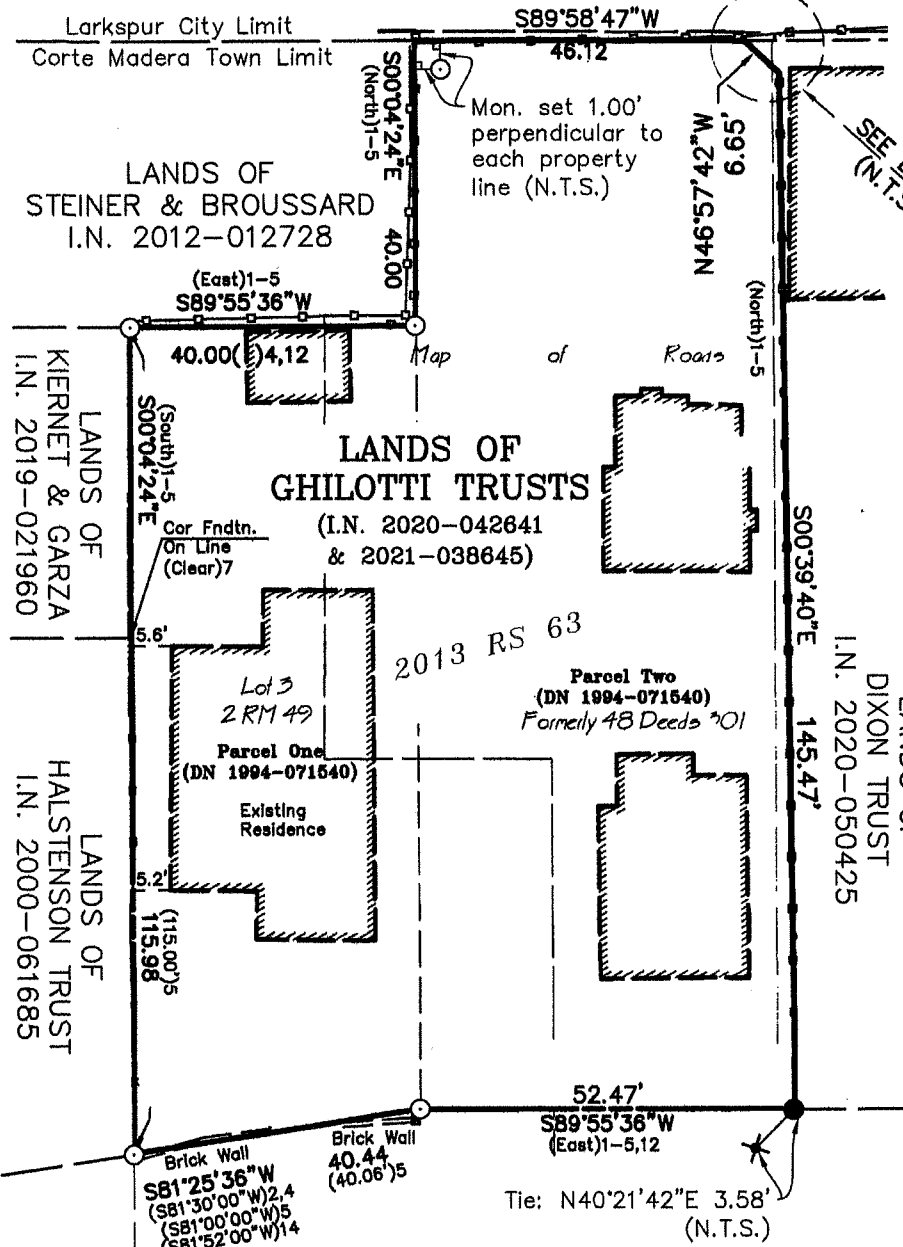
Signed [Signature] P.L.S. or R.C.E. No. 9292

Title DEPUTY



County Surveyor's Comment \_\_\_\_\_

All distances shown are in feet and decimals thereof



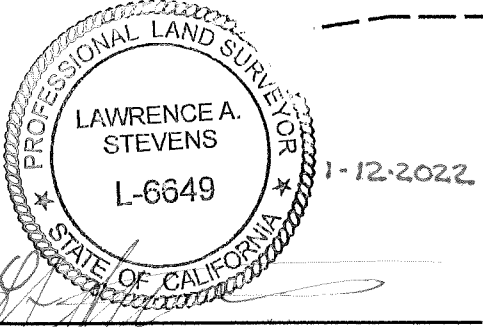
DETAIL

LEGEND

- Found 3/4" Iron Pipe & Yellow Plastic Plug Stamped "LA STEVENS LS 6649", per ( )1, Unless Noted Otherwise
- ✕ Found Lead Plug & Tag, Stamped "LS 6234", per ( )1
- Set 5/8" Rebar & Punched Aluminum Cap, Stamped LA STEVENS PLS 6649"
- Set Mag Nail & Brass Washer, Stamped "LA STEVENS PLS 6649"
- ( )1 2013 RS 63
- N.T.S. Not To Scale
- Wood Fence

BALTIMORE AVE.

Mon. set on curb, on property line extension, (50' R/W) 1, 12.22' from corner (N.T.S.)



**CORNER RECORD**  
**LANDS OF GHILOTTI PERSONAL RESIDENCE TRUSTS III & IV**  
(I.N. 2021-038645 & I.N. 2020-42641)

TOWN OF CORTE MADERA  
MARIN COUNTY CALIFORNIA  
SCALE: 1" = ±27'  
DECEMBER, 2021  
**L.A. Stevens & Associates, Inc.**  
Professional Land Surveyors \* (415) 382-7713  
7 Commercial Blvd., Suite 1 \* Novato, CA 94949

Lawrence A. Stevens, PLS 6649  
Copyright © Lawrence A. Stevens 2022

Job # 212174