

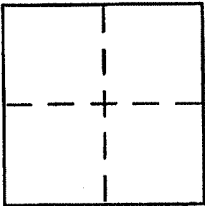
CORNER RECORD

Document Number APN 024-073-03

City of CORTE MADERA

County of MARIN, California

Brief Legal Description LOT 3 OF G/M/35



CORNER TYPE

Government Corner Control
 Meander Property
 Rancho Other
 Date of Survey _____

COORDINATES (Optional)

N. _____
 E. _____
 Zone _____ NAD27 NAD83
 NAD83 Epoch _____
 Elev. _____
 Vert. Datum: NGVD29 NAVD88
 Meas. Units: Metric Imperial

Corner - Left as found Found and tagged Established Reestablished Rebuilt

Identification and type of corner found: Evidence used to identify or procedure used to establish or reestablish the corner:

SEE PAGE 2

A description of the physical condition of the monument as found and as set or reset:

SEE PAGE 2

SURVEYOR'S STATEMENT

This Corner Record was prepared by me or under my direction in conformance with the Land Surveyor's Act on JUNE 15 2001

Signed _____ P.L.S or R.C.E. No. 6784

COUNTY SURVEYOR'S STATEMENT

This Corner Record was received JUNE 19, 2001

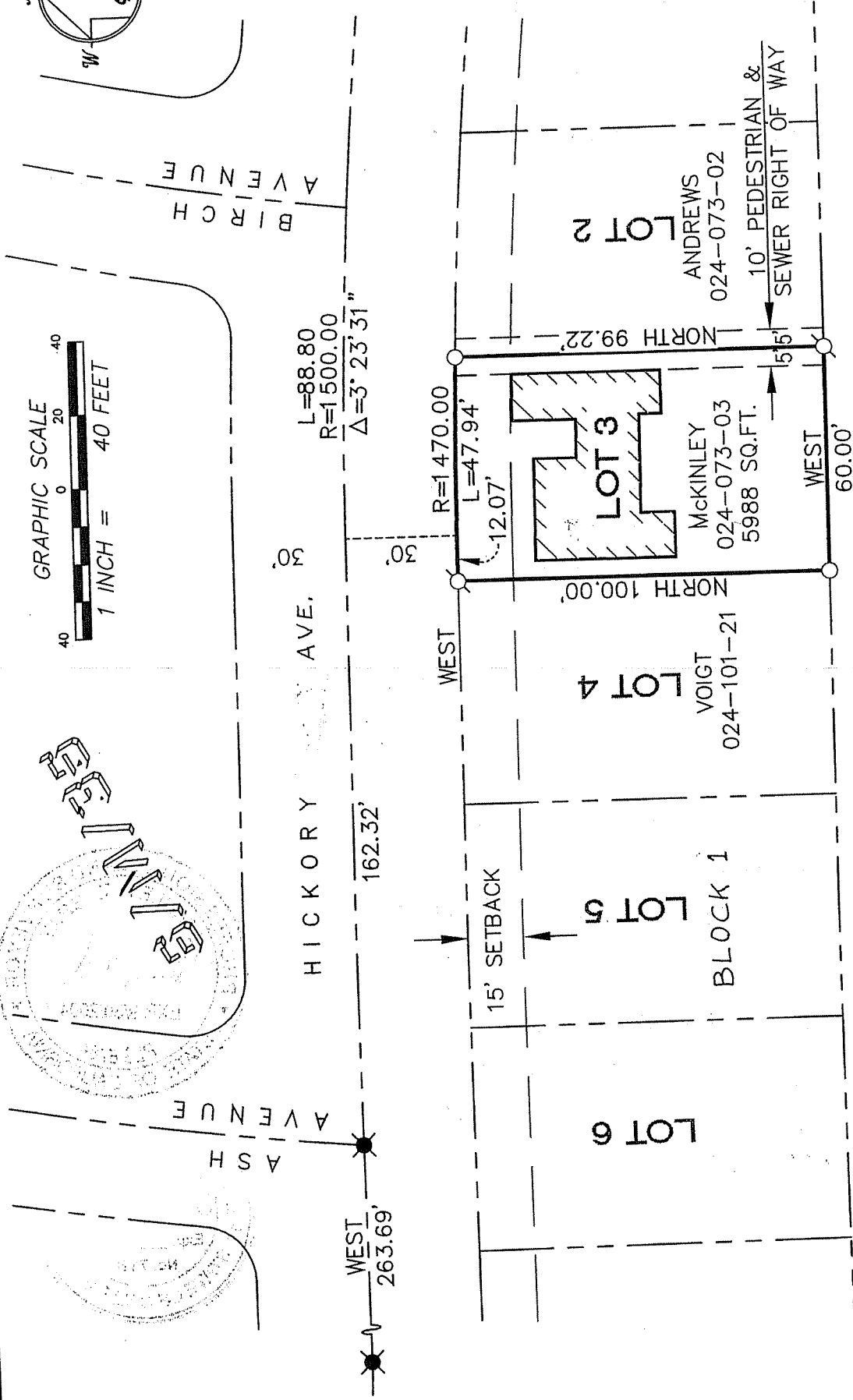
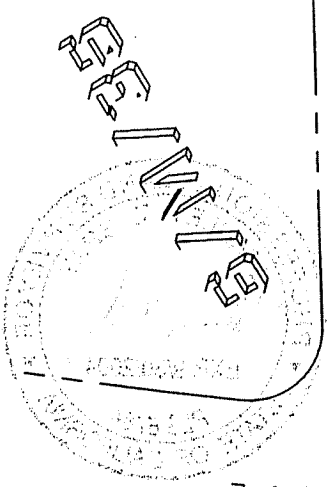
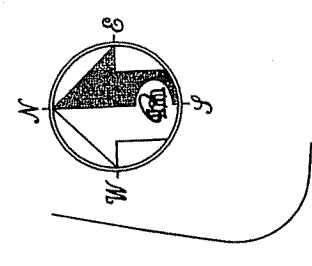
and examined and filed JUNE 21, 2001

Signed _____ P.L.S or R.C.E. No. 7128

Title DEPUTY

County Surveyor's Comment _____





LEGEND

- ✱ FOUND MONUMENT WELL, PER [A]
 - SET BRASS NAIL & TAG, PLS 6784
 - ⊗ SET 5/8" REBAR WITH CAP, PLS 6784
- NOTE
RECORD=MEASURED

REFERENCE
 "MAP OF SUBDIVISION NO.1 MADERA GARDENS..." FILED FOR RECORD 7 AUGUST 1947 IN VOLUME 6 OF MAPS, AT PAGE 1, OFFICIAL RECORDS OF MARIN COUNTY.

CORNER RECORD

MERIDIAN SURVEYING, INC.
 100 DRAKES LANDING RD, #164
 GREENBELT, CA 94123
 (415) 440-4131 info@meridiansurveying.com