

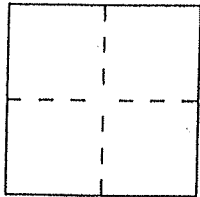
CORNER RECORD

Document Number 024-064-01

City of Corte Madera

County of Marin, California

Brief Legal Description Lot 10 of 6 RM 35



CORNER TYPE

- Government Corner
- Meander
- Rancho
- Date of Survey \_\_\_\_\_
- Control
- Property
- Other

COORDINATES (Optional)

N. \_\_\_\_\_  
 E. \_\_\_\_\_  
 Zone \_\_\_\_\_ Datum \_\_\_\_\_  
 Elev. \_\_\_\_\_

Corner — Left as found  Found and tagged  Established  Reestablished  Rebuilt

Identification and type of corner found: Evidence used to identify or procedure used to establish or reestablish the corner:

Found Standard Street Monuments per 6 RM 35

A description of the physical condition of the monument as found and as set or reset:

Set Hub & Tag LS 5290 for corner, and set 1/2 rebar & cap embossed LS 5290 for line pt.

SURVEYOR'S STATEMENT

This Corner Record was prepared by me or under my direction in conformance with the Land Surveyors' Act on 8/15/12

Signed David Harp L.S. or R.C.E. Number LS 5290

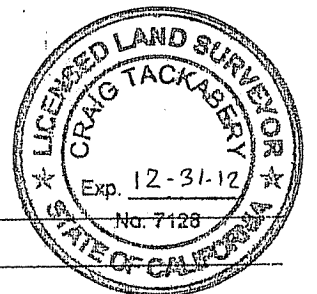


COUNTY SURVEYOR'S STATEMENT

This Corner Record was received AUGUST 16, 2012 and examined

and filed SEPTEMBER 12, 2012

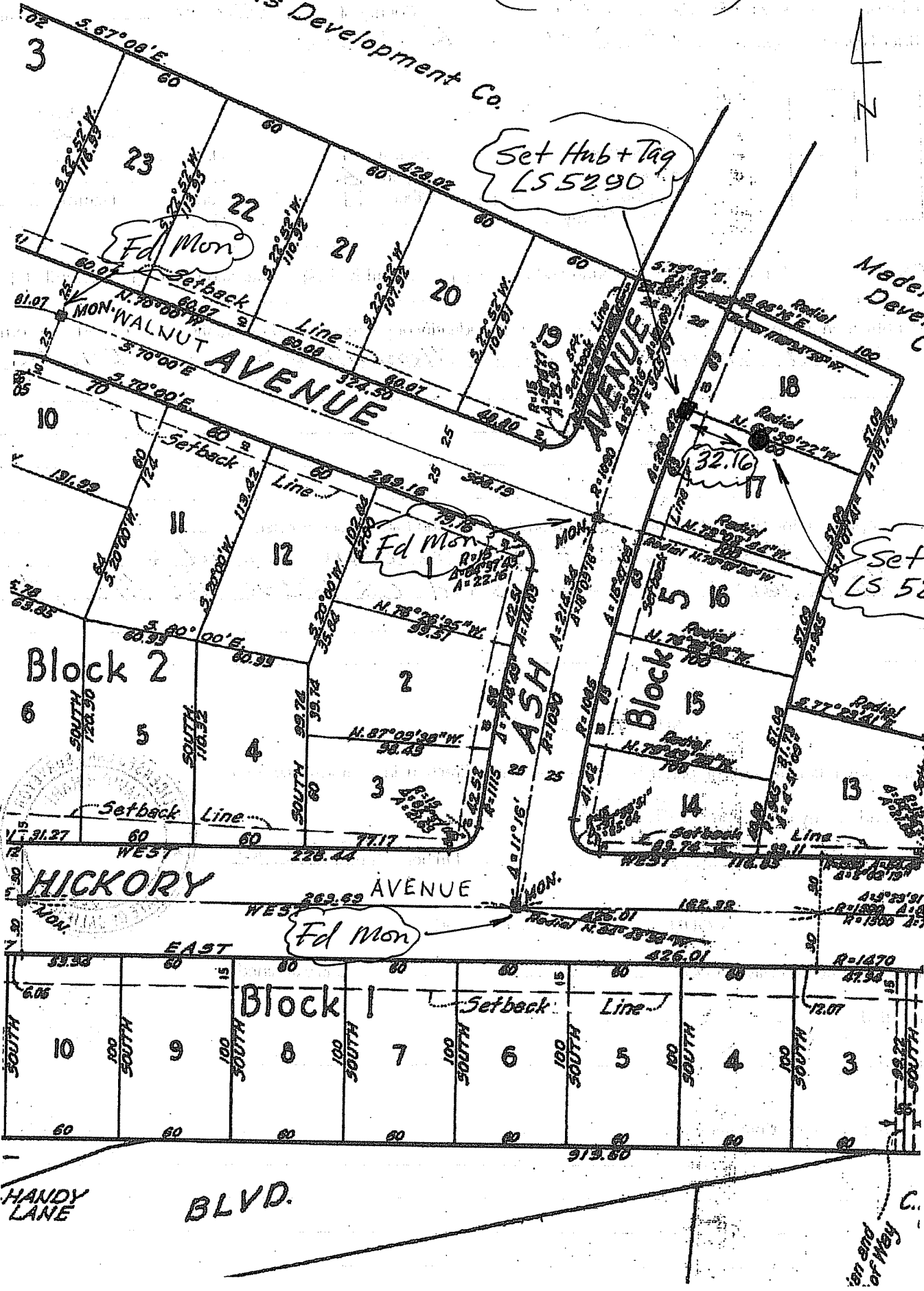
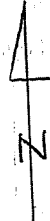
Signed [Signature] Title COUNTY SURVEYOR



County Surveyor's Comment \_\_\_\_\_

Madera Gardens Development Co.

(6 RM 35)



Set Hub + Tag  
LS 5290

F.d Mon.

F.d Mon.

set bar  
LS 5290

HICKORY AVENUE

ASH AVENUE

BLVD.

HANDY LANE

ion end  
of Hwy C.