

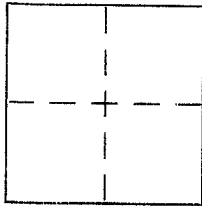
CORNER RECORD

Document Number 24-062-53

City of LARKSPUR

County of MARIN, California

Brief Legal Description Parcel 3 as depicted upon 5 05 24



CORNER TYPE

Government Corner  Control   
Meander  Property   
Rancho  Other   
Date of Survey 11/08 & 11/12 2004

COORDINATES (Optional)

N. \_\_\_\_\_  
E. \_\_\_\_\_  
Zone \_\_\_\_\_ NAD27  NAD83   
NAD83 Epoch \_\_\_\_\_  
Elev. \_\_\_\_\_  
Vert. Datum: NGVD29  NAVD88   
Meas. Units: Metric  Imperial

Corner - Left as found  Found and tagged  Established  Reestablished  Rebuilt

Identification and type of corner found: Evidence used to identify or procedure used to establish or reestablish the corner:

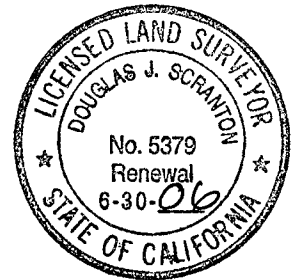
Reestablish a portion of the Easterly line of Parcel 3 as depicted upon 5 05 24. Line reestablished from original points in Elm Avenue shown upon SAID 5 05 24. Refer to Plat on reverse side for details

A description of the physical condition of the monument as found and as set or reset:

set 1/2" rebar with pls cap 5379 affixed to top of rebar & driven flush with surrounding grade

SURVEYOR'S STATEMENT

This Corner Record was prepared by me or under my direction in conformance with the Land Surveyor's Act on December 1 2004  
Signed Douglas J. Scranton P.L.S or R.C.E. No. PLS 5379



COUNTY SURVEYOR'S STATEMENT

This Corner Record was received DECEMBER 14, 2004  
and examined and filed JANUARY 18, 2005  
Signed [Signature] P.L.S or R.C.E. No. 7128  
Title COUNTY SURVEYOR

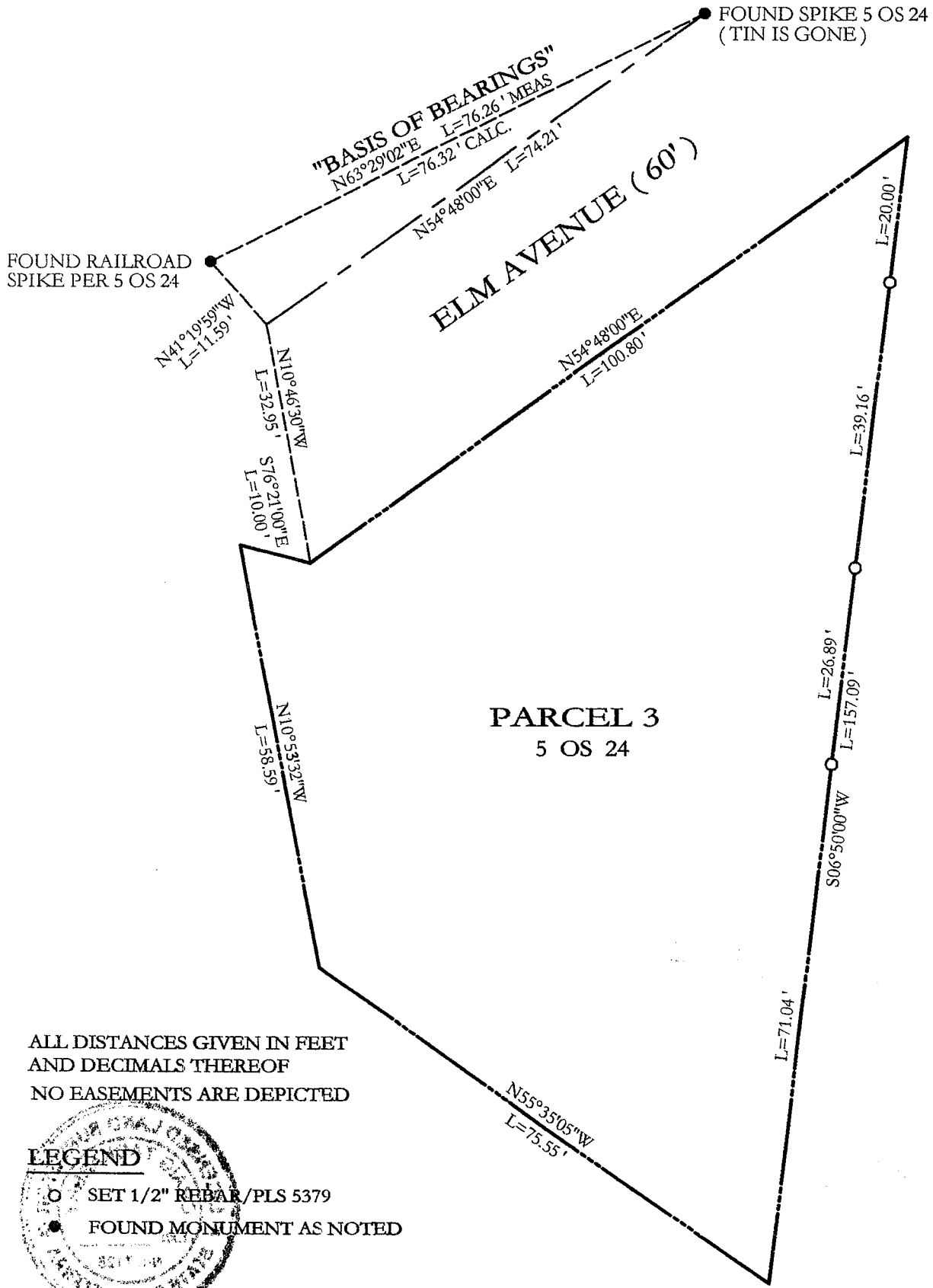


County Surveyor's Comment \_\_\_\_\_

Prepared by DS SCRANTON SURVEYING NCA/STO CA

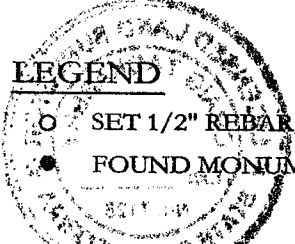


SCALE: 1"=20'



ALL DISTANCES GIVEN IN FEET  
 AND DECIMALS THEREOF  
 NO EASEMENTS ARE DEPICTED

**LEGEND**



- SET 1/2" REBAR / PLS 5379
- FOUND MONUMENT AS NOTED

**BASIS OF BEARINGS**

TAKEN AS N63°29'02"E BETWEEN FOUND  
 POINTS OF 5 OS 24 AS SHOWN ON ELM AVENUE