

L. A. Stevens & Associates, Inc.  
Professional Land Surveyors  
Novato, California

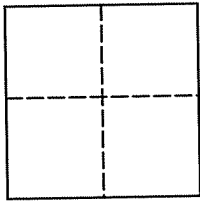
**Lands of Oh**  
**Job #: 12-1377**

**CORNER RECORD**

Document Number 024-062-24

Town of Corte Madera, County of Marin, California

Brief Legal Description: Being Lot 15 as shown on that certain map entitled "Map of Madera Gardens Subdivision No. 8", filed in Book 8 of Maps at Page 92, Marin County Records.



**CORNER TYPE**

Government Corner  Control   
Meander  Property   
Rancho  Other   
Date of Survey: February 9, 2012

**COORDINATES (Optional)**

N \_\_\_\_\_  
E \_\_\_\_\_  
Zone \_\_\_\_\_ NAD27  NAD83   
NAD 83 Epoch \_\_\_\_\_  
Elev. \_\_\_\_\_  
Vert. Datum: NGVD29  NAVD88   
Meas. Units: Metric  Imperial

**Corner -** Left as found  Found and tagged  Established  Reestablished  Rebuilt

Identification and type of corner found: Evidence used to identify or procedure used to establish or reestablish the corner:  
See Page 2 of 2

A description of the physical condition of the monument as found and as set or reset:  
See Page 2 of 2

**SURVEYOR'S STATEMENT**

This Corner Record was prepared by me or under my direction in conformance with  
The Land Surveyor's Act on July 6, 2012.

Signed [Signature] P.L.S 6649



**COUNTY SURVEYOR'S STATEMENT**

This Corner Record was received JULY 10, 2012

and examined and filed JULY 12, 2012

Signed [Signature] P.L.S. or R.C.E. No. 7128

Title COUNTY SURVEYOR

**County Surveyors' Comment** IT IS MY OPINION THAT THE FILING OF THIS CORNER RECORD DOES NOT COMPLY WITH BUSINESS AND PROFESSIONAL CODE 8773.2 (a) AND 8765 (a), BECAUSE THE DIMENSIONS MEASURED FOR THE LOT LINES OF LOT 15 FILED IN BOOK 8 OF MAPS PAGE 92, DIFFER FROM THOSE SHOWN ON THE RECORDED MAP

All distances shown are in feet and decimals thereof

# LEGEND

- ★ Found 1/2" Rebar, With Illegible & Broken Plastic Plug, Set Plastic Plug, Stamped "L.A. Stevens, LS 6649", No Filed Record
- Found 3/4" Iron Pipe & Wood Plug, With Nail & Tag, Stamped "RE 5948", In Hand Hole, ( )R1, U.N.O.
- Set 2 x 2 Hub & Tack
- Set 3/4" Iron Pipe & Plastic Plug, Stamped "L.A. Stevens, LS 6649"

U.N.O. Unless Noted Otherwise

— Wood Picket Fence

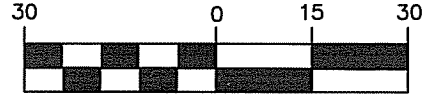
SNF Searched For, Not Found

R1 6 RM 35

R2 8 RM 92

R3 Corte Madera Municipal Code

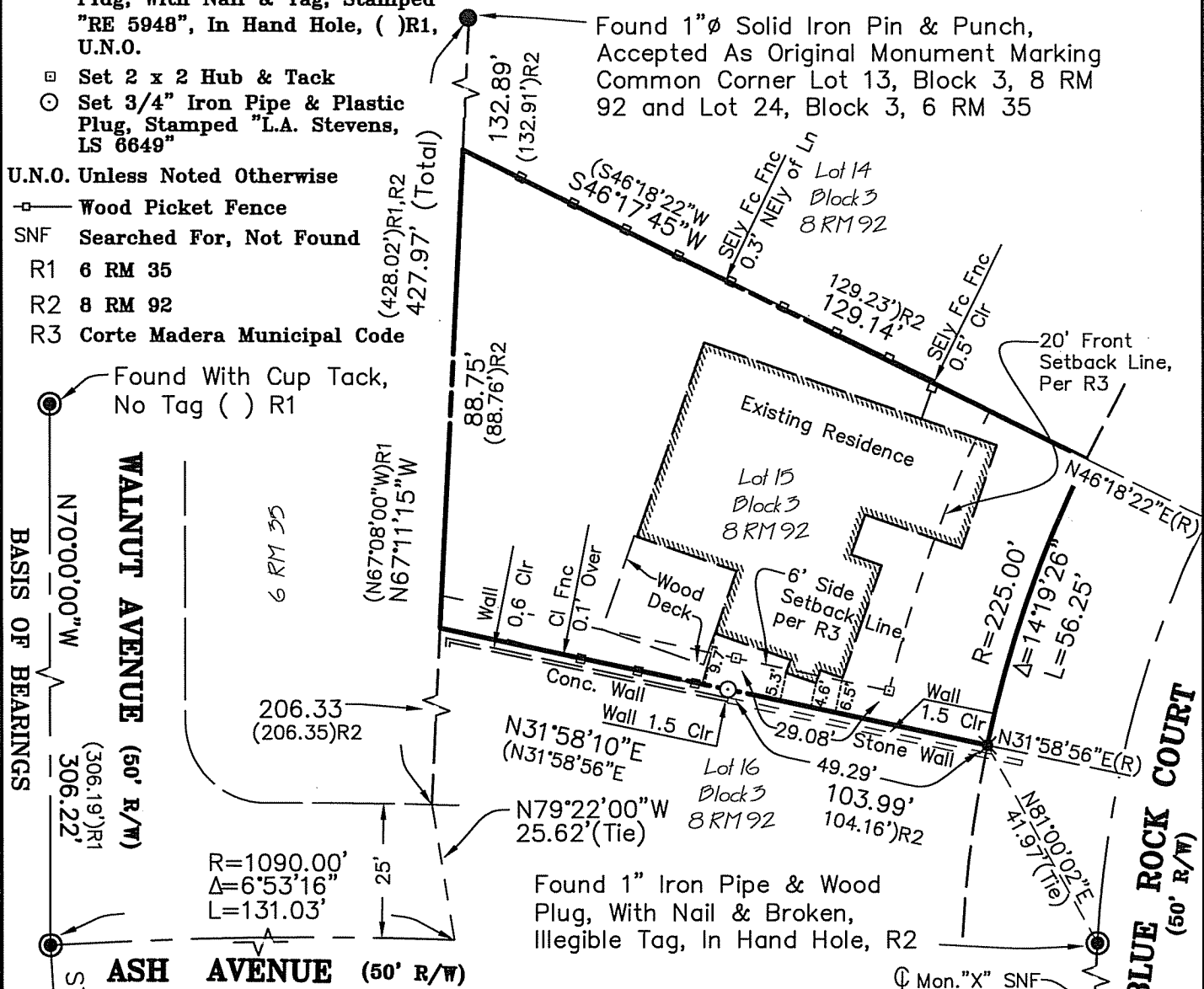
# GRAPHIC SCALE



IN FEET



Found 1"∅ Solid Iron Pin & Punch, Accepted As Original Monument Marking Common Corner Lot 13, Block 3, 8 RM 92 and Lot 24, Block 3, 6 RM 35



BASIS OF BEARINGS

WALNUT AVENUE (60' R/W)

ASH AVENUE (50' R/W)

BLUE ROCK COURT (50' R/W)

**SURVEYOR'S NOTE:** It is my opinion that the slight variations between record and measured dimensions shown hereon are non-material and do not trigger the requirement of the filing of a record of survey. These variations are normally found between surveys using modern and pre-modern techniques and instruments, and are shown to aid future retracement efforts.



## Corner Record Lands of Oh

(Lot 15, 8 RM 92)  
 Corte Madera Marin County California  
 Scale: 1" = 30' July 6, 2012  
**L.A. Stevens & Associates, Inc.**

Professional Land Surveyors • (415) 382-7713  
 7 Commercial Blvd., Suite 1 • Novato, CA 94949

Job # 12-1377

Page 2 Of 2

Lawrence A. Stevens, PLS 6649

Copyright © Lawrence A. Stevens 2012

P:\LAS\_Inc-Jobs\121377-Oh\dwg\121377fid.dwg, 8/28/2012 7:49:45 AM