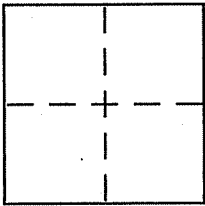


CORNER RECORD

City of Town of Corte Madera

A.P. Number 024-041-14
County of Marin, California

Brief Legal Description Lot 2, 10 Maps 52



CORNER TYPE

Government Corner Control
Meander Property
Rancho Other
Date of Survey 07-24-08

COORDINATES (Optional)

N. _____
E. _____
Zone _____ NAD27 NAD83
NAD83 Epoch _____
Elev. _____
Vert. Datum: NGVD29 NAVD88
Meas. Units: Metric Imperial

Corner - Left as found Found and tagged Established Reestablished Rebuilt

Identification and type of corner found: Evidence used to identify or procedure used to establish or reestablish the corner:

See page 2 of 2

A description of the physical condition of the monument as found and as set or reset:

See page 2 of 2

SURVEYOR'S STATEMENT

This Corner Record was prepared by me or under my direction in conformance with the Land Surveyor's Act on 7/29 2008

Signed [Signature] P.L.S or R.C.E. No. 6784



COUNTY SURVEYOR'S STATEMENT

This Corner Record was received AUGUST 8, 2008

and examined and filed SEPTEMBER 4, 2008

Signed [Signature] P.L.S or R.C.E. No. 7128

Title COUNTY SURVEYOR



County Surveyor's Comment _____

REFERENCE

"MAP OF FIFER INDUSTRIAL PARK"
 FILED FOR RECORD FEBRUARY 25,
 1960 IN VOLUME 10 OF MAPS, AT
 PAGE 52, MARIN COUNTY RECORDS.

LEGEND

- ⊗ FOUND MONUMENT PER IO RM 52
- ⊚ SET 5/8" REBAR WITH CAP, PLS 6784
- SET LEAD PLUG & TACK WITH BRASS TAG, PLS 6784

LUCKY DRIVE (60' WIDE)

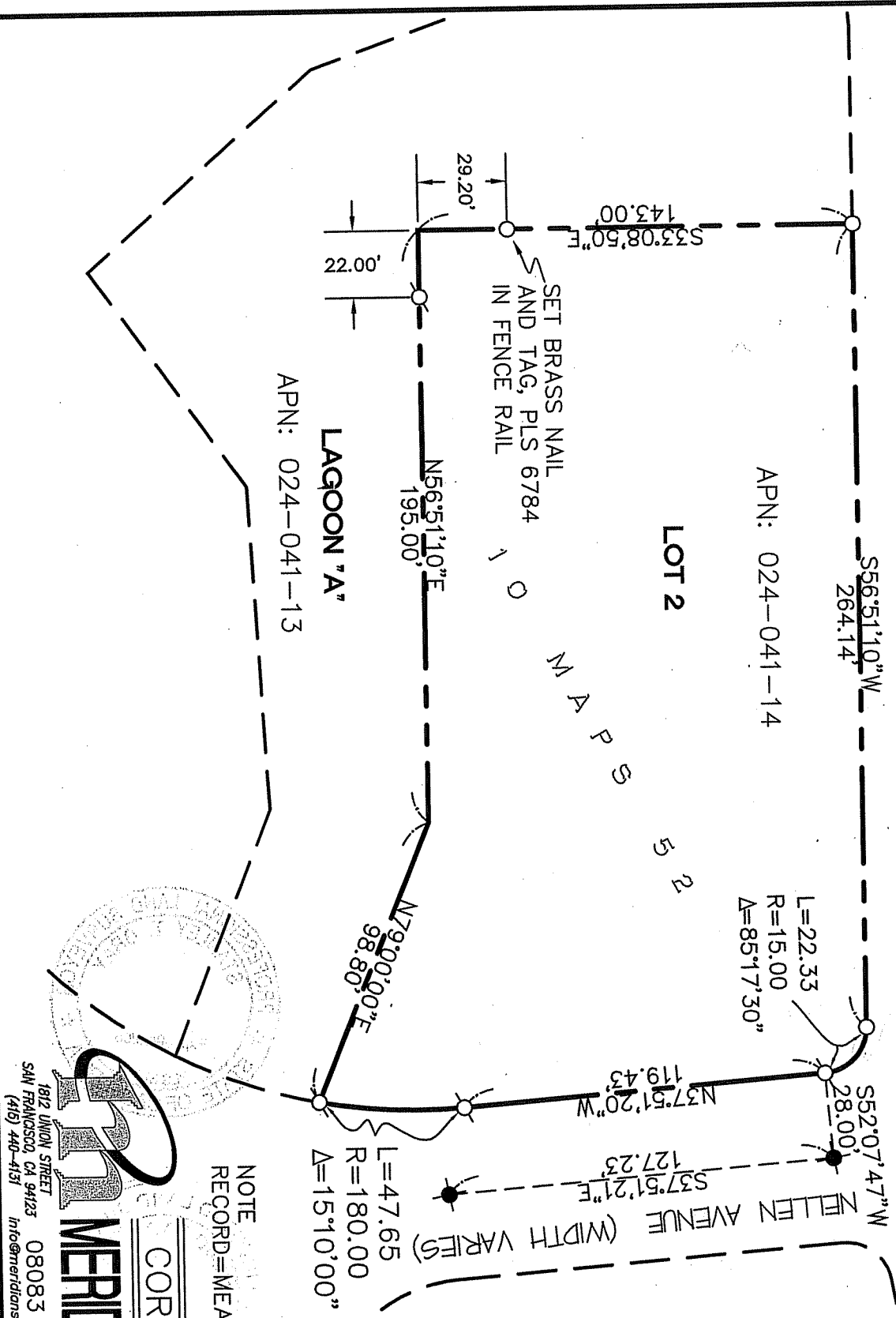
APN: 024-041-14

LOT 2

APN: 024-041-13

LAGOON "A"

SET BRASS NAIL AND TAG, PLS 6784 IN FENCE RAIL



NOTE
 RECORD = MEASURED

CORNER RECORD

MERIDIAN SURVEYING ENGINEERING, INC.

1812 UNION STREET
 SAN FRANCISCO, CA 94123 (415) 440-4131
 777 GRAND AVENUE, SUITE 202
 SAN RAFAEL, CA 94901 (415) 456-6450